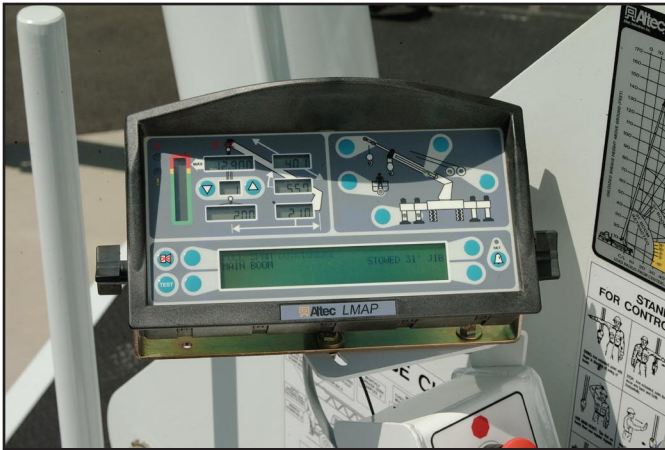


# Altec AC30-103S Hydraulic Telescopic Crane





*Altec LMAP System*

## RECOMMENDED FEATURES

- Wheel Chocks
- Fall Protection System (with Platform)
- Radio Remote Control (with Platform)

## CRANE SPECIFICATIONS

- 60,000 lb (27,215 kg) Maximum Lifting Capacity
- 103 ft (31.4 m) 4-Section Non-Insulated Boom
- 113 ft (34.4 m) Maximum Sheave Height
- Stowed Travel Height of 12.9 ft (3.9 m)
- Vehicle Travel Length of 38 ft (11.6 m)
- Sequential Out-and-Down Outriggers
  - Full Span 24 ft (7.3 m)
  - Mid Span 15.75 ft (4.8 m)
  - Short Span 8.17 ft (2.5 m)
- Hydraulic Pilot-Operated Control System
- Continuous Rotation
- Hydraulic Oil Cooling System
- Life Cycle Tested for Reliability

## MINIMUM CHASSIS REQUIREMENTS

	Rear Tandem	
Gross Vehicle Weight Rating	60,000 lbs	27,215 kg
Front Axle Weight Rating	20,000 lbs	9,072 kg
Rear Axle Rating	40,000 lbs	18,145 kg
Cab-To-Axle	192 in	4877 mm
Wheel Base	262 in	6655 mm

Note: Crane with specific options may require pusher axle to comply with highway regulations.

## STANDARD SAFETY FEATURES

- Altec LMAP (Load Moment & Area Protection) System
  - Rated Capacity Limiter
  - Displays: Boom Length, Boom Angle, Load on Hook, Percent of Rated Capacity
  - Electronic Working Area Definition
  - Operator Defined Audible Alarm Set-Points for Boom Angle, Length and Rotational Position
- Outrigger Boom Interlock System
- Outrigger Motion Alarm
- Back-Up Alarm
- Emergency Stop at Operator Controls
- Anti-Two Block Device
- Front Bumper Outrigger
- Altec Opti-View® Riding Seat Control Station
- Winch Drum Rotation Indicator

## OPTIONS

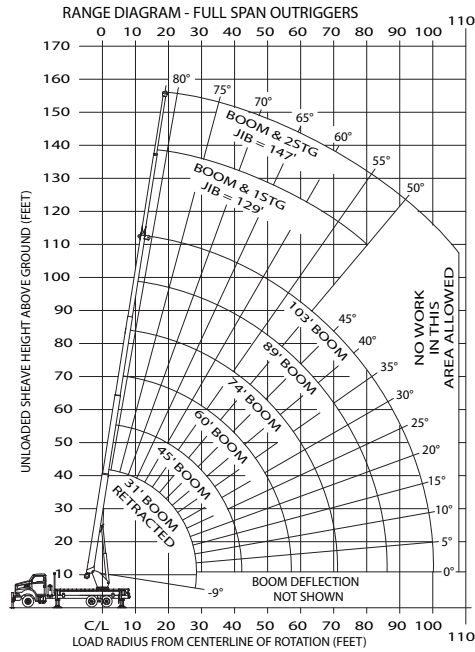
- 2-Piece 44 ft (13.4 m) Jib, 26 ft (7.9 m) Retracted
- 2-Man Steel Platform
- Climate-Controlled Enclosed Cab
- Load Blocks for Multiple Parts of Line
- Hydraulic Tool Circuit at Tail Shelf
- Pintle Hitch
- Winch Control at Load Hook Stow Point
- Utility Tool Boxes
- Rotation Resistant Wire Rope
- Glide Swing



# Altec AC30-103S Capacities



## MODEL AC30-103S EXAMPLE CAPACITIES



BOOM LOAD CAPACITIES (LBS) WITH FULL SPAN OUTRIGGERS (24 FT)

LOAD RADIUS (FT)	31 FT BOOM		45 FT BOOM		60 FT BOOM		74 FT BOOM		89 FT BOOM		103 FT BOOM	
	LBS	Capacity	LBS	Capacity	LBS	Capacity	LBS	Capacity	LBS	Capacity	LBS	Capacity
5	77	60000										
8	71	45000	77	28300								
10	67	40000	75	28300								
12	63	34500	72	28200	77	27500						
14	59	31000	69	28000	75	26800	79	24000				
16	54	27700	67	27500	73	25200	77	22000				
18	49	25200	64	25200	71	23700	75	20400	78	17200		
20	44	22400	61	22400	69	21300	74	18000	77	15800		
25	27	15000	53	16800	64	17000	70	15700	74	13100	77	12150
30			45	12700	58	13050	65	13000	70	11100	74	10550
35			34	10000	52	10250	61	10300	67	9800	71	9150
40			19	7800	46	8250	56	8500	63	8500	68	7850
45					39	6800	51	6950	59	7000	65	6750
50					30	5500	46	5800	56	5800	61	5750
55					17	4500	40	4975	51	5200	58	4700
60							33	4000	47	4300	55	3900
65							25	3550	42	3600	51	3300
70							11	2700	37	3000	47	2725
75									31	2300	43	2250
80									23	1700	38	1820
85									11	1300	33	1325
90											27	1100
95											20	800
0	8500	0	6500	0	3700	0	2500	0	1200	0	500	
	900		650		500		400		350		300	

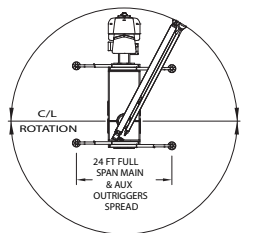
JIB LOAD CAPACITIES (LBS) FOR ALL BOOM LENGTHS. JIB CAPACITIES ARE FOR FULL SPAN OUTRIGGERS (24 FT)

TELESCOPING JIB	LOADED BOOM ANGLE						
	50°	55°	60°	65°	70°	75°	80°
RETRACTED 26 FT JIB	800	1400	2300	3300	4000	5300	6450
EXTENDED 44 FT JIB	700	1050	1700	2300	3000	3500	3500

\* DO NOT OPERATE JIBS BELOW THIS ANGLE UNLESS BOOM IS FULLY RETRACTED.

AREA OF OPERATION

360° CAPACITY WORKING AREA WITH FULL SPAN AND FRONT BUMPER OUTRIGGERS



DEDUCTIONS FROM RATED LOADS FOR HANDLING DEVICES

- OVERHAUL BALL: 180 LBS
- 1-SHEAVE LOADBLOCK: 230 LBS
- 2-SHEAVE LOADBLOCK: 365 LBS
- 3-SHEAVE LOADBLOCK: 450 LBS

0° BOOM CAPACITIES  
STOWED JIB LOAD DEDUCTIONS

OPERATOR AIDS MUST BE IN GOOD OPERATING CONDITION BEFORE OPERATING CRANE. REFER TO OWNERS MANUAL.  KEEP AT LEAST 3 WRAPS OF LOADLINE ON DRUM AT ALL TIMES.  USE ONLY 9/16" DIAMETER IWRC OR ROTATION RESISTANT WIRE ROPE WITH 37,000 LBS. MIN. BREAKING STRENGTH ON THIS MACHINE.		1 PART LOAD LINE	2 PART LOAD LINE	3 PART LOAD LINE	4 PART LOAD LINE	5 PART LOAD LINE	6 PART LOAD LINE
		LOADS UP TO	LOADS UP TO	LOADS UP TO	LOADS UP TO	LOADS UP TO	LOADS UP TO
IWRC XXIP WIRE ROPE		10,571 LBS.	21,142 LBS.	31,713 LBS.	42,284 LBS.	52,855 LBS.	60,000 LBS.
ROTATION RESISTANT WIRE ROPE		7,400 LBS.	14,800 LBS.	22,200 LBS.	29,600 LBS.	37,000 LBS.	44,400 LBS.
MAXIMUM BOOM LENGTH AT MAXIMUM ELEVATION WITH RIGGING SHOWN TO REACH THE GROUND		103 FT + 44 FT JIB	103 FT BOOM	74 FT BOOM	56 FT BOOM	45 FT BOOM	37 FT BOOM
WINCH		LIFTS AND SPEEDS					
9/16" DIAMETER IWRC XXIP CABLE SUPPLIED	STANDARD PLANETARY WINCH HIGH SPEED	4,620 LBS. 249 FT/MIN	9,240 LBS. 124 FT/MIN	13,860 LBS. 83 FT/MIN	18,480 LBS. 62 FT/MIN	23,100 LBS. 50 FT/MIN	27,720 LBS. 42 FT/MIN
	STANDARD PLANETARY WINCH LOW SPEED	9,880 LBS. 115 FT/MIN	19,760 LBS. 58 FT/MIN	29,640 LBS. 38 FT/MIN	39,520 LBS. 29 FT/MIN	49,400 LBS. 23 FT/MIN	59,280 LBS. 19 FT/MIN
ALL WINCH PULLS AND SPEEDS IN THIS CHART ARE SHOWN ON THE 3RD LAYER. WINCH LINE PULLS WOULD INCREASE ON THE FIRST AND SECOND LAYERS. WINCH LINE SPEED WOULD DECREASE ON THE FIRST AND SECOND LAYERS. WINCH LINE PULLS MAY BE LIMITED BY THE WINCH CAPACITY OF 8,390 LBS FULL DRUM OR ANSI CABLE SAFETY LIMITS SHOWN IN CHART FOR IWRC XXIP AND ROTATION RESISTANT WIRE ROPES.							

CAUTION:

- Load ratings shown are maximum allowable loads with the crane mounted on an Altec-approved chassis.
- Loaded boom angles at specified boom lengths give only an approximation of the operating radius. The boom angle before loading should be greater to account for deflections. Do not exceed the operating radius for rated loads.
- When between listed lengths for radii always use the smallest of values shown. Capacities for the 31-foot boom length must only be lifted with boom fully retracted.
- Load ratings are based on freely suspended loads with the crane properly set up on outriggers, with the machine leveled and standing on firm uniform supporting surface.
- Actual working capacities depend on supporting surfaces, wind and other factors affecting stability such as hazardous surroundings, experience of personnel, and proper handling.
- Weights of load block, stowed jib, or other accessories must be deducted from the rated capacities shown.

Altec Cranes are supported by service centers and over 115 mobile service technicians positioned across North America, seven days a week, 24 hours a day.

**United States:**

Alabama Service Center  
 1730 Vanderbilt Road  
 Birmingham, AL 35234

Arizona Service Center  
 2420 South 16th Avenue  
 Phoenix, AZ 85007

California Service Center (Northern)  
 325 Industrial Way  
 Dixon, CA 95620

California Service Center (Southern)  
 2882 Pomona Boulevard  
 Pomona, CA 91766

Colorado Service Center  
 641 Telluride Street  
 Aurora, CO 80011

Florida Service Center  
 2570 Old Okeechobee Road  
 West Palm Beach, FL 33409

Georgia Service Center  
 287 First Street  
 Forest Park, GA 30297

Indiana Service Center  
 5201 West 84th Street  
 Indianapolis, IN 46268

Kentucky Service Center  
 200 Altec Drive  
 Elizabethtown, KY 42701

Maryland Service Center  
 1434 Hughes Ford Road  
 Frederick, MD 21701

Massachusetts Service Center  
 28 Wales Street  
 Millbury, MA 01527

Missouri Service Center  
 2106 S. Riverside Road  
 St. Joseph, MO 64507

North Carolina Service Center  
 1550 Aerial Avenue  
 Creedmoor, NC 27522

Ohio Service Center  
 1236 Township Road 1175  
 Ashland, OH 44805

Oregon Service Center  
 13817 NE Sandy Boulevard  
 Portland, OR 97230

Pennsylvania Service Center  
 250 Laird Street  
 Plains, PA 18705

Texas Service Center  
 1001 Solon Road  
 Waxahachie, TX 75156

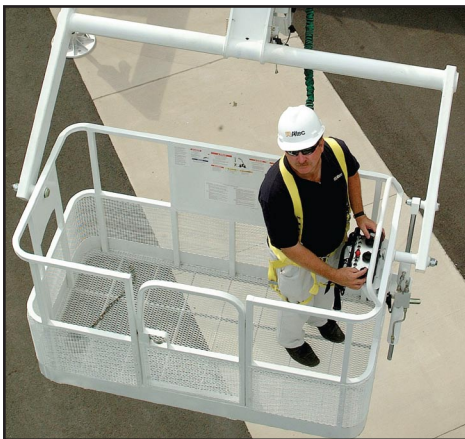
Virginia Service Center  
 325 South Center Drive  
 Daleville, VA 24083

**Canada:**

British Columbia Service Center  
 12352 84th Avenue  
 Surrey, BC V3W 0J5

Manitoba Service Center  
 57 Durand Road  
 Winnipeg, Manitoba R2J 3T1

Ontario Service Center  
 831 Nipissing Road  
 Milton, Ontario L9T 4Z4



*Optional 2-Man Platform*



*Optional Climate Controlled Enclosed Cab*

**Altec Industries, Inc.**

325 South Center Drive  
 Daleville, VA 24083  
 1-540-992-5300



Manufacturing and Service Facilities Located  
 Throughout the United States and Canada  
[www.altec.com](http://www.altec.com)