

emission
free

ZAGRO E-MAXI

Battery-driven railcar mover





Limit your emissions Profit from efficiency

Emission-free operation in any work zones thanks to electric drive and patented rail guidance equipment.

Use the ZAGRO *E-MAXI* to perform your shunting work in railway operations, public transportation and industrial services on open and level-even track sites. The railcar mover has been designed for combined operation both indoors and outdoors. It stands for emission-free operation on rails.

The new development of this battery-driven road/rail vehicle is based on the long-standing experience by the manufacturer ZAGRO. The hauler with four electric motors including stepless control for the individually driven wheels and the patented rail guidance equipment sets new standards in shunting technology.

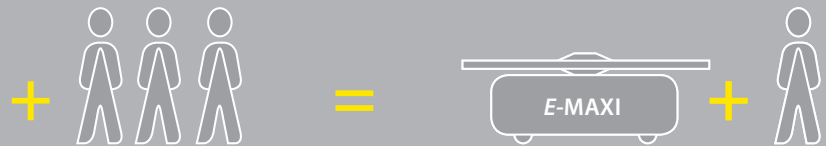
Economic thinking

Cost-saving shunting

Well-priced manufacture using components from series production, with low wear and low maintenance. Economic shunting work in one-man operation with radio remote control.

- High quality at low initial cost
- Optimum traction by anti-lock brake and anti-skid systems
- Minimal wear of drive wheels
- One-man operation with radio remote control
- Processor controlled all-wheel drive with four electric motors

Locomotive or railcar



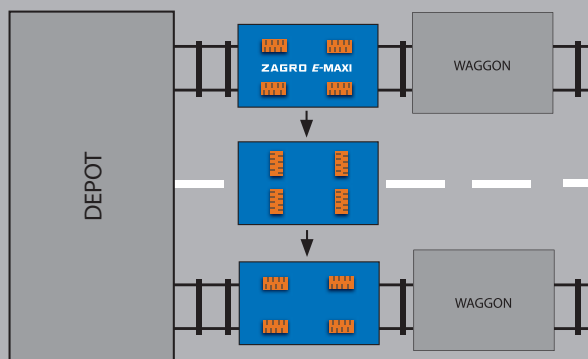
Consistently ecological

Maximum environmental

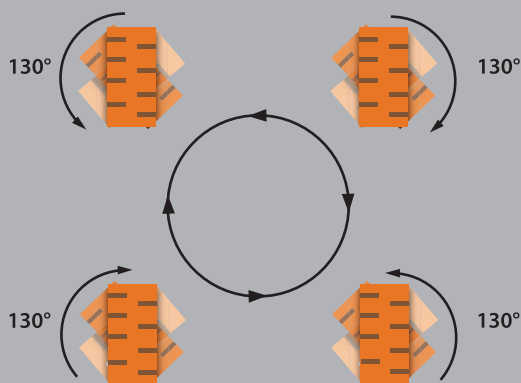
Environment-friendly manufacture and operation.
Easy handling, compact, speedy and versatile.

Its rechargeable high-performance batteries ensure emission-free and silent operation. Recyclable materials guarantee best environmental compatibility.

Its variety of coupling systems and special equipment for specific needs makes the small and agile power package a novelty in road/rail technology. Its radio remote control facilitates efficient one-man operation and creates best conditions for both ecological and economic shunting performance.



High manoeuvrability thanks to patented all-wheel steering



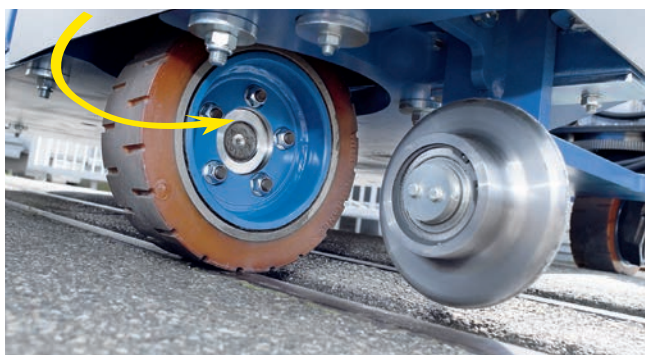
Turning on the spot with low tyre wear

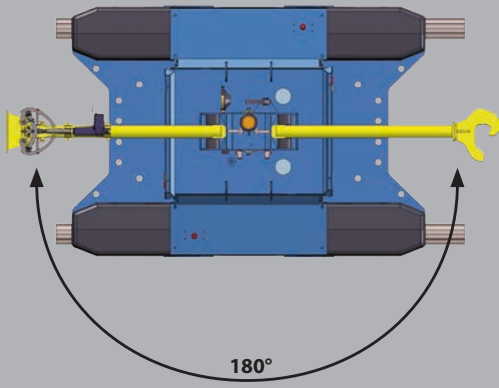
In narrow work zones Quickly change the track

Maneuvering and turning in narrow work zones. The all-wheel steering system enables you to maneuver the ZAGRO E-MAXI with low tyre wear in any direction.

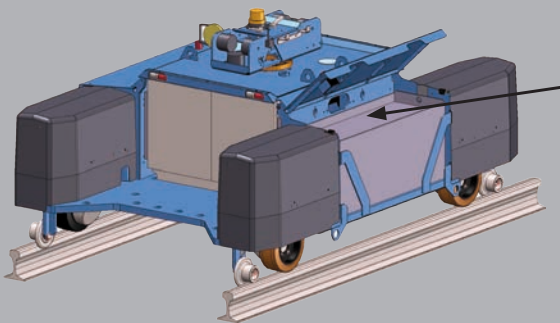
The rail guidance equipment installed in front of every drive wheel is hydraulically lifted and lowered at the push of a button. Simply swivel the four running wheels by max. 130° using the joystick at the manual or radio remote control unit.

The abrasion of the guide wheels – made of rubber or, as an option, Vulkollan – is reduced to a minimum even when turning on the spot.





Variable coupling thanks to
twin-type coupling-bar receiver



Easy handling of
batteries

Easy steering Speedy manoeuvring

Radio remote control unit for wider cruising radius.

The ZAGRO E-MAXI is available with radio remote control. Its proportionally controlled joysticks for drive speed and steering are very user-friendly.

The radio remote control unit is equipped with a shoulder strap for comfortable carrying. Its range is 400 m and its radio frequency is freely selectable.

- Rail guidance equipment up / down
- Forward drive / reverse drive
- Proportional steering
- Circular driving / parallel driving
- Speed slow / fast (stepless)
- Signal horn
- Operation of coupling bar
- Emergency stop



Versatile use Easy operation

Railway operations, public transportation services and industry – the ZAGRO E-MAXI is highly versatile.

For railway operations, public transportation services, subways or metro – the ZAGRO E-MAXI will be your indispensable partner wherever you maneuver railcars.

Thanks to its agility and quick and accurate hauling operation, the ZAGRO railcar mover is suitable for use and precise positioning in washing plants, on underfloor wheel lathes and in filling plants. Safe and comfortable operation via radio remote control enables to move trailing loads in one-man operation mode in a quick but relaxed manner. The ZAGRO E-MAXI S-XXL will offer the perfect solution for your task.



Comfortable operation Efficient in use

**Silent operation thanks to encapsulated drive units,
well-arranged and compact.**

The ZAGRO E-MAXI is silent, compact, well-arranged, versatile and easy to handle.

Especially in narrow halls where props and pillars restrict the utilization of big road/rail vehicles. Its guide wheels can be swiveled by max. 130° and make the ZAGRO E-MAXI extraordinarily agile. Smooth circular driving and turning on the spot is extremely easy.



High performance Also with hybrid

A real power dwarf. The ZAGRO E-MAXI provides high traction force at low energy consumption.

Superior traction force is based on the utilization of the friction of rubber/vulkollan on steel.

By decades of experience, specific rubber/sand mixtures have been developed to reach the high traction capacities of the E-MAXI.

For higher tonnage and longer operation times we supply the hybrid variant. During indoor operation, the vehicle is driven by its batteries, during outdoor use, the diesel drive is connected. The hybrid version combines the conventional and emission-free drive systems.



For your application The right solution

Various additional modules are available to use the E-MAXI for much more than just shunting.

A wide range of jobs in depots and service workshops can be done for example by crane, working platform and scissor lift.

Air-conditioned driver cabin, coupling systems and wagon brake systems are available as optional equipment.

E-MAXI S-XXL



Safety package

- Rotating beacon or flashlight
- Emergency stop button on both sides and at the manual or radio remote control unit
- Overload protection during battery charge
- Programmable warning signals
- Spot lights
- Electro-magnetic brakes in all four drive motors
- Display indicating function and state of charge

Advantages at a glance

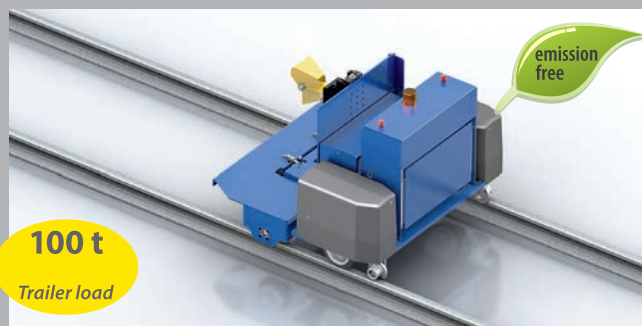
- Emission-free indoor operation
- Turn on the spot by all-wheel steering
- Agile manoeuvrability, moveable in any direction
- High traction performance by utilization of full weight on drive wheels
- Well-priced manufacture thanks to components from series production
- Wear-resistant operational brake
- Twin-type coupling-bar receiver
- Easy handling of batteries

E-MINI



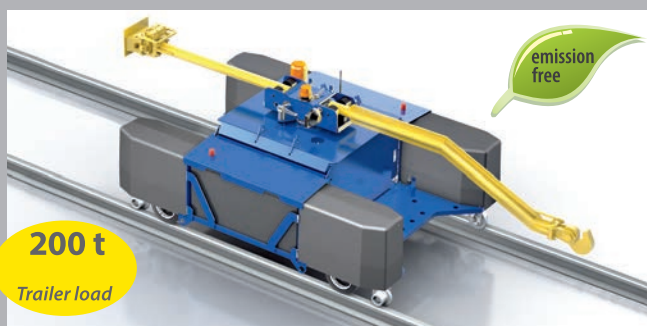
-
-
- Wheel diameters from 840 mm bis 920 mm
- Dimensions approx. L 1300 mm, W 1060 mm, H 1110 mm

E-MAXI S



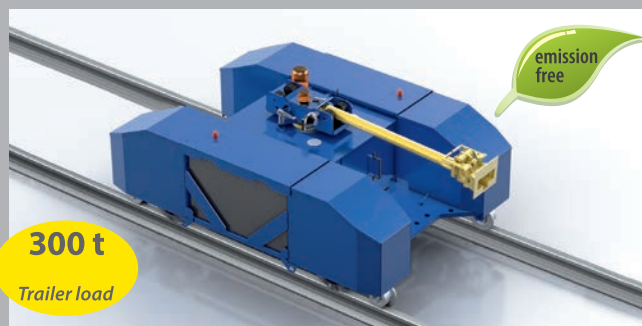
-
-
- Track gauge 1435 mm
- Dimensions approx. L 1700 mm, W 1860 mm, H 1200 mm

E-MAXI M



-
-
- Track gauge from 760 mm bis 1676 mm
- Dimensions approx. L 2900 mm, W 1840 mm, H 700 mm to 1200 mm

E-MAXI L / KABINE



-
-
- Track gauge from 1435 mm bis 1676 mm
- Dimensions approx. L 3000 mm, W 2000 mm, H 1200 mm

E-MAXI XL / KABINE / HYBRID



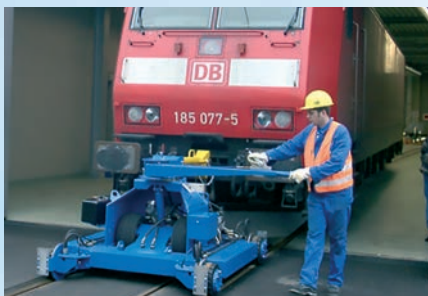
-
-
- Track gauge from 1000 mm bis 1676 mm
- Dimensions approx. L 3760 mm, W 2320 mm, H 1200 mm

E-MAXI XXL / KABINE / HYBRID



-
-
- Track gauge from 1000 mm bis 1676 mm
- Dimensions approx. L 6370 mm, W 2500 mm, H 3210 mm on the road / 2975 mm on rails

Further products – Railway technology



07/16

ZAGRO Bahn- und Baumaschinen GmbH

Mühlstr. 11-15
74906 Bad Rappenau-Grombach
Germany
Telefon +49 7266 9168-0
Telefax +49 7266 9168-25
info@zagro.de
www.zagro.de

