



FOR NEW EQUIPMENT SALES, CALL
800.958.2555
TO SPEAK WITH AN ALTEC REPRESENTATIVE
or visit us online at altec.com

 **Altec**
TELESCOPIC
AERIAL DEVICE

ALB SERIES

FEATURES

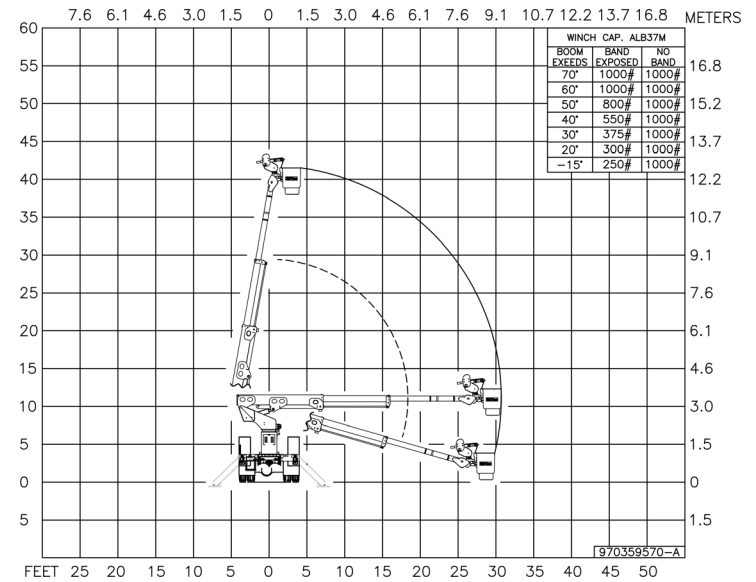
- 3-Stage Hydraulically Sequenced Boom
- Insulated Fiberglass Third Stage
- Altec ISO-Grip® Control System
- Low-Stow Platform for Easy Access from Cargo Bay or Ground
- A-Frame Outriggers
- Hydraulic Platform Leveling
- Full-Pressure, Open-Center Hydraulic System
- Hydraulic Platform Tilt
- Truck Level Indicators
- Insulating, ANSI Category C

OPTIONS

- 10 ft (3.1 m) Elevator on ALB37 Models
- Material Handling System on M-Series Models, Offering Altec Arm Jib
- Rear-Mounted Aerial Installation
- Rail Gear Adaptation
- Jib Adapter
- Phase Lifting Jib Attachments
- Aluminum Platform
- Diagnostic Pressure Test Kit
- Single or Dual Tool Circuit at Platform

Recommended safety equipment, available through Altec Supply, include a platform liner, fall protection system, wheel chocks and outrigger pads.

REACH DIAGRAM



| CONFIGURATIONS | ALB37P | ALB37PE | ALB37M | ALB37ME | ALB42P | ALB42M | ALB50P | ALB50M |
|-------------------------------|---|---|---|---|---|---|---|---|
| Ground to Bottom of Platform* | 37 ft (11.3 m) | 47 ft (14.3 m) | 37 ft (11.3 m) | 47 ft (14.3 m) | 42 ft (12.8 m) | 42 ft (12.8 m) | 50 ft (15.2 m) | 50 ft (15.2 m) |
| Working Height* | 42 ft (12.8) | 52 ft (15.8 m) | 42 ft (12.8) | 52 ft (15.8 m) | 47 ft (14.3 m) | 47 ft (14.3 m) | 55 ft (16.8 m) | 55 ft (16.8 m) |
| Maximum Side Reach | 30.5 ft (9.3 m) | 30.5 ft (9.3 m) | 30.5 ft (9.3 m) | 30.5 ft (9.3 m) | 35.0 ft (10.7 m) | 35.0 ft (10.7 m) | 43.0 ft (13.1 m) | 43.0 ft (13.1 m) |
| Platform Capacity | 600 lb (272 kg) | 600 lb (272 kg) | 350 lb (159 kg) | 350 lb (159 kg) | 600 lb (272 kg) | 350 lb (159 kg) | 500 lb (227 kg) | 350 lb (159 kg) |
| Platform Dimensions | 24 x 48 x 42 in (610 x 1,219 x 1,067 mm) | 24 x 48 x 42 in (610 x 1,219 x 1,067 mm) | 24 x 30 x 42 in (610 x 762 x 1,067 mm) | 24 x 30 x 42 in (610 x 762 x 1,067 mm) | 24 x 48 x 42 in (610 x 1,219 x 1,067 mm) | 24 x 30 x 42 in (610 x 762 x 1,067 mm) | 24 x 48 x 42 in (610 x 1,219 x 1,067 mm) | 24 x 30 x 42 in (610 x 762 x 1,067 mm) |
| Jib Capacity | N/A | N/A | 1,000 lb (454 kg) | 1,000 lb (454 kg) | N/A | 800 lb (363 kg) | N/A | 700 lb (318 kg) |
| Boom Articulation | -16 to 80° | -16 to 80° | -16 to 80° | -16 to 80° | -16 to 80° | -16 to 80° | -16 to 80° | -16 to 80° |
| Rotation | Continuous | Continuous | Continuous | Continuous | Continuous | Continuous | Continuous | Continuous |

*Based on a 40 in (1016 mm) chassis frame height.

General Specifications Key:

The Letter 'E' in the Model Name Indicates the Elevator Configuration.
 The Letter 'M' in the Model Name Indicates the Material Handling Configuration.
 The Letter 'P' in the Model Name Indicates the Personnel Configuration.

MATERIAL HANDLING SYSTEMS WITH UP TO 1,000 LB OF JIB CAPACITY



10 FT ELEVATOR ALLOWS OPERATOR TO TELESCOPE OVER OBSTACLES IN CONGESTED AREAS



3-STAGE TELESCOPIC BOOM PROVIDES LESS TRAFFIC INTRUSION



UNIQUE RAIL GEAR AVAILABLE



For more complete information on Altec products and services, visit us on the web at www.altec.com. Material and specifications are subject to change without notice. Featured units in photos may include optional features. Please contact an Altec representative for all available options. Altec® and the Altec logo are registered trademarks of Altec Inc. in the United States and various other countries and may not be used without permission.
 © 2015 Altec Inc. All Rights Reserved. AIOSALBSERIES-0315-v1