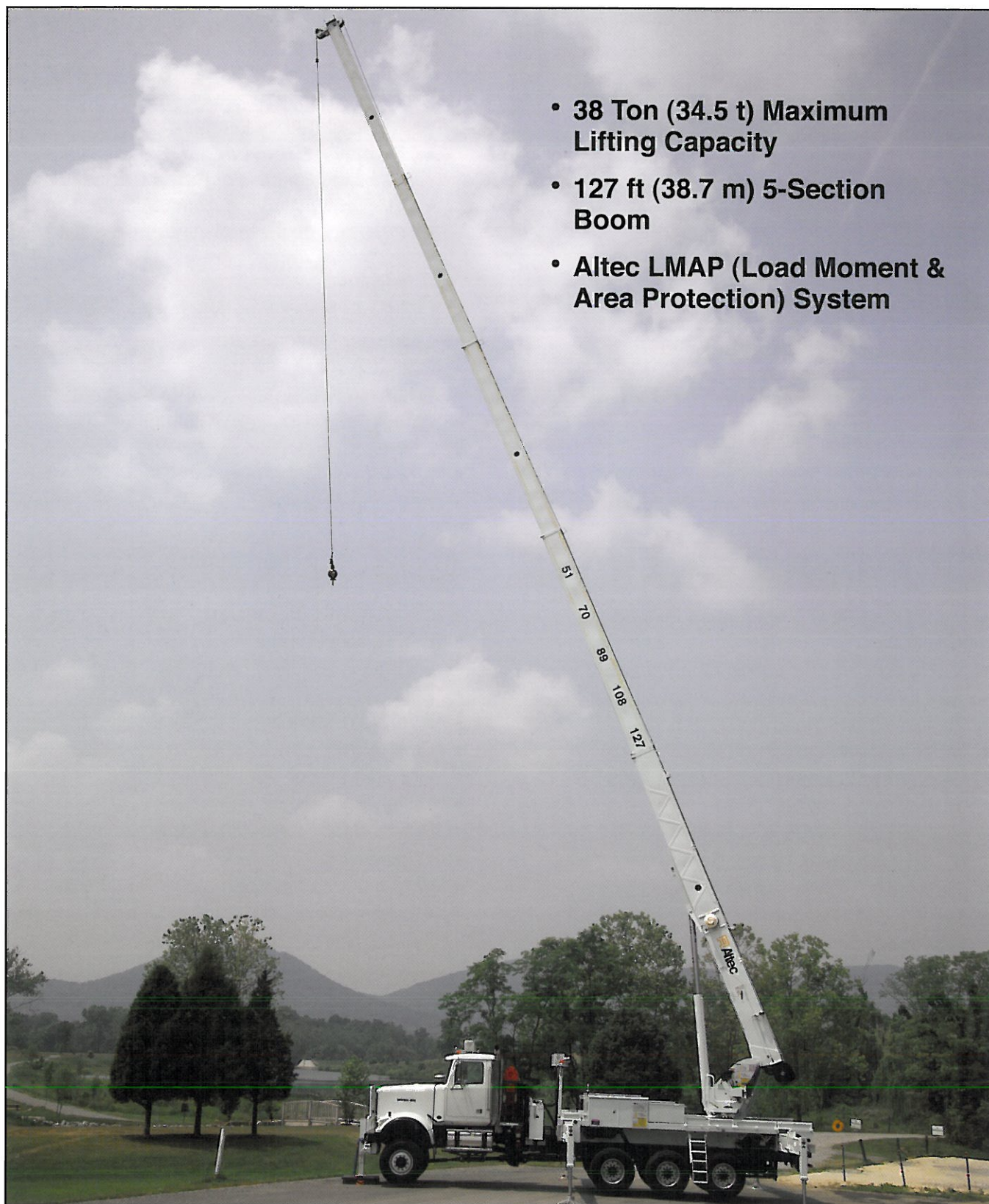
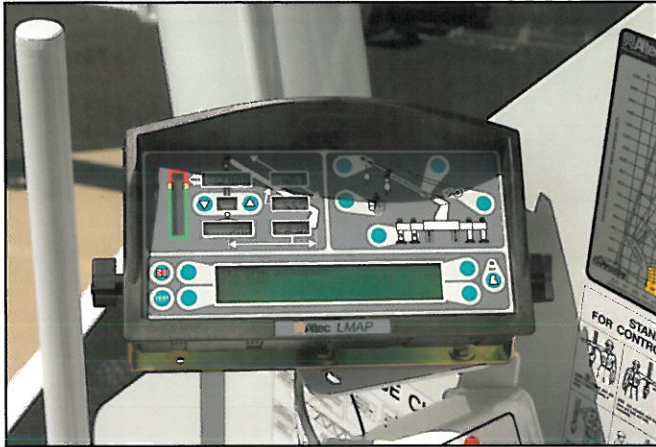


Altec AC38-127S-HL

Hydraulic Telescopic Crane

- 38 Ton (34.5 t) Maximum Lifting Capacity
- 127 ft (38.7 m) 5-Section Boom
- Altec LMAP (Load Moment & Area Protection) System





Altec LMAP System

RECOMMENDED FEATURES

- Wheel Chocks
- Fall Protection System (with Platform)
- Radio Remote Control (with Platform)

CRANE SPECIFICATIONS

- 76,000 lb (34,475 kg) Maximum Lifting Capacity
- 127 ft (38.7 m) 5-Section Non-Insulated Boom
- 137 ft (41.8 m) Maximum Sheave Height
- Stowed Travel Height of 12.9 ft (3.9 m)
- Vehicle Travel Length of 38 ft (11.6 m)
- Sequential Out-and-Down Outriggers
 - Full Span 24 ft (7.3 m)
 - Mid Span 15.75 ft (4.8 m)
 - Short Span 8.17 ft (2.5 m)
- Hydraulic Pilot-Operated Control System
- Continuous Rotation
- Hydraulic Oil Cooling System
- Life Cycle Tested for Reliability

STANDARD SAFETY FEATURES

- Altec LMAP (Load Moment & Area Protection) System
 - Rated Capacity Limiter
 - Displays: Boom Length, Boom Angle, Load on Hook, Percent of Rated Capacity
 - Electronic Working Area Definition
 - Operator Defined Audible Alarm Set-Points for Boom Angle, Length and Rotational Position
- Outrigger Boom Interlock System
- Outrigger Motion Alarm
- Back-Up Alarm
- Emergency Stop at Operator Controls
- Winch Drum Rotation Indicator
- Anti-Two Block Device
- Front Bumper Outrigger
- Altec Opti-View® Riding Seat Control Station

OPTIONS

- 1-Piece 31 ft (9.4 m) Jib
- 2-Man Steel Platform
- Climate-Controlled Enclosed Cab
- Load Blocks for Multiple Parts of Line
- Hydraulic Tool Circuit at Tail Shelf
- Pintle Hitch
- Hot Shift Power Take-Off
- Utility Tool Boxes
- Rotation Resistant Wire Rope
- Glide Swing
- Winch Control at Load Hook Stow Point
- Auxiliary Winch, 5000 lb (2250 kg) Capacity

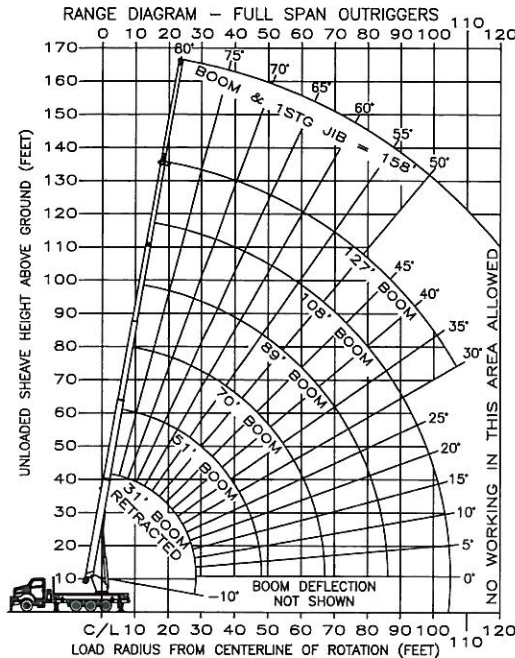
CHASSIS REQUIREMENTS

	Rear Tri-Drive	
Gross Vehicle Weight Rating	70,000 lb	(31,750 kg)
Front Axle Weight Rating	20,000 lb	(9070 kg)
Rear Axle Combination Rating	54,000 lb	(24,494 kg)
Cab-to-Axle	160 in	(4064 mm)
Wheel Base	251 in	(6375 mm)

Altec AC38-127S-HL Capacities



MODEL AC38-127S-HL EXAMPLE CAPACITIES



BOOM LOAD CAPACITIES IN LBS. WITH FULL SPAN OUTRIGGERS (24 FT)

LOAD RADIUS (FT)	31 FT BOOM		51 FT BOOM		70 FT BOOM		89 FT BOOM		108 FT BOOM		127 FT BOOM	
	Δ	LBS	Δ	LBS	Δ	LBS	Δ	LBS	Δ	LBS	Δ	LBS
6	73	76000										
8	69	62600										
10	65	54000	76	35000								
12	60	47500	74	33000								
15	56	39500	70	31500	76	30000						
20	45	28000	64	26450								
25	28	21000	57	21000	68	20500	73	17000				
30			50	17250	63	15650	70	14400	75	12000	77	8400
35			42	13800	58	13700	66	11850	72	10500	75	7900
40			33	11400	53	11000	62	9800	69	9150	73	7600
45			20	9200	47	9950	59	8100	66	7650	71	7350
50					41	8100	55	7200	63	6550	69	6500
55					34	6700	51	6700	60	5500	66	5600
60					26	5500	47	5700	56	5000	63	4900
65					14	4400	43	4750	53	4650	60	4200
70							37	3750	49	3850	58	3600
75							30	3050	46	3250	55	3100
80							23	2450	41	2650	52	2650
85							9	1900	37	2050	49	2200
90									32	1600	46	1800
95									26	1150	42	1300
100									22	850	37	950
105											34	800
110											30	650
	0	15500	0	6450	0	2900	0	1450	0	700		NO CAPACITY
		500		350		250		200		150		150

NOTE: RATINGS ARE BASED ON HEAVY LINE ABOVE THE STRUCTURAL COMPETENCE AND NOT ON MACHINE STABILITY



For Service: 1-877-GO-ALTEC

For Sales: 1-866-966-2969

Altec Cranes are supported by service centers and over 115 mobile service technicians positioned across North America, seven days a week, 24 hours a day.

United States:

Alabama Service Center
1730 Vanderbilt Road
Birmingham, AL 35234

Arizona Service Center
2420 South 16th Avenue
Phoenix, AZ 85007

California Service Center (Northern)
325 Industrial Way
Dixon, CA 95620

California Service Center (Southern)
2882 Pomona Boulevard
Pomona, CA 91766

Colorado Service Center
641 Telluride Street
Aurora, CO 80011

Florida Service Center
2570 Old Okeechobee Road
West Palm Beach, FL 33409

Georgia Service Center
287 First Street
Forest Park, GA 30297

Indiana Service Center
5201 West 84th Street
Indianapolis, IN 46268

Kentucky Service Center
200 Altec Drive
Elizabethtown, KY 42701

Maryland Service Center
1434 Hughes Ford Road
Frederick, MD 21701

Massachusetts Service Center
28 Wales Street
Millbury, MA 01527

Missouri Service Center
2106 S. Riverside Road
St. Joseph, MO 64507

North Carolina Service Center
1550 Aerial Avenue
Creedmoor, NC 27522

Ohio Service Center
1236 Township Road 1175
Ashland, OH 44805

Oregon Service Center
13817 NE Sandy Boulevard
Portland, OR 97230

Pennsylvania Service Center
250 Laird Street
Plains, PA 18705

Texas Service Center
1001 Solon Road
Waxahachie, TX 75156

Virginia Service Center
325 South Center Drive
Daleville, VA 24083

Canada:

British Columbia Service Center
12352 84th Avenue
Surrey, BC V3W 0J5

Manitoba Service Center
57 Durand Road
Winnipeg, Manitoba R2J 3T1

Ontario Service Center
831 Nipissing Road
Milton, Ontario L9T 4Z4



Vehicle Travel Height of 12.9 ft (3.9 m)



Optional 2-Man Platform

Altec Industries, Inc.
325 South Center Drive
Daleville, VA 24083
1-540-992-5300



Manufacturing and Service Facilities Located
Throughout the United States and Canada
www.altec.com