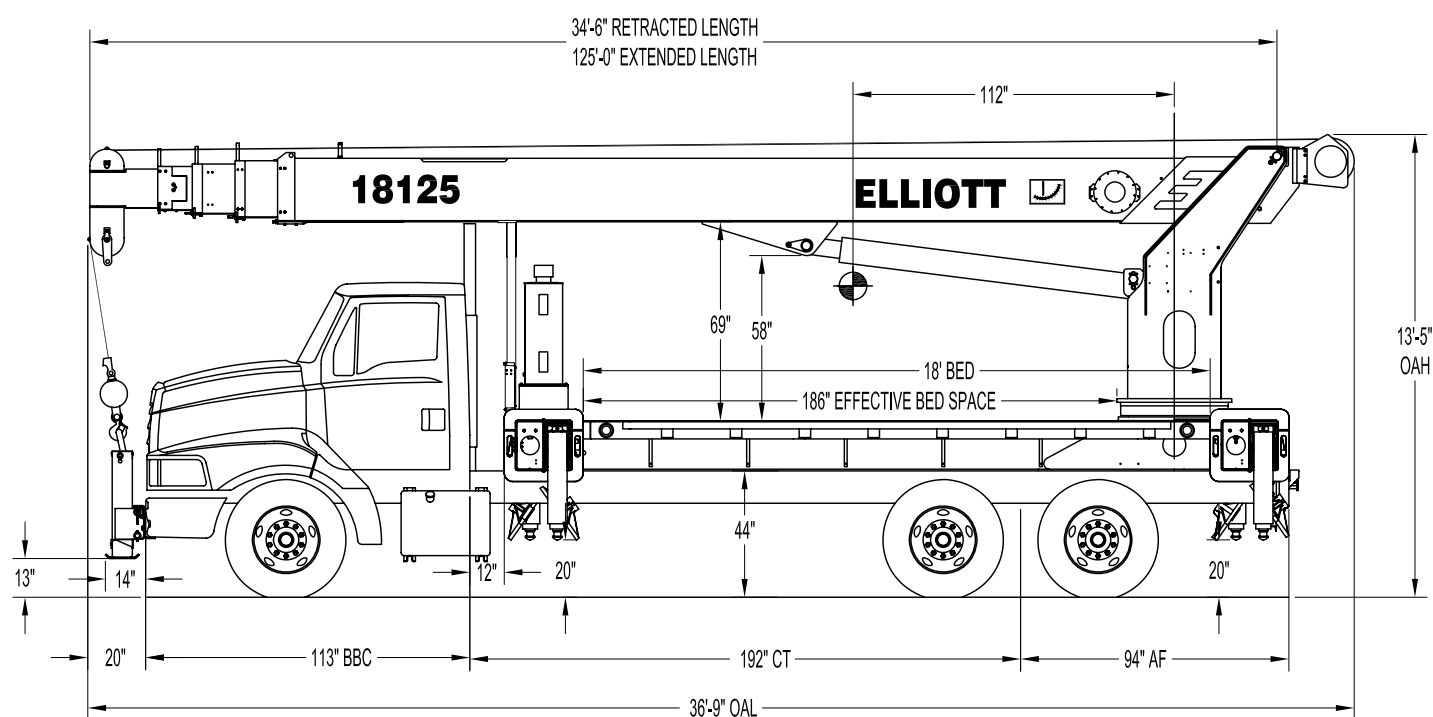


18125R SIDE VIEW DIAGRAM



- | | | | |
|---------------------------------|----------------------|---------------------------------|------------------|
| • Maximum Vertical Reach | 137'/41.7 m | • Powered Boom Sections | 5 |
| • Working Area | 360 Degrees Standard | • Overall Height | 13'5"/4.1 m |
| • Lifting Capacity | 36,000 lbs/16,329 kg | • Operator Controls | Rotating Standup |
| • Boom Length | 125'/38.1 m | • Outrigger Type Front | Out-Down |
| • Crane Weight (Dry) | 27,500 lbs/12,474 kg | • Outrigger Spread Front | 20'/6.1 m |
| • Jib Lengths | N/A | • Outrigger Type Rear | Out-Down |
| • Winch Bare Drum Pull | 12,800 lbs/5,806 kg | • Outrigger Spread Rear | 20'/6.1 m |

TECHNICAL SPECIFICATIONS

Crane Capacity: 36,000 lbs at 6' load radius.

Maximum Tip Height: 137' height.

Control Console: Rotating turret single operator standup control station equipped with four single axis control levers for the main crane controls. Operator station includes LMI display, bubble level gauge, engine start/stop switch, signal horn button, variable speed throttle switch, lifting capacity chart, range diagram chart, boom angle indicator, system pressure gauge, 12V DC power source, and cup holder. Independent ground level electric operated outrigger controls.

Boom: Five-section fully proportional, high strength steel plated rectangular tube sections. A maximum boom tip height of 137' mounted on a truck. The boom nose contains one floating upper sheave and two lower sheaves. Assembly includes heavy-duty cylinder fittings, pivot pins, and replaceable wear pads.

Winch: Mounted at the base of the boom for a long fleet angle and flat level spooling of cable. Winch is driven by a planetary reducer and powered by a hydraulic motor. Burst-of-speed winch provides increased line speed. The winch brake is spring applied, pressure release design. Supplied with 275' of 9/16" wire rope with a single line pull of 9,060 pounds, and a downhaul ball with swivel hook for single part line.

Load Moment Indicator System:

System senses hoist cylinder pressures, boom length and boom angle with hydraulic function lockout. The display console is equipped with a bar graph showing crane utilization, boom angle or boom length, a mode select controls for main boom and jib operation, and an anti-two block with an audio/visual warning and shut-off functions to limit hook-boom point contact.

Outriggers: Two sets of out and down outriggers with 20' span. Single front

bumper stabilizer required.

Frame: Full length, all welded rigid 4-plate design sub-frame. Sub-frame allows for bolt-on addition of 18' bed.

Turret: Reverse offset turret is one-piece weldment. Turret rotates on large diameter ball bearing.

Rotation: Hydraulic motor drives turret through double reduction planetary swing drive for 360 degree continuous rotation. The swing drive system has a spring applied, pressure release brake.

Lift: One double-acting long stroke cylinder provides smooth and stable boom elevation. Holding valve prevents boom from falling in event of hose failure.

Boom Extension: Incorporates a two-stage hydraulic extension cylinder, attached to the largest boom section, with a proportional cable extension system driving the outermost section.

Hoses: All high pressure hoses are wire braid reinforced with a minimum safety factor of 4 to 1.

Cylinders: All cylinders use microhoned cylinder tubing, chrome shafts, top grade packing and protective rod wipers. Cylinder-mounted holding valves provided on all load-holding cylinders.

Hydraulic System: Equipped with air-shift PTO, piston pump, SAE O-ring face seals on pressure lines, and a 10-micron return line filter. The control valve distributes all flow to hoist system, swing circuit, and other crane functions. System is closed center type.

Oil Tank Capacity: 143 gallon mounted to truck frame on roadside.

Cab Equipment: PTO switch with indicator lights installed in truck cab. U/L approved 5:BC dry chemical fire extinguisher installed in truck cab.

Operators Manual & Video: Two CD copies and one hard copy of operation, maintenance, safety and parts manual

provided with each unit. Operational and safety video provided at delivery.

Installation: Unit installed on chassis, painted, system and tank filled with oil, tested, inspected, and ready to operate.

Standard Paint: Paint turret and boom white, outriggers red, and bed and boxes black.

Bumper: Bureau of Motor Carrier Safety rear bumper.

Weight: Approximately 27,500 lbs. with 18' steel-floor bed less truck.

Truck Chassis Required: Approx. 192" C.A. RBM 3,300,000 in-lb. per rail, 20,000 lb. front axle and 60,000 lb. GVWR required. Trucks must have front frame extension, 12V electrical system with high capacity alternator, cab clearance stop/tail/backup lights, and I.D. lamps. Recommended GVWR is minimum for BoomTruck with flatbed only. Contact factory when additional equipment is to be added.

Options:

Rotating Enclosed Crane Cab with Diesel Heater.

Radio Remote Controls.

Gravity Leveled and Rotating Steel Work Platform.

Roadable Yoke-Style and Gravity Leveled Work Platform.

Hydraulic Tool Circuits on Bed.

Much More...

Elliott Equipment Company reserves the right to change the specification of any unit at any time without prior notice. This brochure is only a statement of general specifications on the date of this publication. For more detailed info on specific Elliott trucks go to www.elliottequip.com

LOAD CHART - MAIN BOOM, FULL-SPAN OUTRIGGERS



MODEL 1800

125-ft BOOM

MAIN BOOM LOAD RATINGS WITH FULLY EXTENDED OUTRIGGERS

MAIN BOOM LOAD RATINGS

LOAD RATINGS IN lbs WITH OUTRIGGERS AND STABILIZERS EXTENDED

LOAD RADIUS IN FEET	LOADED BOOM ANGLE	31-ft	LOADED BOOM ANGLE	A 46-ft	LOADED BOOM ANGLE	B 62-ft	LOADED BOOM ANGLE	C 78-ft	LOADED BOOM ANGLE	D 94-ft	LOADED BOOM ANGLE	E 110-ft	LOADED BOOM ANGLE	F 126-ft
6	78.5	36,000												
8	74.5	31,000												
10	70.5	28,500	78	22,200										
12	66	26,000	75.5	22,200										
14	61.5	22,900	73	22,200	78.5	22,000								
16	57	19,000	70	19,600	76.5	20,000								
18	52	16,200	67.5	16,600	74.5	17,000								
20	46	13,800	64.5	14,300	72.5	14,650	78	15,200						
25	28	10,000	57	10,500	67.5	10,800	77.5	11,700	77.5	9,400				
30			48.5	7,950	62	8,200	73.5	9,000	74.5	7,800	77.5	6,850	80	4,400
35			38.5	6,150	57	6,400	69.5	7,100	71	6,700	74.5	5,850	77.5	4,400
40			25.5	4,800	51	5,150	65.5	5,700	67.5	5,500	72	5,050	75	4,400
45					44	4,100	61	4,650	64	4,450	69	4,600	72.5	4,000
50					36	3,250	56.5	3,800	60.5	3,600	66	3,600	70	3,550
55					25	2,600	52	3,150	56.5	2,950	63	2,950	67.5	3,150
60							46.5	2,550	52.5	2,400	60	2,400	65	2,600
65							40.5	2,050	48.5	1,950	56.5	1,800	62	2,150
70							33.5	1,600	43.5	1,550	53.5	1,400	59.5	1,750
75							25	1,200	38.5	1,150	49.5	1,100	56.5	1,400
80									32.5	800	46	750	53.5	1,100
85											41.5	500	50.5	800
90													47	500
	0	7,000	0	3,800	0	2,000	0	900						

NOTICE

- DO NOT DEADHEAD LINE BLOCK AGAINST BOOM TIP WHEN EXTENDING BOOM
- KEEP AT LEAST 5 WRAPS OF LOADLINE ON THE WINCH DRUM AT ALL TIMES
- USE ONLY 9/16" DIAMETER WIRE ROPE, AS SPECIFIED BELOW, WITH THE PROPER BREAKING STRENGTHS LISTED
- ANTI-TWO-BLOCK SYSTEM MUST BE IN GOOD OPERATING CONDITION BEFORE OPERATING CRANE. SEE OPERATION & SAFETY MANUAL

1-PART LINE



MAX PULL: 9,060 lbs

2-PART LINE



18,120 lbs

3-PART LINE



27,180 lbs

4-PART LINE



36,000 lbs

ELLIOTT EQUIPMENT CO. SUPPLIED
LOADLINE EQUIPMENT DEDUCTIONS:
DOWNHAUL WEIGHT180 lbs
ONE SHEAVE BLOCK.....375 lbs
TWO SHEAVE BLOCK.....640 lbs

9/16" - SPIN RESISTANT (5:1 S.F.) 45,300-lbs. BREAKING STRENGTH

CRANE MEETS ASME B30.1 REQUIREMENTS AT TIME OF MANUFACTURE

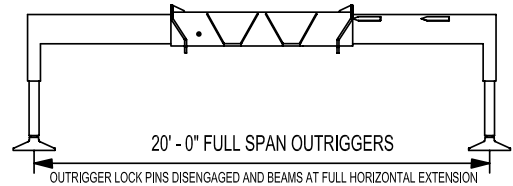
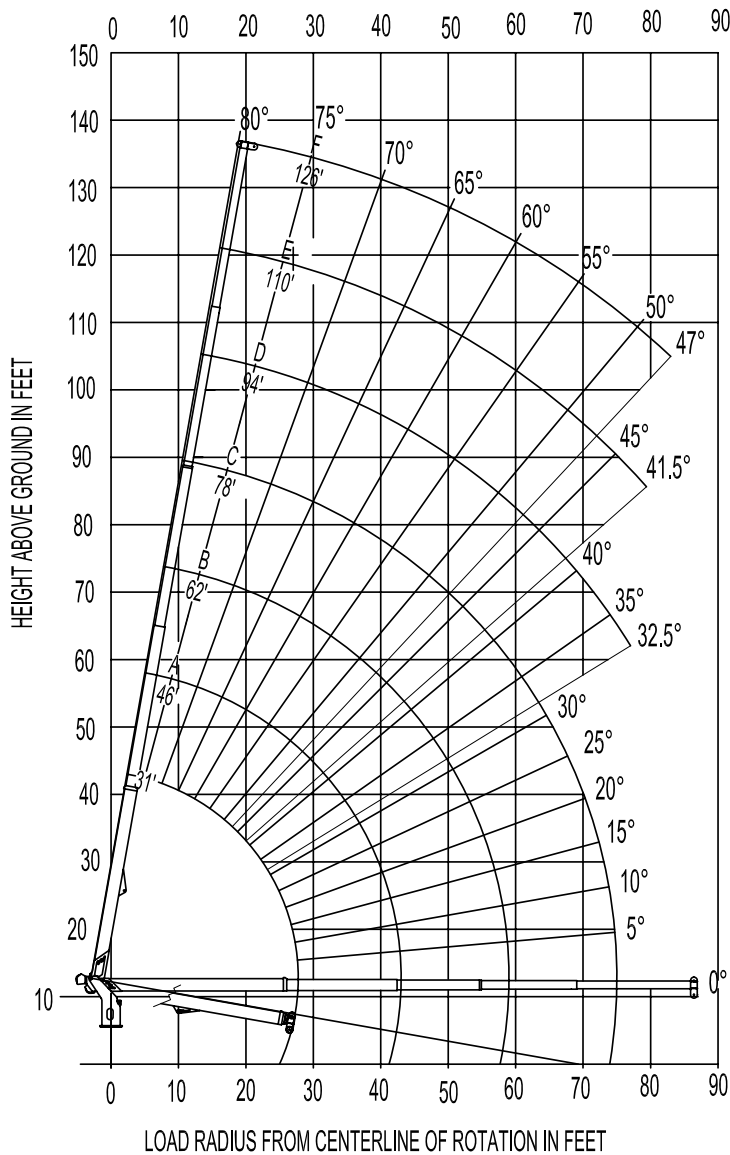
DO NOT PAINT OVER ANY LABELS 111180 04206

RANGE CHART - MAIN BOOM + JIB, FULL-SPAN OUTRIGGERS

ELLIOTT
EQUIPMENT COMPANY

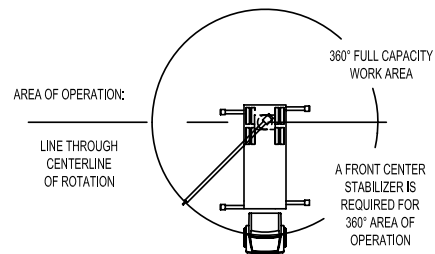
MODEL 1800 125-ft BOOM

RANGE DIAGRAM WITH FULL SPAN OUTRIGGERS



NOTE:

1. Operate jib by radius when main boom is full extended. Increase boom angle if necessary to maintain load radius.
2. When boom is retracted, operate jib by boom angles. Do not exceed any rated jib capacities at reduced boom lengths.
3. Capacities do not exceed 85% stability.
4. Load ratings above bold line are structurally limited.
5. Personnel handling is allowed only with full span outriggers.
6. Boom load ratings are based on loaded boom radius. Loaded boom angles are given as reference only.



DO NOT PAINT OVER ANY LABELS 1111850 042606

CHASSIS SPECIFICATIONS

	1870F BoomTruck
Wheelbase (WB)	256" / 650 cm
Cab to Axle (CA)	192" / 488 cm
Cab to End of Frame (EOF)	286" / 726 cm
Frame Section Modulus	30.0 in3-110,000 psi / 758,428 kPa
Front Axle Gross Weight Rating	20,000 lb / 9072 kg
Rear Axle Gross Weight Rating	40,000 lb / 18 144 kg
Integral Front Frame Rails	Required

Chassis data is minimum general requirements-not for engineering.
Actual dimensions and truck data will depend on truck selection and axle configuration.
*Minimum chassis weight is required to meet 85% stability requirements.

OPTIONS



Radio Remote Control

Interference protected radio remotes let you get closer to your work and have full control over your machine.



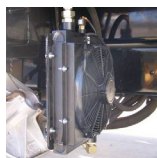
Custom Paint

Choose from a wide list of high quality paint applications including Elliott's standard white or red paint, metallic paints, or multiple colors.



Air Conditioning in Crane Cab

Work all day in comfort with an high efficiency air conditioning system mounted on the rear of the crane control cab.



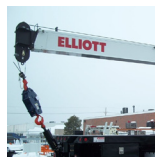
Hydraulic Oil Cooler

Add a bed-mounted hydraulic oil cooler and fan to assist with high duty cycle job applications. A "must" for hot weather environments



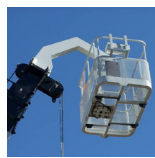
Tool Boxes

Optional tool boxes and bed storage can accommodate any storage need for tools, work materials and more.



Hook Block for Multi-Part Line

Elliott can install a 2-3 part hook block or a 4 part-hook block to improve lifting capabilities. The block can be stored at the rear of the bed.



Gravity Levelled Basket

Elliott's pin-on work platform pins onto the boom for easy installation and removal. Gravity leveling and mechanical rotation makes it a great accessory for any worksite.



Body Mounted Hose Reels and Circuits

Let us work with you to customize your tool compatability by adding hose reels or hydraulic circuits to the crane bed.