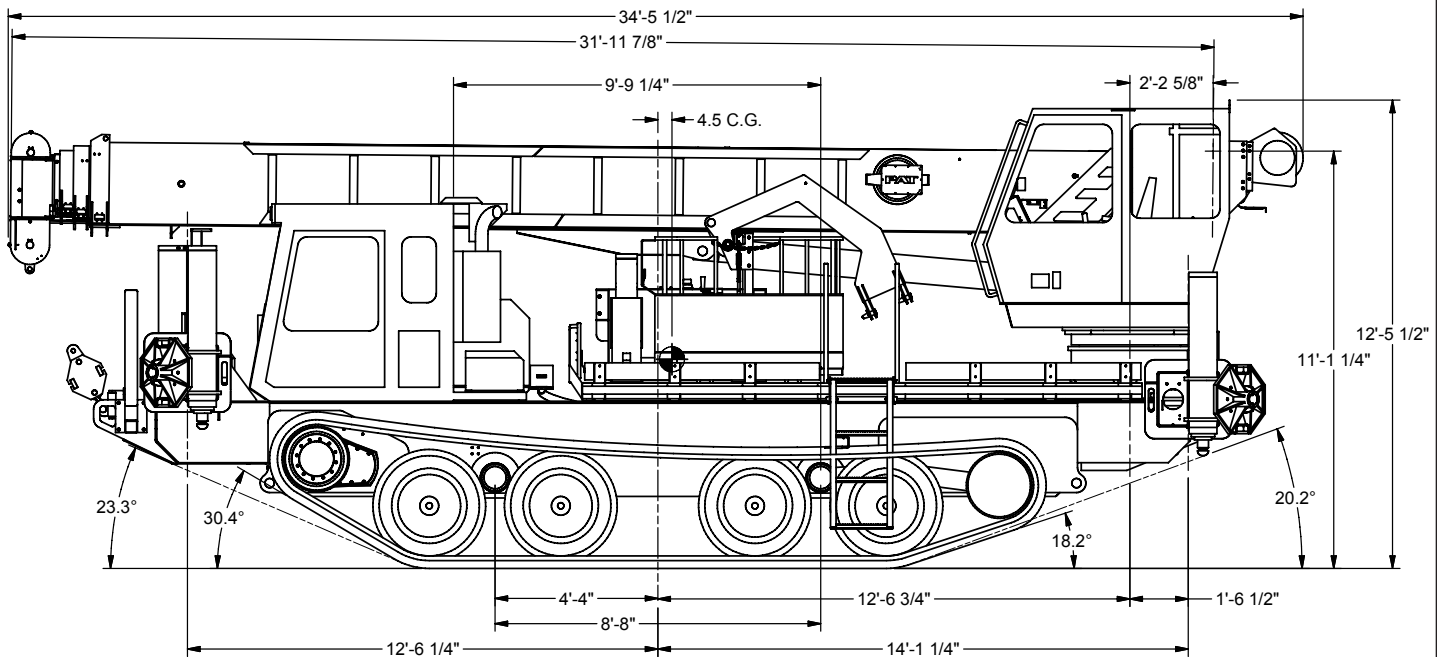


34127R SIDE VIEW DIAGRAM



- | | | | |
|----------------------------------|----------------------|---------------------------------|-----------------------------|
| • Maximum Vertical Reach | 186'/57 m | • Powered Boom Sections | 5 |
| • Working Area | 360 Degrees | • Overall Height | 12'6\"/> |
| • Lifting Capacity | 68,000 lbs/30 844 kg | • Operator Controls | Rotating Seated Crane Cabin |
| • Boom Length | 127'/39m | • Outrigger Type Front | Out-Down |
| • Crane Weight (Standard) | 35,300 lbs/16 012 kg | • Outrigger Spread Front | 22'4\"/> |
| • Jib Lengths | 49'/15 m | • Outrigger Type Rear | Out-Down |
| • Winch Bare Drum Pull | 12,800 lbs/5806 kg | • Outrigger Spread Rear | 22'4\"/> |

TECHNICAL SPECIFICATIONS

Crane Capacity: 68,000 lbs at 6' load radius.

Maximum Tip Height: 137' height (186' with optional 49' jib)

Control Console: Rotating open seated controls with deluxe operator seat, electric control levers in seat console, pressure gauge, LMI display, bubble level gauge, engine start/stop switch, signal horn button, variable speed throttle switch, lifting capacity chart, range diagram chart, boom angle indicator, system pressure gauge, 12V DC power source, and cup holder. Independent ground level electric operated outrigger controls.

Boom: Five-section fully proportional, high strength steel plated rectangular tube sections. A maximum boom tip height of 137'. The boom nose contains one floating upper sheave and three lower sheaves. Assembly includes heavy-duty cylinder fittings, pivot pins, and replaceable wear pads.

Winch: Mounted at the base of the boom for a long fleet angle and flat level spooling of cable. Winch is driven by a planetary reducer and powered by a hydraulic motor. Burst-of-speed winch provides increased line speed. The winch brake is spring applied, pressure release design. Supplied with 425' of 9/16" diameter rotation resistant wire rope with a single line pull of 9,060 pounds, and a downhaul ball with swivel hook for single part line.

Load Moment Indicator System:

System senses hoist cylinder pressures, boom length and boom angle with hydraulic function lockout. The display console is equipped with a bar graph showing crane utilization, boom angle or boom length, a mode select controls for main boom and jib operation, and an anti-two block with an audio/visual warning and shut-off functions to limit hook-boom point contact.

Outriggers: Two sets of two stage extended out and down overframe outriggers with 22'4" span. Outriggers are configured for full span operation. Outriggers equipped with ball socket aluminum removable pads that stow on vertical outrigger legs.

Frame: 4-plate design sub-frame inside track tub. Sub-frame allows for bolt-on addition of steel diamond plated bed with stake pockets.

Turret: Reverse offset turret is one-piece weldment. Turret rotates on large diameter ball bearing.

Rotation: Hydraulic motor drives turret through double reduction planetary swing drive for continuous rotation. The swing drive system has a spring applied, pressure release brake.

Lift: One double-acting long stroke cylinder provides smooth and stable boom elevation. Holding valve prevents boom from falling in event of hose failure.

Boom Extension: Incorporates a 2-stage hydraulic extension cylinder, attached to the largest boom section, with a proportional cable extension system driving the outermost sections.

Hoses: All high pressure hoses are wire braid reinforced with a minimum safety factor of 4 to 1.

Cylinders: All cylinders use microhoned cylinder tubing, chrome shafts, top grade packing and protective rod wipers. Cylinder-mounted holding valves provided on all load-holding cylinders.

Hydraulic System: Equipped with piston pump, SAE O-ring face seals on pressure lines, and a 10-micron return line filter. The control valve distributes all flow to hoist system, swing circuit, and other crane functions. System is closed center type.

Oil Tank Capacity: 120 gallon mounted on top of bed.

Cab Equipment: U/L approved 5:BC dry chemical fire extinguisher installed in truck cab.

Operators Manual & Video: Two CD copies and one hard copy of operation, maintenance, safety and parts manual provided with each unit. Operational and safety video provided at delivery.

Installation: Unit installed on track vehicle, painted, system and tank filled with oil, tested, inspected, and ready to operate.

Standard Paint: Paint turret and boom white, outriggers red, and bed and boxes black.

Weight: Approximately 35,300 lbs. (crane only).

Track Vehicle Required: 42,000 lb capacity, 12V electrical system with high capacity alternator. Contact factory for complete specification review.

Options:

Rotating Seated Controls with Enclosed Operator Cab

Air Conditioning for Crane Cab

32-49' Telescopic Jib for Basket

Two-Person Gravity-Levelled Basket

Radio Remote Controls

Front Brush Guard

Front or Rear Recovery Winch

Much More...

Elliott Equipment Company reserves the right to change the specification of any unit at any time without prior notice. This brochure is only a statement of general specifications on the date of this publication. For more detailed info on specific Elliott trucks go to www.elliottequip.com

LOAD CHART - MAIN BOOM, FULL-SPAN OUTRIGGERS

LOAD RATINGS WITH FULLY EXTENDED OUTRIGGERS

MAIN BOOM LOAD RATINGS (lbs)

LOAD RADJUS IN FEET	LOADED BOOM ANGLE	32-ft	LOADED BOOM ANGLE	A 52-ft	LOADED BOOM ANGLE	B 70-ft	LOADED BOOM ANGLE	C 90-ft	LOADED BOOM ANGLE	D 110-ft	LOADED BOOM ANGLE	E 127-ft		
6	75.0	68,000												
8	71.3	48,000												
10	67.5	41,000	74.2	33,000										
12	63.5	35,900	71.5	30,000										
15	57.4	28,000	67.4	26,000	75.7	22,600								
20	45.9	20,000	60.4	19,000	71.5	19,000	77.0	16,600						
25	31.6	15,000	52.7	14,300	67.1	15,400	73.5	14,200	78.0	12,300	81.0	8,300		
30			44.2	10,800	62.6	12,000	70.0	11,900	75.2	10,600	78.5	8,000		
35			34.1	8,600	57.8	9,700	66.0	9,700	72.0	9,100	76.0	7,800		
40			20.1	6,800	52.9	7,900	62.0	8,000	69.0	7,900	73.5	7,500		
45					47.5	6,400	58.3	6,500	66.0	6,600	71.0	6,700		
50					41.7	5,100	54.5	5,300	62.5	5,400	68.0	5,600		
55					35.1	4,000	50.5	4,200	59.5	4,300	65.5	4,700		
60					27.2	3,200	46.2	3,300	56.0	3,400	63.0	3,800		
65					16.1	2,400	41.6	2,600	52.3	2,700	60.5	3,000		
70							36.6	2,000	48.9	2,100	57.0	2,300		
75							30.9	1,500	45.4	1,600	54.5	1,800		
80							23.9	1,000	41.6	1,100	51.4	1,300		
85							14.2	700	37.5	800	47.4	900		
90											44.3	500		
	0	10,000	0	4,100	0	2,000								
DEDUCTIONS FOR STOWED JIB (lbs)		900		560		410		320		260		230		

ELLIOTT EQUIPMENT CO. SUPPLIED
LOADLINE EQUIPMENT DEDUCTIONS:
DOWNHAUL WEIGHT180 lbs
ONE SHEAVE BLOCK.....236 lbs
TWO SHEAVE BLOCK.....291 lbs
THREE SHEAVE BLOCK.....639 lbs
FOUR SHEAVE BLOCK.....762 lbs
AUXILIARY SHEAVE.....100 lbs

DEDUCTIONS FOR STOWED EXTENDABLE JIB (lbs)

1-PART LINE



MAX PULL: 9,600 lbs

MAX PULL: 9,060 lbs

2-PART LINE



19,200 lbs

18,120 lbs

3-PART LINE



28,800 lbs

27,180 lbs

4-PART LINE



38,400 lbs

36,240 lbs

5-PART LINE



48,000 lbs

45,300 lbs

6-PART LINE



57,600 lbs

54,360 lbs

7-PART LINE



67,200 lbs

63,420 lbs

8-PART LINE



68,000 lbs

68,000 lbs

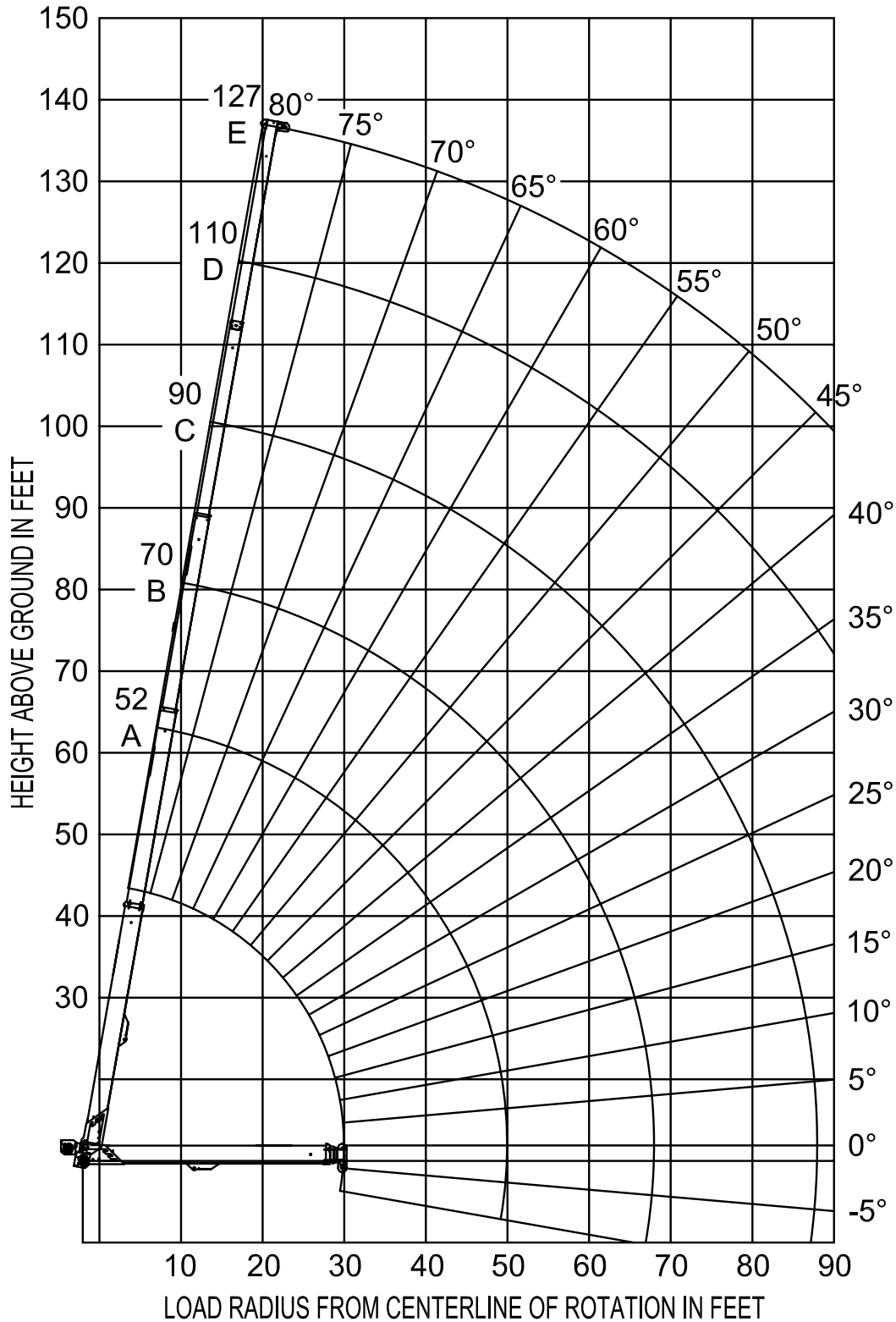
NOTICE

- DO NOT DEADHEAD LINE BLOCK AGAINST BOOM TIP WHEN EXTENDING BOOM.
- KEEP AT LEAST 5 WRAPS OF LOADLINE ON THE WINCH DRUM AT ALL TIMES.
- USE ONLY 9/16" DIAMETER WIRE ROPE, AS SPECIFIED BELOW, WITH THE PROPER BREAKING STRENGTHS LISTED.
- ANTI-TWO-BLOCK SYSTEM MUST BE IN GOOD OPERATING CONDITION BEFORE OPERATING CRANE. SEE OPERATION & SAFETY MANUAL.

9/16" - 6 x 37 IWRC (3.51 S.F.) 33,600-lbs. BREAKING STRENGTH

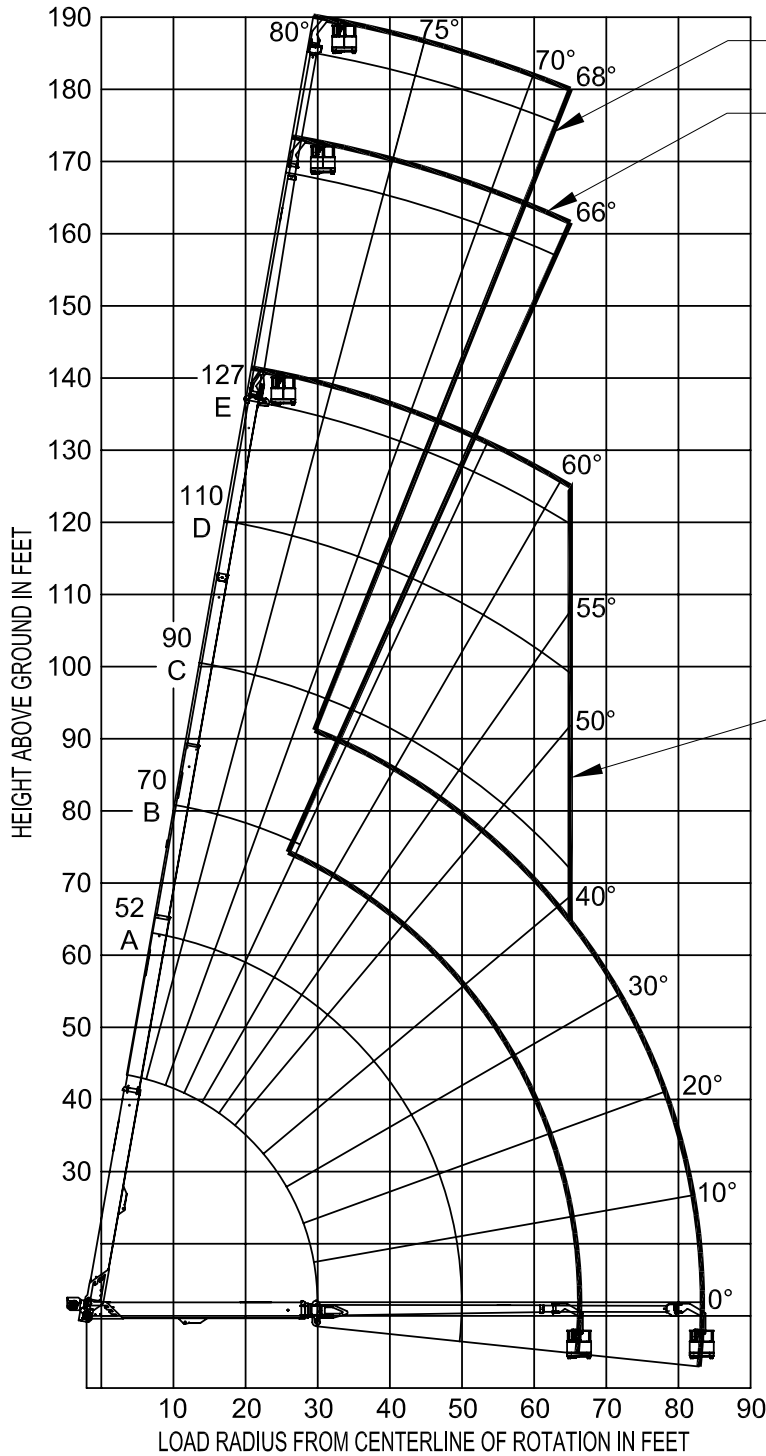
9/16" - SPIN RESISTANT (5:1 S.F.) 45,300-lbs. BREAKING STRENGTH

RANGE CHART - MAIN BOOM, FULL-SPAN OUTRIGGERS



RANGE CHART - JIB + WORK PLATFORM, FULL-SPAN OUTRIGGERS

RANGE DIAGRAM WITH PLATFORM ATTACHED AND 32 / 49 FT PLATFORM EXTENSION



PLATFORM EXTENSION OUT (49')

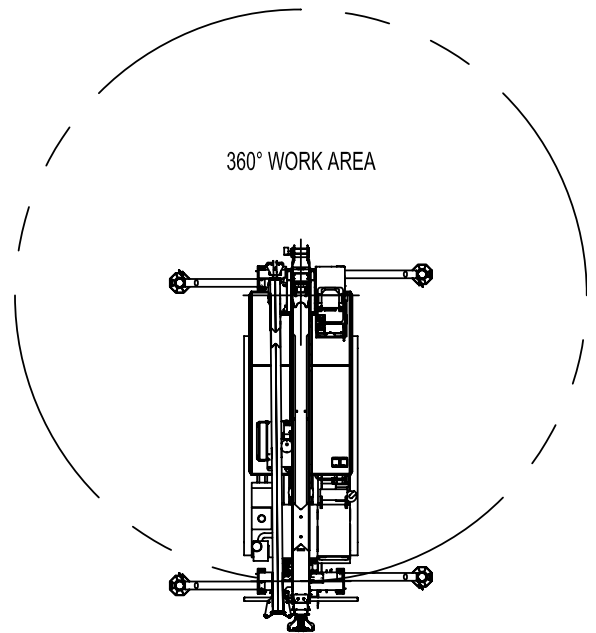
PLATFORM EXTENSION IN (32')

PERSONNEL HANDLING IS ALLOWED ONLY WITH FULL SPAN OUTRIGGERS

PLATFORM CAPACITY 600 LB

DO NOT OPERATE PLATFORM EXTENSION IN WINDS EXCEEDING 15 MPH

PLATFORM ON MAIN BOOM



TRACK VEHICLE SPECIFICATIONS

	34127R BoomTruck
Overall Length	330" / 838 cm
Overall Width	204" / 518 cm
Overall Height	334" / 848 cm
Payload Capacity	42,000 lbs / 19,051 kg
Electrical System	12 Volt
Drive System	Hydrostatic

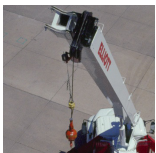
Chassis data is minimum general requirements-not for engineering.
 Actual dimensions and track vehicle data will depend on machine selection and configuration.
 *Minimum chassis weight is required to meet 85% stability requirements.

OPTIONS



Radio Remote Control

Interference protected radio remotes let you get closer to your work and have full control over your machine. Includes battery charging feature and optional LMI screen.



Pin-On Jib Attachment

One piece & two piece telescoping or fixed jibs that stow on the side of the boom for easy placement while on the worksite.



Brush Guard

Heavy-duty steel brush guard prevents tree limbs and other materials from damaging the BoomTruck or obscuring visibility.



High-Power Recovery Winch

A front or rear mounted recovery winch makes it easy to pull equipment out of thick mud and rough terrain.



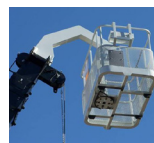
Operator Cab

The enclosed crane operator cab includes windshield wipers, intuitive control systems, and optional heating and air conditioning.



Hook Block for Multi-Part Line

Elliott can install a 2-3 part hook block or a 4 part-hook block to improve lifting capabilities. The block can store right on the rear of the bed.



Gravity Levelled Basket

Elliott's work platform pins onto the boom for easy installation and removal. Gravity leveling and mechanical rotation makes it a great accessory for any worksite.



Body Mounted Hose Reels and Circuits

Let us work with you to customize your tool compatibility by adding hose reels or hydraulic circuits to the crane bed.