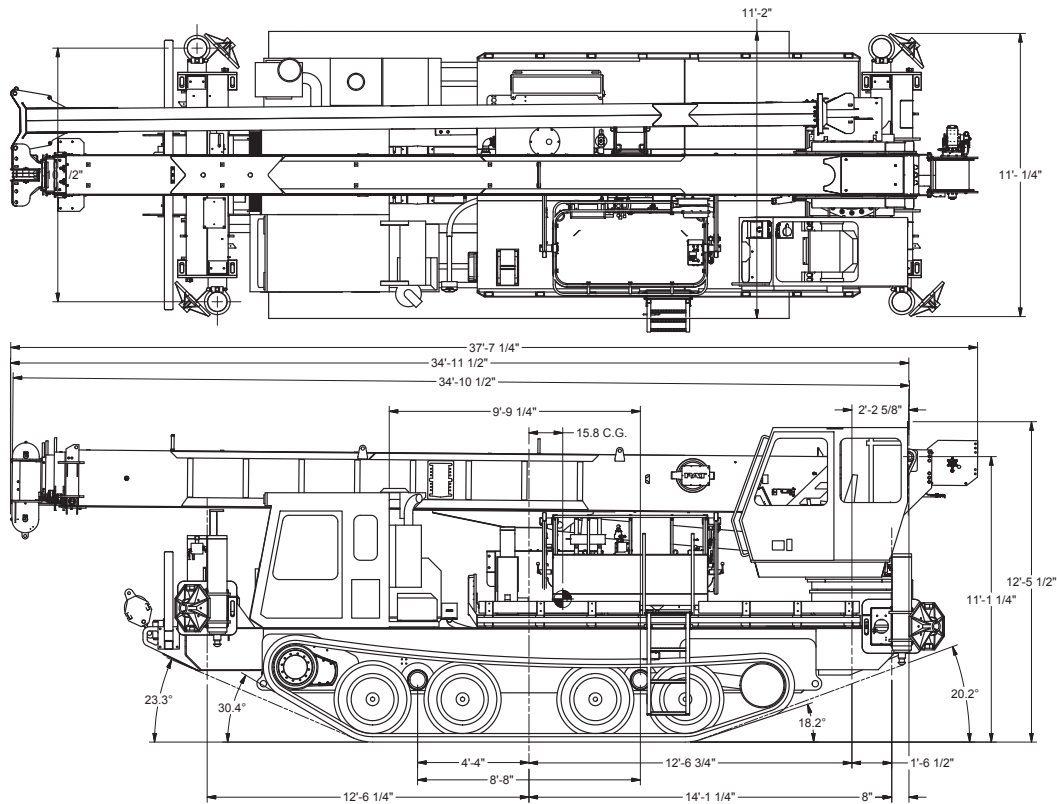


34142 SIDE VIEW DIAGRAM



- | | | | |
|----------------------------------|----------------------|---------------------------------|---------------------------|
| • Maximum Vertical Reach | 201'61,3 m | • Powered Boom Sections | 5 |
| • Working Area | 360 Degrees | • Overall Height | 12'6"/3,8 m |
| • Lifting Capacity | 68,000 lbs/30 844 kg | • Operator Controls | Rotating Seated Crane Cab |
| • Boom Length | 142'43,3 m | • Outrigger Type Front | Out-Down |
| • Crane Weight (Standard) | 38,600 lbs/17 508 kg | • Outrigger Spread Front | 22'4"/6,8 m |
| • Jib Lengths | 32'-49'9,7-15 m | • Outrigger Type Rear | Out-Down |
| • Winch Bare Drum Pull | 12,800 lbs/5806 kg | • Outrigger Spread Rear | 22'4"/6,8 m |

TECHNICAL SPECIFICATIONS

Crane Capacity: 68,000 lbs at 6' load radius.

Maximum Tip Height: 152' height (201' with optional 32'-49' jib)

Control Console: Rotating open seated controls with deluxe operator seat, electric control levers in seat console, pressure gauge, LMI display, bubble level gauge, engine start/stop switch, signal horn button, variable speed throttle switch, lifting capacity chart, range diagram chart, boom angle indicator, system pressure gauge, 12V DC power source, and cup holder. Independent ground level electric operated outrigger controls.

Boom: Five-section fully proportional, high strength steel plated rectangular tube sections. A maximum boom tip height of 152'. The boom nose contains one floating upper sheave and three lower sheaves. Assembly includes heavy-duty cylinder fittings, pivot pins, and replaceable wear pads.

Winch: Mounted at the base of the boom for a long fleet angle and flat level spooling of cable. Winch is driven by a planetary reducer and powered by a hydraulic motor. Burst-of-speed winch provides increased line speed. The winch brake is spring applied, pressure release design. Supplied with 425' of 9/16" diameter rotation resistant wire rope with a single line pull of 9,060 pounds, and a downhaul ball with swivel hook for single part line.

Load Moment Indicator System:

System senses hoist cylinder pressures, boom length and boom angle with hydraulic function lockout. The display console is equipped with a bar graph showing crane utilization, boom angle or boom length, a mode select controls for main boom and jib operation, and an anti-two block with an audio/visual warning and shut-off functions to limit hook-boom point contact.

Outriggers: Two sets of two-stage extended out and down overframe outriggers with 22'4" span. Outriggers are configured for full span operation. Outriggers equipped with ball socket aluminum removable pads that stow on vertical outrigger legs.

Frame: 4-plate design sub-frame inside track tub. Sub-frame allows for bolt-on addition of steel diamond plated bed with stake pockets.

Turret: Reverse offset turret is one-piece weldment. Turret rotates on large diameter ball bearing.

Rotation: Hydraulic motor drives turret through double reduction planetary swing drive for continuous rotation. The swing drive system has a spring applied, pressure release brake.

Lift: One double-acting long stroke cylinder provides smooth and stable boom elevation. Holding valve prevents boom from falling in event of hose failure.

Boom Extension: Incorporates a 2-stage hydraulic extension cylinder, attached to the largest boom section, with a proportional cable extension system driving the outermost sections.

Hoses: All high pressure hoses are wire braid reinforced with a minimum safety factor of 4 to 1.

Cylinders: All cylinders use microhoned cylinder tubing, chrome shafts, top grade packing and protective rod wipers. Cylinder-mounted holding valves provided on all load-holding cylinders.

Hydraulic System: Equipped with piston pump, SAE O-ring face seals on pressure lines, and a 10-micron return line filter. The control valve distributes all flow to hoist system, swing circuit, and other crane functions. System is closed center type.

Oil Tank Capacity: 120 gallon mounted on top of bed.

Cab Equipment: U/L approved 5:BC dry chemical fire extinguisher installed in truck cab.

Operators Manual & Video: Two CD copies and one hard copy of operation, maintenance, safety and parts manual provided with each unit. Operational and safety video provided at delivery.

Installation: Unit installed on track vehicle, painted, system and tank filled with oil, tested, inspected, and ready to operate.

Standard Paint: Paint turret and boom white, outriggers red, and bed and boxes black.

Weight: Approximately 38,600 lbs.

Track Vehicle Required: 40,000 lb payload capacity, 12V electrical system with high capacity alternator. Contact factory for complete specification review.

Options:

Rotating Seated Controls with Enclosed Operator Cab
 Air Conditioning for Crane Cab
 32'-49' Telescopic Jib for Workplatform
 Two-Person Hydraulic Dampening Yoke Workplatform
 Radio Remote Controls
 Front Brush Guard
 Front or Rear Recovery Winch
 Much More...

Elliott Equipment Company reserves the right to change the specification of any unit at any time without prior notice. This brochure is only a statement of general specifications on the date of this publication. For more detailed info on specific Elliott trucks go to www.elliottequip.com

LOAD CHART - MAIN BOOM, FULL-SPAN OUTRIGGERS

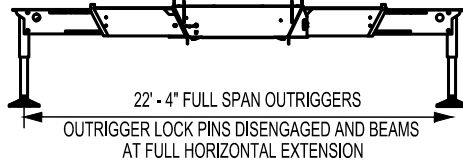


MODEL 3400 142-ft BOOM

LOAD RATINGS WITH FULLY EXTENDED OUTRIGGERS

MAIN BOOM LOAD RATINGS (lbs)

| LOAD RADIUS IN FEET | LOADED BOOM ANGLE | 35-ft | LOADED BOOM ANGLE | A | LOADED BOOM ANGLE | B | LOADED BOOM ANGLE | C | LOADED BOOM ANGLE | D | LOADED BOOM ANGLE | E | LOADED BOOM ANGLE | F | LOADED BOOM ANGLE | G | LOADED BOOM ANGLE | H |
|--|-------------------|--------|-------------------|--------|-------------------|--------|-------------------|--------|-------------------|--------|-------------------|--------|-------------------|--------|-------------------|--------|-------------------|-------|
| | | 47-ft | | 61-ft | | 74-ft | | 88-ft | | 101-ft | | 115-ft | | 128-ft | | 142-ft | | |
| 6 | 81.1 | 68,000 | | | | | | | | | | | | | | | | |
| 8 | 77.7 | 48,000 | | | | | | | | | | | | | | | | |
| 10 | 74.2 | 41,000 | 78.4 | 38,000 | | | | | | | | | | | | | | |
| 12 | 70.6 | 35,900 | 75.9 | 33,000 | 79.1 | 30,000 | | | | | | | | | | | | |
| 15 | 65 | 28,000 | 71.9 | 26,300 | 76.3 | 24,300 | 79.5 | 24,000 | | | | | | | | | | |
| 20 | 54.9 | 20,000 | 65.1 | 19,500 | 71.4 | 19,000 | 75.7 | 17,300 | 78.7 | 16,600 | | | | | | | | |
| 25 | 43 | 15,000 | 57.8 | 15,000 | 66.3 | 14,850 | 71.5 | 14,500 | 75.2 | 14,200 | 77.8 | 13,000 | 81 | 11,000 | | | | |
| 30 | 26.3 | 11,000 | 49.8 | 11,800 | 60.6 | 11,400 | 67.2 | 11,900 | 71.7 | 11,900 | 75 | 11,100 | 77.5 | 9,800 | 79.3 | 8,000 | | |
| 35 | | | 40.5 | 9,000 | 54.5 | 9,150 | 62.8 | 9,700 | 68.1 | 9,700 | 72 | 9,300 | 75 | 8,700 | 77 | 7,800 | 79.1 | 6,000 |
| 40 | | | 28.6 | 6,800 | 48 | 7,400 | 58 | 8,000 | 64.4 | 8,000 | 68.8 | 7,900 | 72.2 | 7,700 | 74.9 | 7,500 | 77 | 5,600 |
| 45 | | | | | 40.7 | 6,000 | 52.9 | 6,400 | 60.6 | 6,500 | 65.6 | 6,500 | 69.8 | 6,600 | 72.6 | 6,500 | 74.8 | 5,400 |
| 50 | | | | | 31.9 | 4,700 | 47.3 | 5,200 | 56.5 | 5,300 | 62.3 | 5,300 | 67 | 5,400 | 70.1 | 5,400 | 72.7 | 5,000 |
| 55 | | | | | 19.8 | 3,600 | 41.2 | 4,100 | 52.3 | 4,200 | 59.1 | 4,200 | 64.2 | 4,400 | 67.6 | 4,400 | 70.5 | 4,400 |
| 60 | | | | | | | 34.9 | 3,200 | 48 | 3,300 | 55.5 | 3,300 | 61.2 | 3,500 | 65 | 3,500 | 68.3 | 3,500 |
| 65 | | | | | | | 26.4 | 2,500 | 43 | 2,600 | 51.8 | 2,600 | 58.1 | 2,700 | 62.4 | 2,900 | 65.9 | 2,900 |
| 70 | | | | | | | 12.9 | 1,300 | 37.3 | 2,000 | 47.6 | 2,000 | 55 | 2,100 | 59.7 | 2,100 | 63.6 | 2,100 |
| 75 | | | | | | | | | 30.8 | 1,400 | 43.1 | 1,500 | 54.6 | 1,600 | 56.9 | 1,600 | 61.2 | 1,600 |
| 80 | | | | | | | | | 22.5 | 800 | 38.2 | 1,000 | 47.8 | 1,100 | 54 | 1,100 | 58.7 | 1,100 |
| 85 | | | | | | | | | | | 32.7 | 500 | 43.8 | 500 | 50.8 | 600 | 56.2 | 600 |
| | 0 | 10,000 | 0 | 6,000 | 0 | 3,000 | 0 | 1,000 | | | | | | | | | | |
| DEDUCTIONS FOR STOWED PLATFORM EXTENSION | | 900 | | 650 | | 500 | | 400 | | 350 | | 300 | | 250 | | 250 | | 200 |



ELLIOTT EQUIPMENT CO. SUPPLIED LOADLINE EQUIPMENT DEDUCTIONS:
 DOWNHAUL WEIGHT.....225 lbs
 ONE SHEAVE BLOCK.....424 lbs
 TWO SHEAVE BLOCK.....592 lbs
 THREE SHEAVE BLOCK.....639 lbs
 FOUR SHEAVE BLOCK.....762 lbs
 AUXILIARY SHEAVE.....100 lbs

CRANE MEETS ASME B30.5 REQUIREMENTS AT TIME OF MANUFACTURE

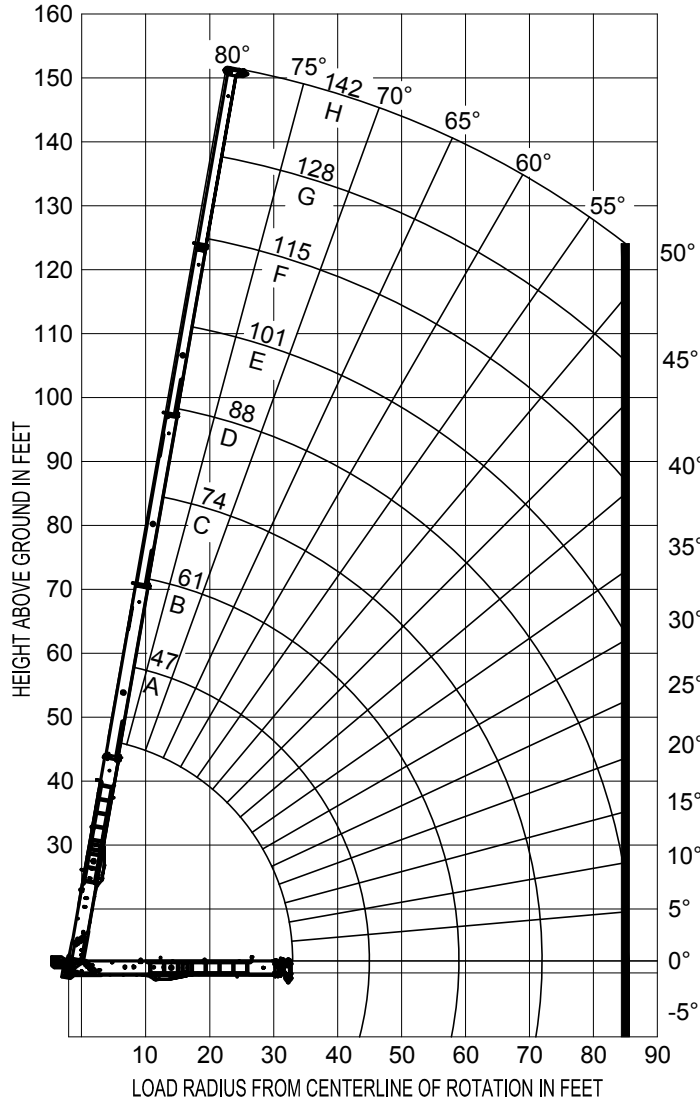
1204090 111914

RANGE CHART - MAIN BOOM, FULL-SPAN OUTRIGGERS

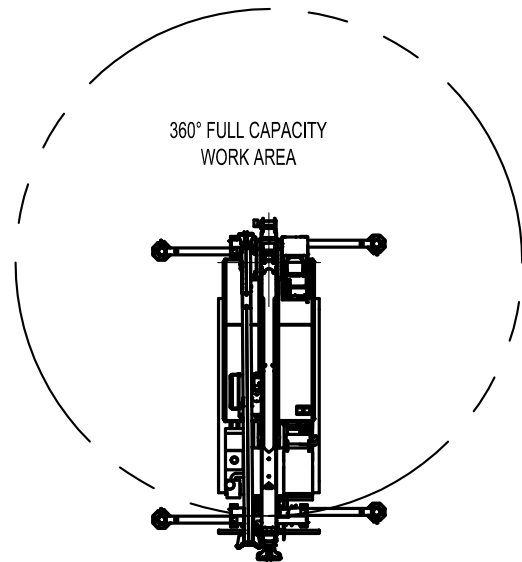


MODEL 3400 142-ft BOOM

RANGE DIAGRAM WITH FULL SPAN OUTRIGGERS



- NOTE:**
1. Boom load ratings are based on loaded boom radius. Loaded boom angles are given as reference only.
 2. Capacities do not exceed 85% stability.
 3. Personnel handling is allowed only with full span outriggers.



CRANE MEETS ASME B30.5 REQUIREMENTS AT TIME OF MANUFACTURE

1204090 111914



Elliott Equipment Company
 4427 South 76th Circle
 Omaha, NE 68127
 Phone: 402-592-4500
 Fax: 402-592-4553
 Email: sales@elliottequip.com

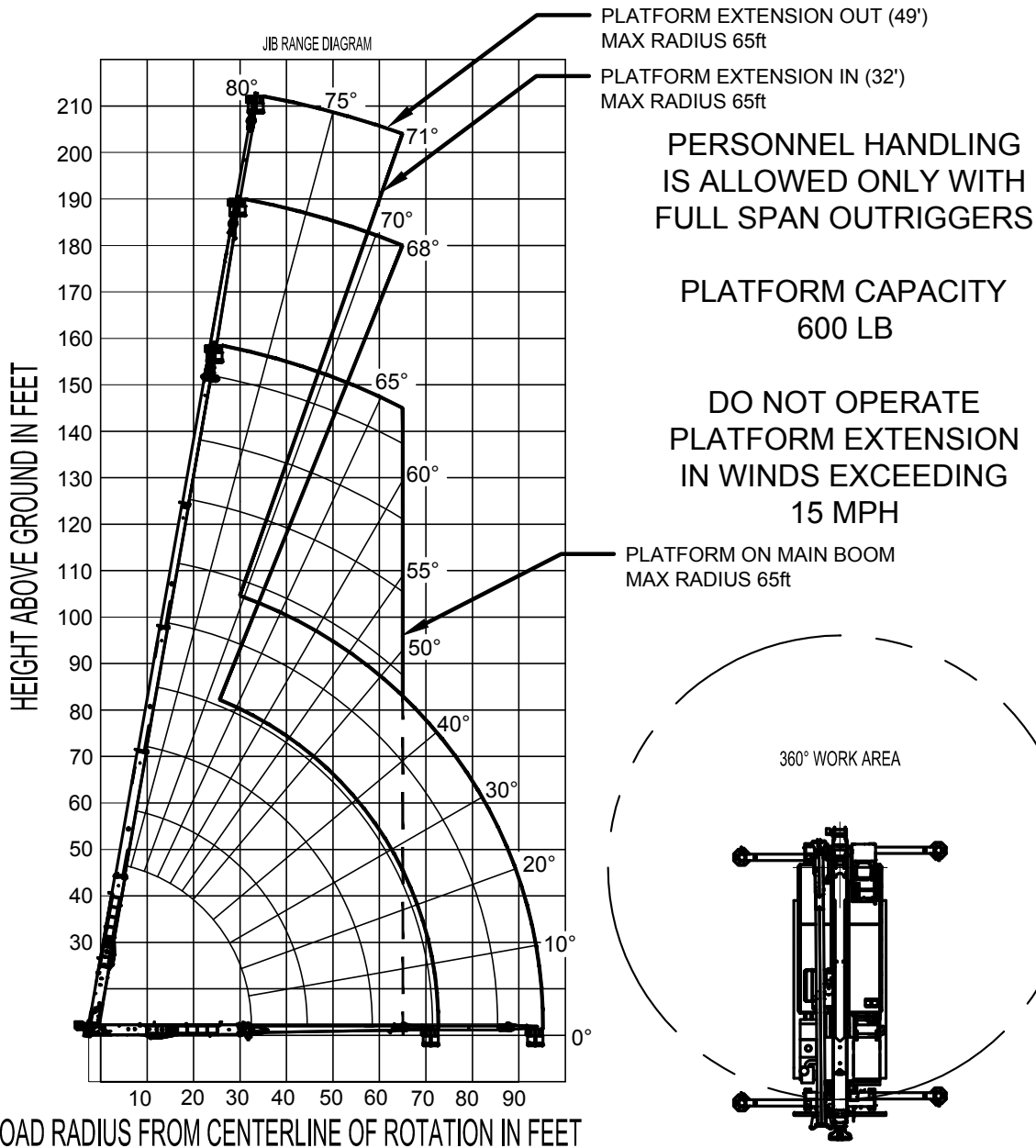
Built for You.
www.elliottequip.com

RANGE CHART - JIB + WORK PLATFORM, FULL-SPAN OUTRIGGERS



MODEL 3400 142-ft BOOM

RANGE DIAGRAM WITH PLATFORM ATTACHED AND 32 / 49 FT PLATFORM EXTENSION



CRANE MEETS ASME B30.5 REQUIREMENTS AT TIME OF MANUFACTURE

1204090 111914



Elliott Equipment Company
4427 South 76th Circle
Omaha, NE 68127
Phone: 402-592-4500
Fax: 402-592-4553
Email: sales@elliottequip.com

Built for You.
www.elliottequip.com

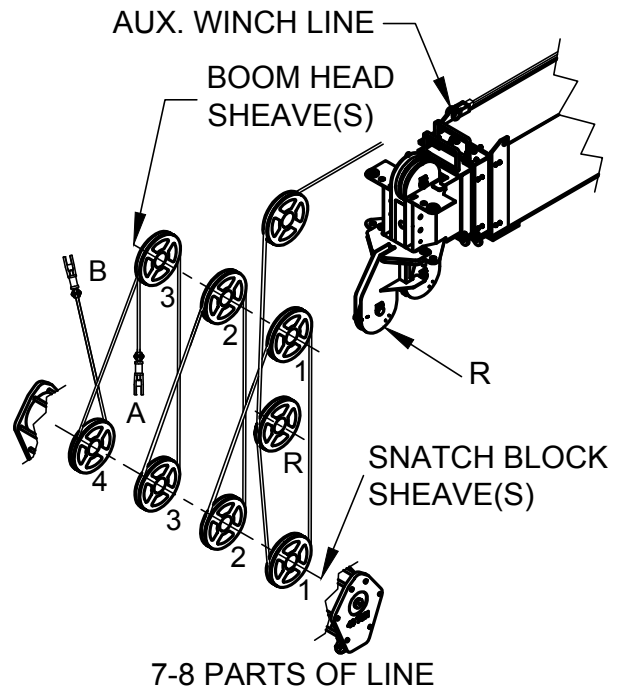
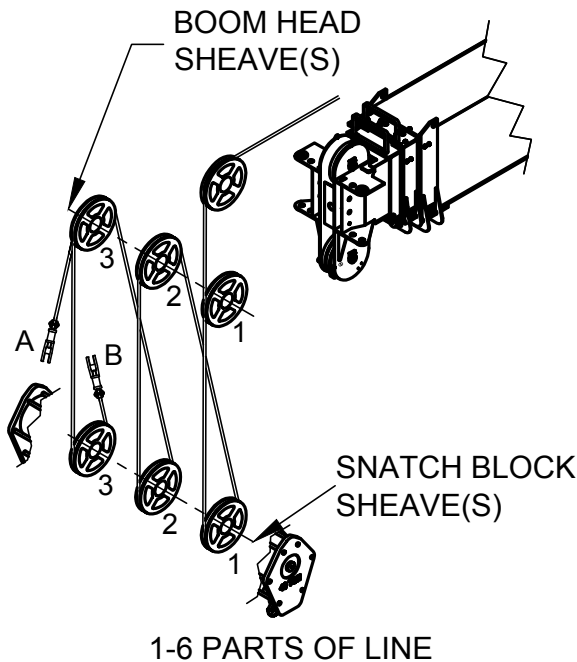
WINCH DATA



MODEL 3400

142-ft BOOM

PARTS OF LINE



NOTICE:

- DO NOT DEADHEAD LINE BLOCK AGAINST BOOM TIP WHEN EXTENDING BOOM.
- KEEP AT LEAST 5 WRAPS OF LOADLINE ON THE WINCH DRUM AT ALL TIMES.
- USE ONLY 9/16" DIAMETER WIRE ROPE, AS SPECIFIED, WITH THE PROPER BREAKING STRENGTH LISTED.
- ANTI-TWO-BLOCK SYSTEM MUST BE IN GOOD OPERATING CONDITION BEFORE OPERATING CRANE. SEE OPERATION & SAFETY MANUAL.

| PARTS OF LINE | SHEAVE(S) ON BOOM HEAD | SHEAVE(S) ON SNATCH BLOCK | 9/16" - SPIN RESISTANT (5:1 S.F.) 45,300-lbs. BREAKING STRENGTH |
|---------------|------------------------|---------------------------|---|
| 1 | 1 | A | 9,060 lbs |
| 2 | 1 B | 1 | 18,120 lbs |
| 3 | 12 | 1 A | 27,180 lbs |
| 4 | 12 B | 12 | 36,240 lbs |
| 5 | 123 | 12 A | 45,300 lbs |
| 6 | 123 B | 123 | 54,360 lbs |
| 7 | R 123 | 123 A | 63,420 lbs |
| 8 | R 123 B | 1234 | 68,000 lbs |

A-DEAD END FOR ODD PARTS OF LINE
 B-DEAD END FOR EVEN PARTS OF LINE
 R-ROOSTER SHEAVE REQUIRED WHEN USING 7 AND 8 PARTS OF LINE

CRANE MEETS ASME B30.5 REQUIREMENTS AT TIME OF MANUFACTURE

1204090 111914



Elliott Equipment Company
 4427 South 76th Circle
 Omaha, NE 68127
 Phone: 402-592-4500
 Fax: 402-592-4553
 Email: sales@elliottequip.com

Built for You.
 www.elliottequip.com

TRACK VEHICLE SPECIFICATIONS

| | 34142 BoomTruck |
|-------------------|------------------------|
| Overall Length | 330" / 838 cm |
| Overall Width | 134" / 340 cm |
| Overall Height | 116" / 295cm |
| Payload Capacity | 40,000 lbs / 18 144 kg |
| Electrical System | 12 Volt |
| Drive System | Hydrostatic |

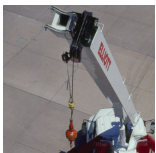
Chassis data is minimum general requirements-not for engineering.
 Actual dimensions and track vehicle data will depend on machine selection and configuration.
 *Minimum chassis weight is required to meet 85% stability requirements.

OPTIONS



Radio Remote Control

Interference protected radio remotes let you get closer to your work and have full control over your machine. Includes battery charging feature and optional LMI screen.



Pin-On Jib Attachment

Two piece telescoping jib that stows on the side of the boom for easy placement while on the job site.



Brush Guard

Heavy-duty steel brush guard prevents tree limbs and other materials from damaging the vehicle or obscuring visibility.



High-Power Recovery Winch

A front mounted recovery winch improves equipment recovery in extreme environments like mud, sand or swamp.



Operator Cab

The optional enclosed crane operator cab includes windshield wipers, intuitive control systems, and optional heating and air conditioning.



Hook Block for Multi-Part Line

Elliott can install up to a 7-part hook block to improve lifting capabilities. The block can stored on the bed for transport.



2-Man Yoke Work Platform

Elliott's new 1,200 lb capacity 2-man platform features a hydraulic yoke lifting system for easy attachment to the boom tip. Fully OSHA compliant and heavy duty.



Body Mounted Hose Reels and Circuits

Let us work with you to customize your tool compatability by adding hose reels or hydraulic circuits to the crane bed.