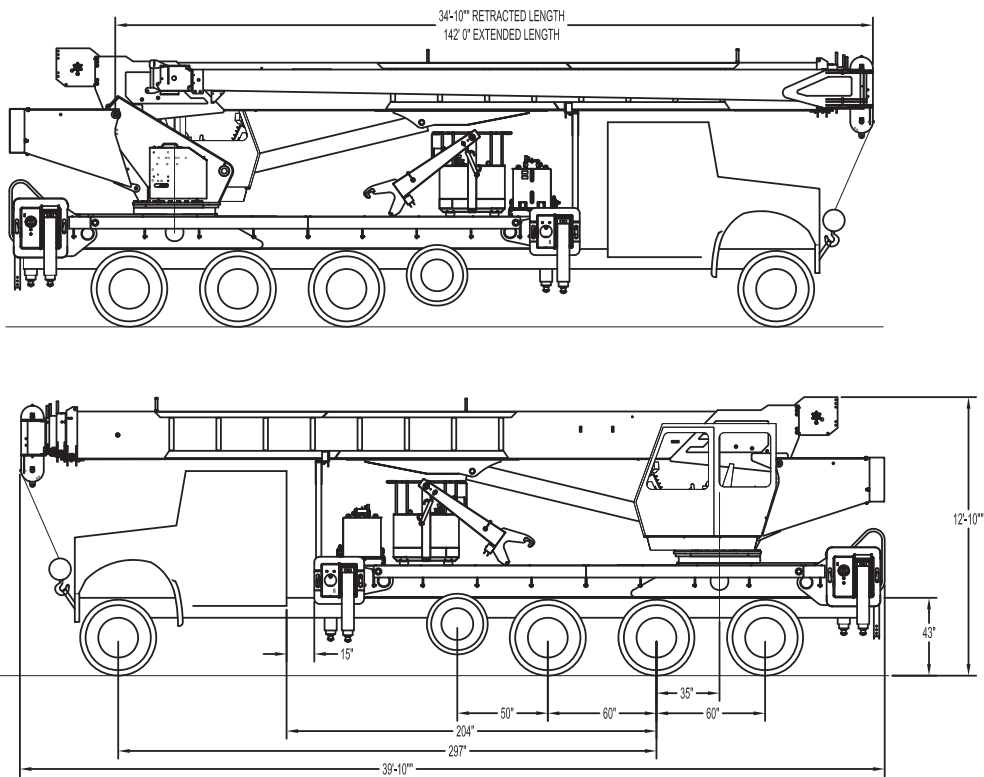




45142 SIDE VIEW DIAGRAM



- | | | | |
|----------------------------------|------------------------|---------------------------------|--------------------------------|
| • Maximum Vertical Reach | 207' / 63,1 m | • Powered Boom Sections | 5 |
| • Working Area | 360 Degrees | • Overall Height | 12'10" / 3,9 m |
| • Lifting Capacity | 90,000 lbs / 40 823 kg | • Operator Controls | Rotating Cab with Control Seat |
| • Boom Length | 142' / 43,3 m | • Outrigger Type Front | Out-Down |
| • Crane Weight (Standard) | 43,800 lbs / 19 867 kg | • Outrigger Spread Front | 21'2" / 6,4 m |
| • Jib Lengths | 32'-55' / 9,7-16,7 m | • Outrigger Type Rear | Out-Down |
| • Winch Bare Drum Pull | 15,000 lbs / 6804 kg | • Outrigger Spread Rear | 26'2" / 8 m |

TECHNICAL SPECIFICATIONS

Crane Capacity: 90,000 lbs at 7' radius.

Maximum Tip Height: 152' tip height (207' with 55' jib).

Control Console: Rotating seated controls with operator cab and deluxe operators seat. Station equipped with four pilot operated control levers for the main crane controls. Operator station includes LMI display, diesel heater, bubble level gauge, engine start/stop switch, signal horn button, variable speed throttle switch, lifting capacity chart, range diagram chart, boom angle indicator, system pressure gauge, 12V DC power source, and cup holder. Independent ground level electric operated outrigger controls.

Boom: Five-section fully proportional, high strength steel plated rectangular tube sections. 34'10" retracted to 142' extended boom. A maximum tip height of 152' mounted on a truck. The boom nose contains one floating upper sheave and three lower sheaves. Assembly includes heavy-duty cylinder fittings, pivot pins, and replaceable wear pads.

Winch: Mounted at the base of the boom for a long fleet angle and flat level spooling of cable. Winch is driven by a planetary reducer and powered by a hydraulic motor. Burst-of-speed winch provides increased line speed. The winch brake is spring applied, pressure release design. Supplied with 430' of 5/8" diameter rotation resistant wire rope with a single line pull of 11,300 lbs. or 12,500 lbs depending on rope type, and a downhaul ball with swivel hook for single part line.

Load Moment Indicator System: System senses hoist cylinder pressures, boom length and boom angle with hydraulic function lockout. The display console is equipped with a bar graph showing crane utilization, boom angle or boom length, a mode select controls for main boom and jib operation, and an anti-two block with an audio/visual warning and shut-off functions to limit

Elliott Equipment Company reserves the right to change the specification of any unit at any time without prior notice. This brochure is only a statement of general specifications on the date of this publication. For more detailed info on specific Elliott trucks go to www.elliottequip.com

hook-boom point contact.

Outriggers: Two sets of out and down overframe outriggers. Front outriggers have a 21'2" span, rear outriggers have a 26'2" span. Outriggers are configured for full span or mid span operation. Outriggers equipped with 22" diameter ball socket aluminum removable pads that stow on vertical outrigger legs.

Frame: Full length, all welded rigid 4-plate design sub-frame. Sub-frame allows for bolt-on addition of aluminum bed wings, with top plate of subbase serving as a portion of the bed deck, to form a three-piece bed.

Turret: Reverse offset turret is one-piece weldment. Turret rotates on large diameter ball bearing.

Rotation: Hydraulic motor drives turret through double reduction planetary swing drive for 360 degree continuous rotation. Glide-swing drive system has manual foot applied brake

Lift: One double-acting long stroke cylinder provides smooth and stable boom elevation. Holding valve prevents boom from falling in event of hose failure.

Boom Extension: Incorporates a 2-stage hydraulic extension cylinder, attached to the largest boom section, with a proportional cable extension system driving the outermost sections.

Hoses: All high pressure hoses are wire braid reinforced with a minimum safety factor of 4 to 1.

Cylinders: All cylinders use microhoned cylinder tubing, chrome shafts, top grade packing and protective rod wipers. Cylinder-mounted holding valves provided on all load-holding cylinders.

Hydraulic System: Equipped with air-shift PTO, piston pump, SAE O-ring face seals on pressure lines, and a 10-micron return line filter. Hydraulic oil cooler. The control valve distributes all flow to hoist system, swing circuit, and

other crane functions. System is closed center type.

Oil Tank Capacity: 119 gallons mounted to top of frame.

Cab Equipment: Air shift PTO with indicator lights installed in truck cab. U/L approved 5:BC dry chemical fire extinguisher installed in truck cab.

Operators Manual & Video: Two CD copies and one hard copy of operation, maintenance, safety and parts manual provided with each unit. Operational and safety video provided at delivery.

Installation: Unit installed on chassis, painted, system and tank filled with oil, tested, inspected, and ready to operate.

Standard Paint: Paint turret and boom white, outriggers red, and bed and boxes black.

Bumper: Bureau of Motor Carrier Safety rear bumper.

Weight: Approximately 43,800 lbs. less truck.

Truck Chassis Required: Approx. 204" C.T., RBM 3,300,000 in-lb. per rail, 20,000 lb. front axle, 66,000 lb. tridem rear axles, and 8,000 lb pusher axle recommended. 94,000 lb. GVWR. Additional configurations available for bridge legal cranes and export. Contact factory when additional equipment is to be added.

Options:

Air Conditioning for Crane Cab.

32'-55' 2-Stage Telescopic Jib.

50-State Federal Bridge Legal Mounting.

Gravity Leveled Work Platform.

Wireless Radio Remote Controls.

Winch Drum Rotation Indicator.

Auxiliary Winch Package.

Work Area Definition (WADS)

Much More...

LOAD CHART - FULL SPAN OUTRIGGERS



MODEL 4500 142-ft BOOM

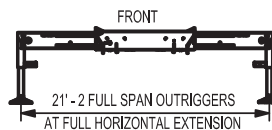
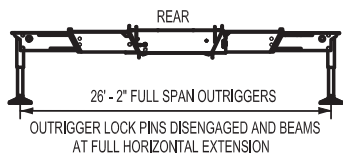
MAIN BOOM LOAD RATINGS WITH FULLY EXTENDED OUTRIGGERS

LMI MODE: NONE

MAIN BOOM LOAD RATINGS

LOAD RATINGS IN lbs WITH OUTRIGGERS AND STABILIZERS EXTENDED

LOAD RADIUS IN FEET	LOADED BOOM ANGLE	34-ft	LOADED BOOM ANGLE	A 47-ft	LOADED BOOM ANGLE	B 61-ft	LOADED BOOM ANGLE	C 74-ft	LOADED BOOM ANGLE	D 88-ft	LOADED BOOM ANGLE	E 101-ft	LOADED BOOM ANGLE	F 115-ft	LOADED BOOM ANGLE	G 128-ft	LOADED BOOM ANGLE	H 142-ft	
7	75.4	90,000																	
8	73.2	80,000																	
10	71.0	66,500	76.7	43,000															
12	67.3	56,100	74.3	43,000	79.1	43,000													
15	61.7	49,000	70.5	43,000	76.3	42,400	79.5	36,600											
20	50.9	38,000	63.6	34,000	71.4	34,000	75.7	31,700	78.7	24,900									
25	38.1	27,600	56.0	27,900	66.3	28,200	71.5	26,400	75.2	21,000	77.8	17,500							
30	19.3	20,450	47.8	20,950	60.6	21,200	67.2	21,450	71.7	18,400	75.0	16,000	77.5	13,400	79.3	11,500			
35			38.0	16,250	54.5	16,500	62.8	16,750	68.1	16,000	72.0	14,400	75.0	11,800	77.0	10,100	79.1	6,600	
40			25.2	12,900	48.0	13,250	58.0	13,450	64.4	13,450	68.8	12,600	72.2	10,700	74.9	8,900	77.0	6,600	
45					40.7	10,850	52.9	11,050	60.6	11,150	65.6	11,250	69.8	9,400	72.6	8,100	74.8	6,600	
50					31.9	8,900	47.3	9,100	56.5	9,200	62.3	9,300	67.0	8,400	70.1	7,400	72.7	5,900	
55					19.8	7,500	41.2	7,600	52.3	7,700	59.1	7,800	64.2	7,500	67.6	6,500	70.5	5,300	
60							34.9	6,300	48.0	6,400	55.5	6,500	61.2	6,700	65.0	5,900	68.3	4,800	
65							26.4	5,200	43.0	5,300	51.8	5,500	58.1	5,500	62.4	5,300	65.9	4,300	
70							12.9	4,250	37.3	4,400	47.6	4,550	55.0	4,550	59.7	4,550	63.6	3,900	
75									30.8	3,600	43.1	3,700	54.6	3,700	56.9	3,800	61.2	3,500	
80									22.5	2,850	38.2	2,950	47.8	3,050	54.0	3,050	58.7	3,100	
85											32.7	2,350	43.8	2,450	50.8	2,600	56.2	2,600	
90											26.1	1,800	39.6	1,950	47.4	2,050	53.5	2,050	
95											17.1	1,350	34.9	1,550	43.8	1,650	50.7	1,650	
100													29.6	1,100	40.0	1,200	47.6	1,250	
105													23.1	450	35.8	950	44.3	950	
110															31.6	450	41.0	450	
0		17,000	0	10,600	0	6,600	0	4,500	0	2,500	0	1,300							
DEDUCTIONS FOR STOWED EXTENDABLE JIB (lbs)		950		700		550		450		400		350		300		250		200	DEDUCTIONS FOR STOWED EXTENDABLE JIB (lbs)



ELLIOTT EQUIPMENT CO. SUPPLIED LOADLINE EQUIPMENT DEDUCTIONS:

- DOWNHAUL WEIGHT.....210 lbs
- ONE SHEAVE BLOCK.....559 lbs
- TWO SHEAVE BLOCK.....643 lbs
- THREE SHEAVE BLOCK.....695 lbs
- FOUR SHEAVE BLOCK.....762 lbs
- AUXILIARY SHEAVE.....100 lbs

CRANE MEETS ASME B30.5 REQUIREMENTS AT TIME OF MANUFACTURE

DO NOT PAINT OVER ANY LABELS 1190860 060613



Elliott Equipment Company
4427 South 76th Circle
Omaha, NE 68127
Phone: 402-592-4500
Fax: 402-592-4553
Email: sales@elliottequip.com

Built for You.
www.elliottequip.com

LOAD CHART - MID-SPAN OUTRIGGERS



MODEL 4500 142-ft BOOM

MAIN BOOM LOAD RATINGS WITH MIDSPAN OUTRIGGERS

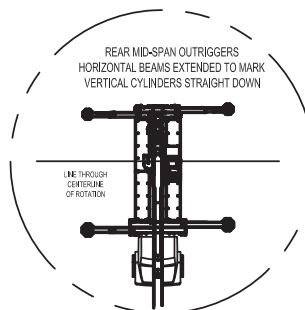
LMI MODE: NONE

LOAD RATINGS IN lbs WITH OUTRIGGERS AND STABILIZERS EXTENDED

LOAD RADIUS IN FEET	LOADED BOOM ANGLE	34-ft	A	47-ft	BOOM ANGLE	B	61-ft	BOOM ANGLE	C	74-ft	BOOM ANGLE	D	88-ft	BOOM ANGLE	E	101-ft	BOOM ANGLE	F	115-ft	BOOM ANGLE	G	128-ft	BOOM ANGLE	H	142-ft
7	75.4	90,000																							
8	73.2	80,000																							
10	71.0	66,500	76.7	43,000																					
12	67.3	56,100	74.3	43,000	79.1	43,000																			
15	61.7	49,000	70.5	43,000	76.3	42,400	79.5	36,600																	
20	50.9	38,000	63.6	34,000	71.4	34,000	75.7	31,700	78.7	24,900															
25	38.1	23,500	56.0	24,000	66.3	25,000	71.5	25,000	75.2	21,000	77.8	17,500													
30	19.3	16,000	47.8	16,000	60.6	16,000	67.2	16,000	71.7	18,400	75.0	16,000	77.5	13,400	79.3	11,500									
35			38.0	12,000	54.5	12,000	62.8	13,300	68.1	14,000	72.0	14,400	75.0	11,800	77.0	10,100	79.1	6,600							
40			25.2	9,700	48.0	10,000	58.0	10,500	64.4	11,000	68.8	11,000	72.2	10,700	74.9	8,900	77.0	6,600							
45					40.7	8,000	52.9	8,400	60.6	8,400	65.6	8,500	69.8	8,500	72.6	8,000	74.8	6,600							
50					31.9	6,500	47.3	6,800	56.5	6,900	62.3	6,900	67.0	7,000	70.1	7,000	72.7	5,900							
55					19.8	5,100	41.2	5,300	52.3	5,400	59.1	5,500	64.2	5,600	67.6	5,700	70.5	5,000							
60							34.9	4,200	48.0	4,300	55.5	4,400	61.2	4,400	65.0	4,500	68.3	4,500							
65							26.4	3,300	43.0	3,400	51.8	3,500	58.1	3,500	62.4	3,600	65.9	3,600							
70							12.9	2,500	37.3	2,600	47.6	2,700	55.0	2,800	59.7	2,900	63.6	2,900							
75									30.8	1,900	43.1	2,000	54.6	2,100	56.9	2,200	61.2	2,200							
80									22.5	1,300	38.2	1,300	47.8	1,400	54.0	1,400	58.7	1,500							
85											32.7	1,000	43.8	1,000	50.8	1,000	56.2	1,000							
0		15,000	0	8,000	0	4,000	0	1,000																	
DEDUCTIONS FOR STOWED EXTENDABLE JIB (lbs)		950		700		550		450		400		350		300		250		200							DEDUCTIONS FOR STOWED EXTENDABLE JIB (lbs)

NOTE:

- Operate jib by radius when main boom is fully extended. Increase boom angle if necessary to maintain load radius.
- When boom is retracted, operate jib by boom angles. Do not exceed any rated jib capacities at reduced boom lengths.
- Do not exceed capacities recommended by ASME/ANSI B30.5.
- Load ratings above bold line are structurally limited.
- Personnel handling is allowed only with full span outriggers.
- Boom load ratings are based on loaded boom radius. Loaded boom angles are given as reference only.



ELLIOTT EQUIPMENT CO. SUPPLIED LOADLINE EQUIPMENT DEDUCTIONS:

- DOWNHAUL WEIGHT.....210 lbs
- ONE SHEAVE BLOCK.....559 lbs
- TWO SHEAVE BLOCK.....643 lbs
- THREE SHEAVE BLOCK.....695 lbs
- FOUR SHEAVE BLOCK.....762 lbs
- AUXILIARY SHEAVE.....100 lbs

CRANE MEETS ASME B30.5 REQUIREMENTS AT TIME OF MANUFACTURE

DO NOT PAINT OVER ANY LABELS

1190860 060613



Elliott Equipment Company
4427 South 76th Circle
Omaha, NE 68127
Phone: 402-592-4500
Fax: 402-592-4553
Email: sales@elliottequip.com

Built for You.
www.elliottequip.com

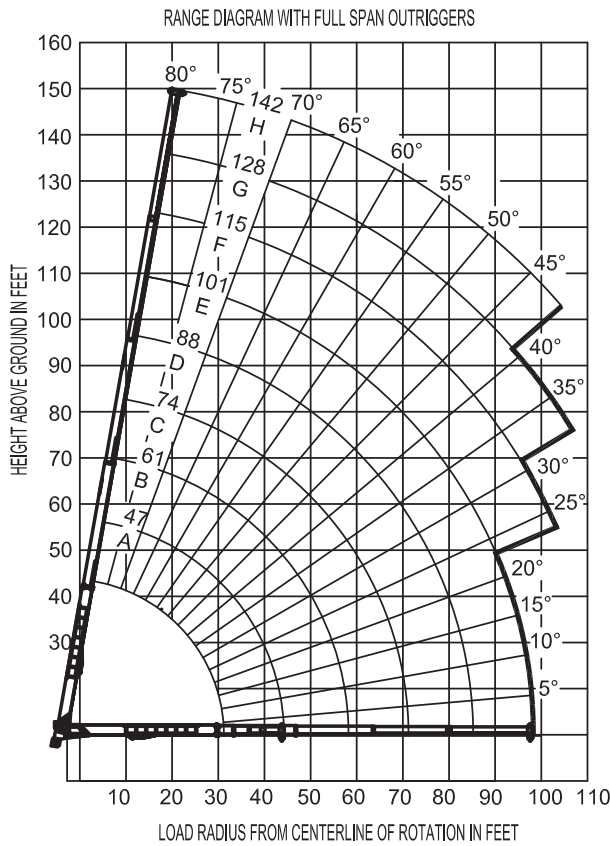
RANGE CHART - FULL SPAN OUTRIGGERS



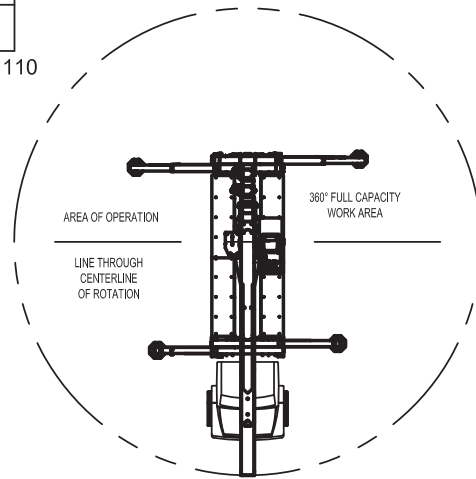
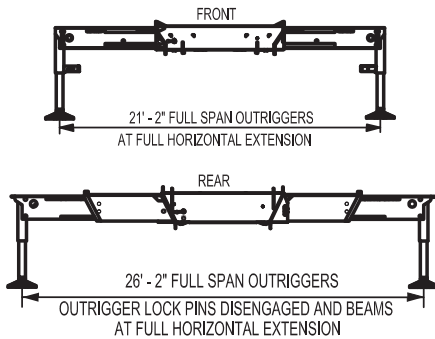
MODEL 4500 142-ft BOOM

RANGE DIAGRAM WITH FULLY EXTENDED OUTRIGGERS

LMI MODE: NONE



- NOTE:
1. Operate jib by radius when main boom is fully extended. Increase boom angle if necessary to maintain load radius.
 2. When boom is retracted, operate jib by boom angles. Do not exceed any rated jib capacities at reduced boom lengths.
 3. Capacities do not exceed 85% stability.
 4. Load ratings above bold line are structurally limited.
 5. Personnel handling is allowed only with full span outriggers.
 6. Boom load ratings are based on loaded boom radius. Loaded boom angles are given as reference only.



CRANE MEETS ASME B30.5 REQUIREMENTS AT TIME OF MANUFACTURE

DO NOT PAINT OVER ANY LABELS 1190860 060613

JIB CHART - FULL-SPAN OUTRIGGERS, 32'-55' TWO SECTION JIB



MODEL 4500

142-ft BOOM

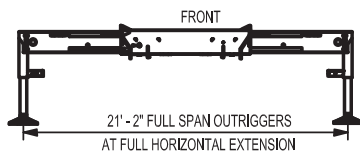
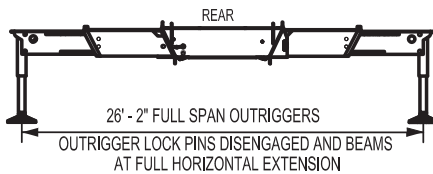
JIB LOAD RATINGS WITH FULLY EXTENDED OUTRIGGERS

LMI MODE: 31'RET & 55'EXT

31'-55' TWO SECTION JIB

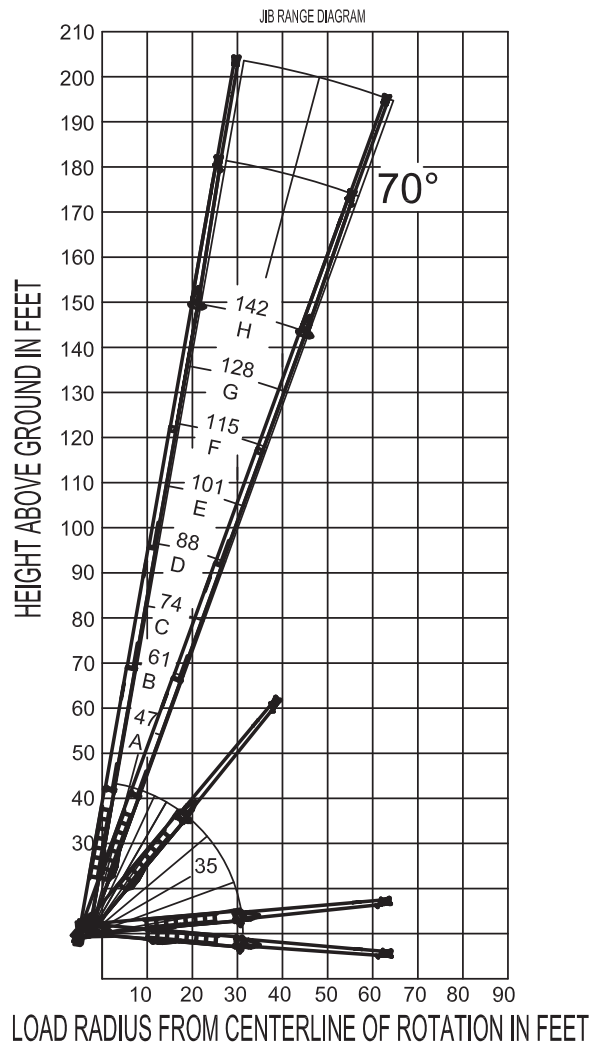
LOAD RADIUS IN FEET	LOADED BOOM ANGLE	31-ft JIB 360°	LOAD RADIUS IN FEET	LOADED BOOM ANGLE	55-ft JIB 360°
33	80	3,600	40	80	2,400
50	75	3,600	59	75	2,400
65	70	1,200	76	70	800
LMI MODE: 31'RET			LMI MODE: 55'EXT		

DO NOT OPERATE JIB IN WINDS EXCEEDING 15MPH



NOTE:

1. Operate jib by radius when main boom is fully extended. Increase boom angle if necessary to maintain load radius.
2. When boom is retracted, operate jib by boom angles. Do not exceed any rated jib capacities at reduced boom lengths.
3. Do not exceed capacities recommended by ASME/ANSI B30.5.
4. Load ratings above bold line are structurally limited.
5. Personnel handling is allowed only with full span outriggers.
6. Boom load ratings are based on loaded boom radius. Loaded boom angles are given as reference only.



CRANE MEETS ASME B30.5 REQUIREMENTS AT TIME OF MANUFACTURE

DO NOT PAINT OVER ANY LABELS

1190860 060613

RANGE CHART - JIB & 2-MAN BASKET 600 LB / 272 KG CAPACITY



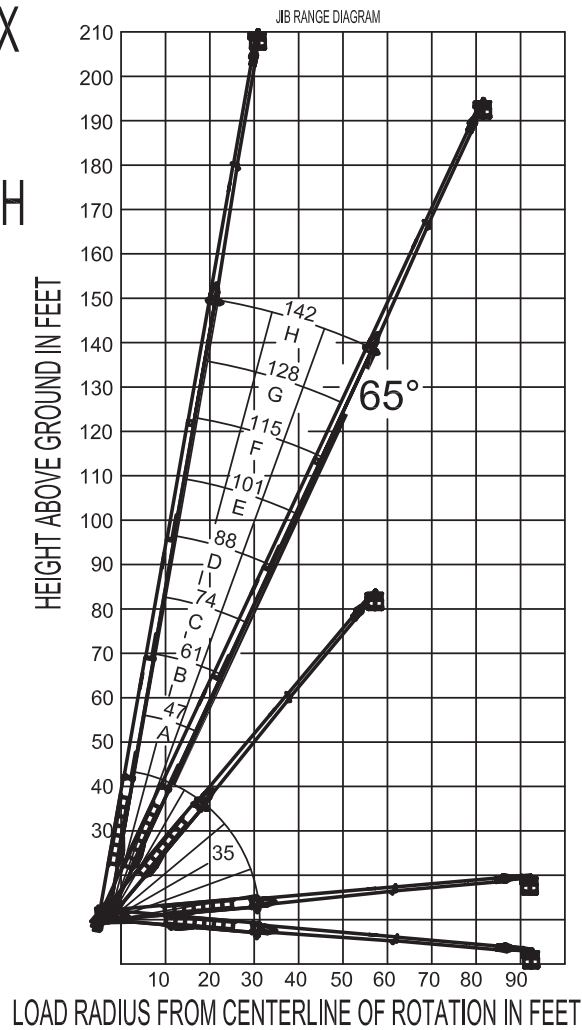
MODEL 4500

142-ft BOOM

2 PIECE FULLY EXTENDED JIB RANGE DIAGRAM WITH PLATFORM ATTACHED

LMI MODE: BSKT1_55'

PERSONNEL 600LBS MAX
DO NOT OPERATE JIB IN WINDS EXCEEDING 15MPH
USE OUTRIGGERS AT ALL TIMES



NOTE:

1. Operate jib by radius when main boom is fully extended. Increase boom angle if necessary to maintain load radius.
2. When boom is retracted, operate jib by boom angles. Do not exceed any rated jib capacities at reduced boom lengths.
3. Do not exceed capacities recommended by ASME/ANSI B30.5.
4. Load ratings above bold line are structurally limited.
5. Personnel handling is allowed only with full span outriggers.
6. Boom load ratings are based on loaded boom radius. Loaded boom angles are given as reference only.

CRANE MEETS ASME B30.5 REQUIREMENTS AT TIME OF MANUFACTURE

DO NOT PAINT OVER ANY LABELS

1190860 060613



Elliott Equipment Company
 4427 South 76th Circle
 Omaha, NE 68127
 Phone: 402-592-4500
 Fax: 402-592-4553
 Email: sales@elliottequip.com

Built for You.
www.elliottequip.com

RANGE CHART - JIB & 2-MAN BASKET 1,200 LB / 544 KG CAPACITY



MODEL 4500

142-ft BOOM

2 PIECE FULLY EXTENDED JIB RANGE DIAGRAM WITH PLATFORM ATTACHED

LMI MODE: BSKT2_55'

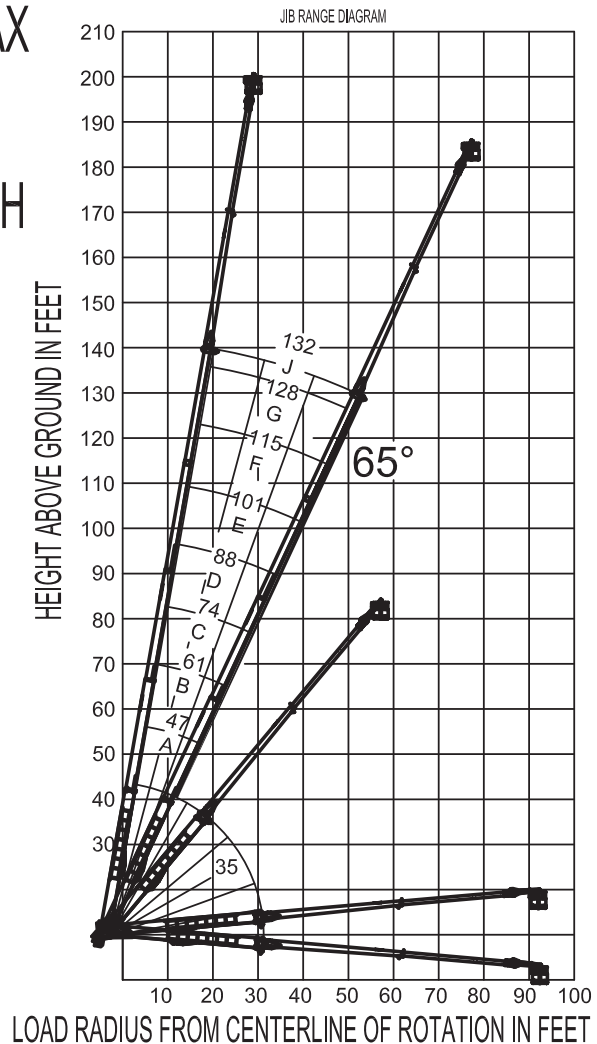
PERSONNEL 1200LBS MAX

DO NOT OPERATE JIB IN WINDS EXCEEDING 15MPH

USE OUTRIGGERS AT ALL TIMES

NOTE:

1. Operate jib by radius when main boom is fully extended.
Increase boom angle if necessary to maintain load radius.
2. When boom is retracted, operate jib by boom angles.
Do not exceed any rated jib capacities at reduced boom lengths.
3. Do not exceed capacities recommended by ASME/ANSI B30.5.
4. Load ratings above bold line are structurally limited.
5. Personnel handling is allowed only with full span outriggers.
6. Boom load ratings are based on loaded boom radius.
Loaded boom angles are given as reference only.



CRANE MEETS ASME B30.5 REQUIREMENTS AT TIME OF MANUFACTURE

DO NOT PAINT OVER ANY LABELS

1190860 060613



Elliott Equipment Company
4427 South 76th Circle
Omaha, NE 68127
Phone: 402-592-4500
Fax: 402-592-4553
Email: sales@elliottequip.com

Built for You.
www.elliottequip.com

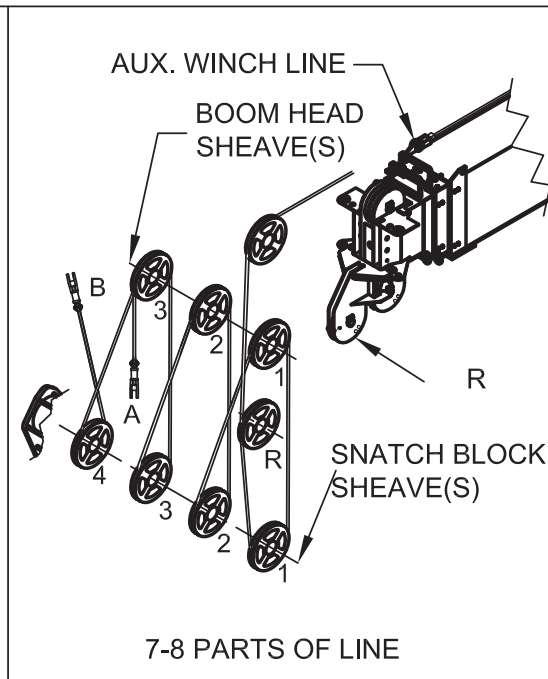
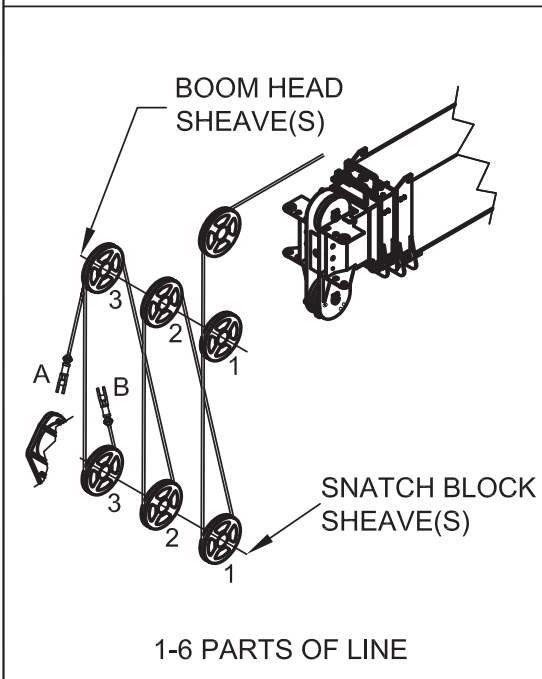
MAIN BOOM WINCH DATA



MODEL 4500

142-ft BOOM

PARTS OF LINE



NOTICE:

- DO NOT DEADHEAD LINE BLOCK AGAINST BOOM TIP WHEN EXTENDING BOOM.
- KEEP AT LEAST 5 WRAPS OF LOADLINE ON THE WINCH DRUM AT ALL TIMES.
- USE ONLY 5/8" DIAMETER WIRE ROPE, AS SPECIFIED, WITH THE PROPER BREAKING STRENGTH LISTED.
- ANTI-TWO-BLOCK SYSTEM MUST BE IN GOOD OPERATING CONDITION BEFORE OPERATING CRANE. SEE OPERATION & SAFETY MANUAL.

PARTS OF LINE	SHEAVE(S) ON BOOM HEAD	SHEAVE(S) ON SNATCH BLOCK	5/8" - SPIN RESISTANT (5:1 S.F.) 56,500-lbs. BREAKING STRENGTH	5/8" - 6X36 IWRC (3.5:1 S.F.) 45,400-lbs. BREAKING STRENGTH
1	1	A	11,300 lbs	12,500 lbs
2	1 B	1	22,600 lbs	25,000 lbs
3	1 2	1 A	33,900 lbs	37,500 lbs
4	1 2 B	1 2	45,200 lbs	50,000 lbs
5	1 2 3	1 2 A	56,500 lbs	62,500 lbs
6	1 2 3 B	1 2 3	67,800 lbs	75,000 lbs
7	R 1 2 3	1 2 3 A	79,100 lbs	87,500 lbs
8	R 1 2 3 B	1 2 3 4	90,000 lbs	90,000 lbs

A-DEAD END FOR ODD PARTS OF LINE
 B-DEAD END FOR EVEN PARTS OF LINE
 R-ROOSTER SHEAVE REQUIRED WHEN USING 7 AND 8 PARTS OF LINE

CRANE MEETS ASME B30.5 REQUIREMENTS AT TIME OF MANUFACTURE

DO NOT PAINT OVER ANY LABELS

1190860 060613



Elliott Equipment Company
 4427 South 76th Circle
 Omaha, NE 68127
 Phone: 402-592-4500
 Fax: 402-592-4553
 Email: sales@elliottequip.com

Built for You.
www.elliottequip.com

TRUCK CHASSIS SPECIFICATIONS

	45142 BoomTruck
Wheelbase (WB)	297" / 754 cm
Cab to Trunnion (CT)	204" / 518 cm
Frame Section Modulus	30.0 in ³ - 110,000 psi / 758 428 kPa
Front Axle Gross Weight Rating	20,000 lb / 9072 kg
Rear Axle Gross Weight Rating	66,000 lb / 31 298 kg
Pusher Axle Rating	8,000 lb / 3629 kg
Permit-Free Truck Configurations	Contact Factory for More Information

Chassis data is minimum general requirements-not for engineering.
 Actual dimensions and truck data will depend on truck selection and axle configuration.
 *Minimum chassis weight is required to meet 85% stability requirements.

OPTIONS



Radio Remote Control

Interference protected radio remotes let you get closer to your work and have full control over your machine. Optional LMI display is available.



Bridge-Legal in All 50 States

In partnership with chassis manufacturers, Elliott Equipment is proud to offer a federal bridge-legal version of the 45142 in all 50 US states. Contact us to learn more.



Air Conditioning in Crane Cab

Work all day in comfort with an high efficiency air conditioning system mounted on the rear of the crane control cab.



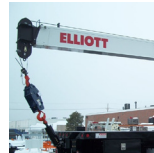
Dual Winch System & Drum Indicators

Take advantage of Elliott's auxiliary dual 10,000 lb single line pull winch package with optional winch drum rotation indicators.



Tool Boxes

Optional tool boxes and bed storage can accommodate any storage need for tools, work materials and more.



Hook Block for Multi-Part Line

Elliott can include a hook block for up to 8 parts of line to improve lifting capabilities and allow you to maximize your use of the crane.



2-Man Yoke Work Platform

Elliott's new 1,200 lb capacity 2-man platform features a hydraulic yoke lifting system for easy attachment to the boom tip. Fully OSHA compliant and heavy duty.



Body Mounted Hose Reels and Circuits

Let us work with you to customize your tool compatability by adding hose reels or hydraulic circuits to the crane bed.