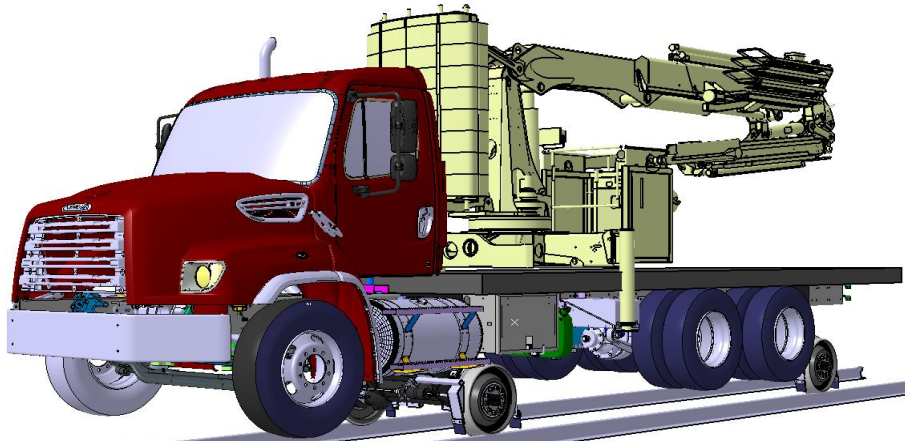


## FD Underbridge

### Road- rail underbridge truck



## Under Bridge Access

### OPERATIONS

- Control boom and *Creep Drive* from workman basket
- Automatic basket levelling

### BOOM REACH

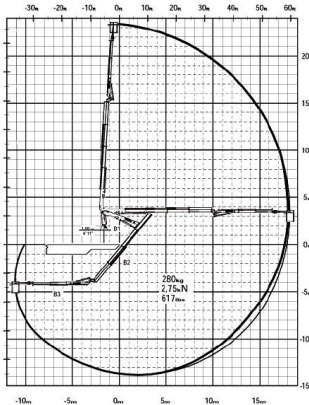
- Maximum working height 23,5m
- Maximum horizontal reach underneath bridge 11m
- Maximum working depth below road/rail level 14,5m

### HYDROSTATIC RAIL GEAR RELIABILITY

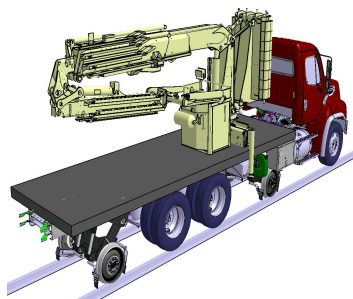
- Low derailment risks
- Much more effective in bad weather conditions
- Excellent reliability and low maintenance

### BI-DIRECTIONAL

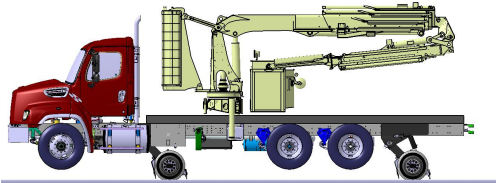
- Track speed from 5km/h (3 mph) to 40km/h (25 mph)



Typical chart



**TURNKEY SOLUTION**  
 Contact us for details



### Truck Chassis

- Multiple brands available
- WESTERN STAR / INTER / MACK / FREIGHTLINER

### Truck Body

- Rear access gate
- Side access ladder
- Multiple aluminum storages
- Stabilizers for road operations

### Boom

- Length of boom no.1 4,15m (optional 5.55m)
- Boom no.2 three hydraulic extensions
- Boom no.3 three hydraulic extensions
- Automatic basket levelling
- Load capacity 617 lbs (280kg)
- Manual control at main rotating column
- Radio remote control in workman basket

### Railgear

- NEOTEC hydrostatic axle
- 23" wheel diameter
- Speed on track up to 40 km/h (25mph)
- Radio remote control in workman basket for *Creep drive*

### Hitch

- 40 Ton Pintle Hitch & trailer socket

### Other equipments

- Standard railway security equipments
- Day-night back-up camera
- Radio communication plugin ready

### Options

- Generator and electric power to basket
- 5-10 gallons hydraulic port & 50' hose and roller

