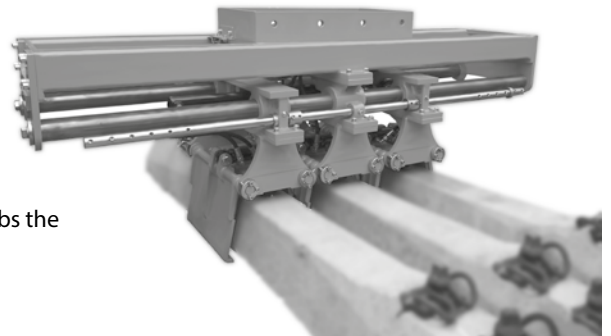


# RUS

# Sleeper Layer for Use on a Tiltrotator

With the Sleeper Layer RUS mounted to a tiltrotator or similar, concrete sleepers can be taken at their center and then be moved easily and effectively – for road rail excavators from 12 - 24 t / 26500 - 52800 lbs) operating weight.

- **Low weight.**
- **Efficiency:** several concrete sleepers are clamped together at their center at the same time by hydraulic grippers and then layed into the ballast bed. This saves time compared to placing sleepers individually.
- **Safety:** a special holding valve provides a safe grip – even if pressure drops.
- **Variable gripping range:** the position of the traversing arms can vary within the specified range.
- **Longevity:** traversing arms are made of HARDOX quality steel.
- **Flexibility:** suitable for nearly all types of waisted sleepers.
- **For narrow areas** close to sidetracks and foundations, as the layer grabs the sleepers in the center.
- **Optional:** extension for positioning sleepers beneath existing rails.



### Sleeper Layer RUS

Type	Gripping range A min. - max. (mm / in)	Weight approx. (kg / lbs)	Length B (mm / in)	Height C (mm / in)	Width E approx. (mm / in)	Number of sleepers max. (pieces)	max. Weight per sleeper (kg / lbs)	Operating weight (t / lbs)
RUS 03	150 – 330 / 5.91 - 12.99	480 / 1056	1890 / 74.41	1290 / 50.79	580 / 22.83	3	340 / 748	12 - 24 / 26500 - 52800
RUS 04	150 – 330 / 5.91 - 12.99	570 / 1254	2250 / 100.93	1290 / 50.79	580 / 22.83	4	340 / 748	12 - 24 / 26500 - 52800
RUS 06	150 – 330 / 5.91 - 12.99	750 / 1650	3400 / 133.86	1290 / 50.79	580 / 22.83	6	340 / 748	12 - 24 / 26500 - 52800

Package consists of: sleeper layer, bolt-on coupling

### Requirements of Excavator

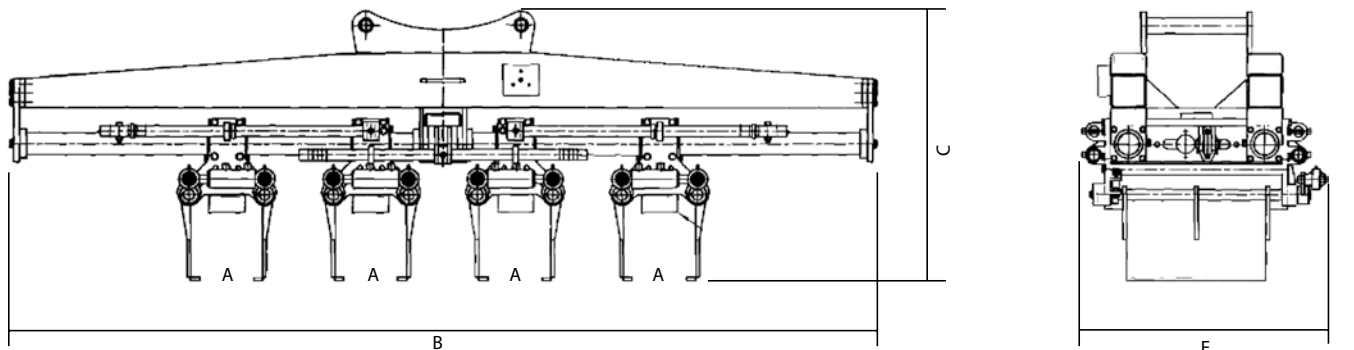
Two hydraulics circuit or one hydraulic circuit plus one solenoid valve needed

Operating pressure: **max. 20 MPa (200 bar) / 2880 psi**

Pump capacity: 30 - 60 l/min / 7.93 - 15.85 GPM

Different couplings available

### Technical Drawings – Examples of Use



**Sleeper layer RUS:**  
clamps (in their center)  
and lays several  
**concrete sleepers** in  
equal distances

