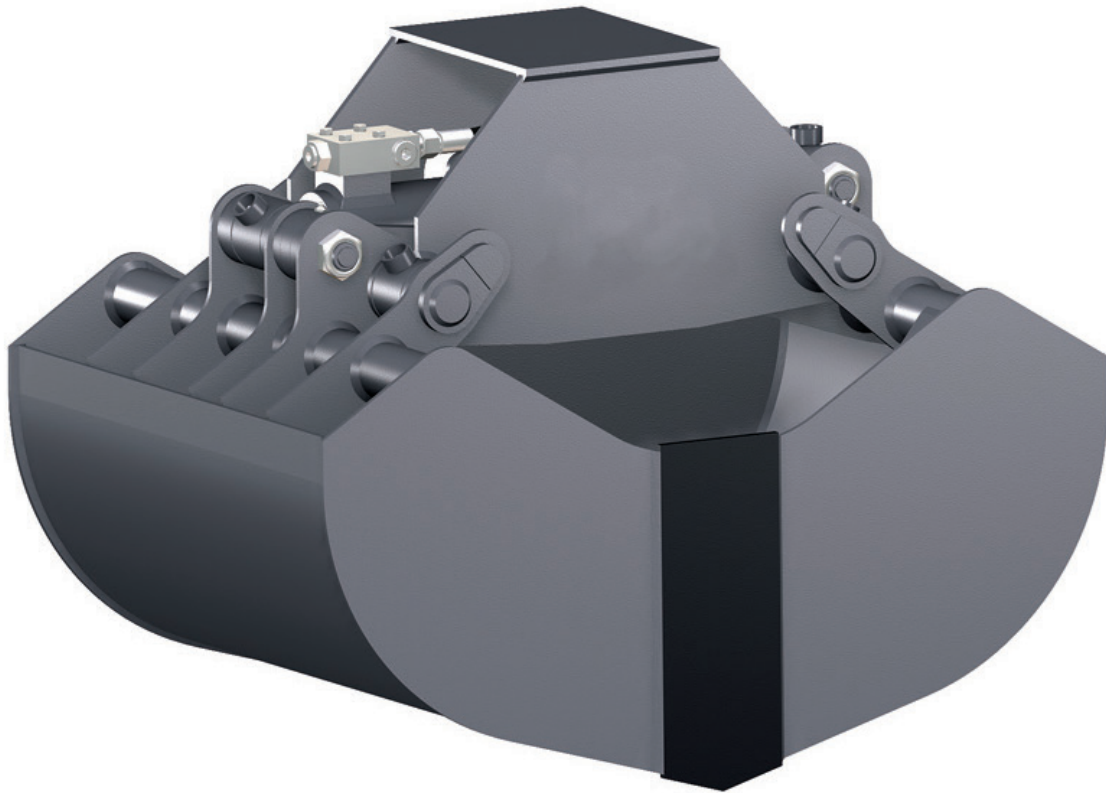


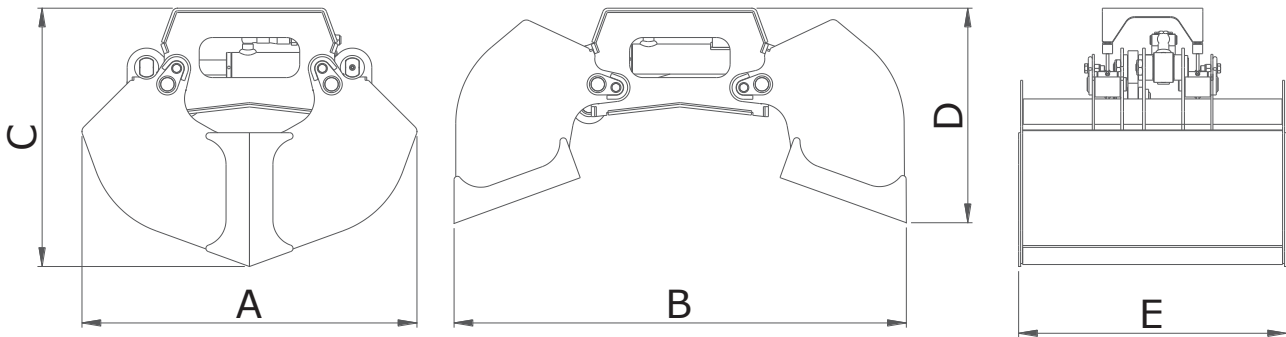
## Railroad Truck-Crane Buckets

The Moley Railroad Truck-Crane Buckets are designed to endure the toughest jobs. The structure of the body and the shape of the valves allow the bucket to contain the maximum dimensions. Best used to deposit/remove crushed stones from tracks.



- 24-Month Warranty
- 0.14 - 0.65 yd<sup>3</sup> Capacity
- Safety Holding Valve
- Hardened Shaft
- Wear Resistant Blade
- Hardox 400 Construction
- 360° Rotation Available
- Fully Protected Cylinder

## Railroad Truck-Crane Buckets (Con't)



MODEL	CAPACITY	WEIGHT	TEETH	CYLINDERS	SIZES (in.)				
	YD <sup>3</sup>	LBS	N	N	A	B	C	D	E
MBO 11	0.14	419	1	3	39	53	31	25	15
MBO 20	0.26	507	1	5	39	53	31	25	26
MBO 25	0.32	551	1	5	39	53	31	25	33
MBO 30	0.39	661	1	5	47	59	34	26	31
MBO 40	0.52	750	1	7	47	59	34	26	41
MBO 50	0.65	838	1	7	47	59	34	26	51

MODEL	LOAD CAPACITY	FORCE	PRESSURE		REC OILFLOW		TEMPS		MACHINE	TRUCK CRANE
	TONS	TONS	PSI		G/MIN		SEC		TONS	TONS
			CLOSE	OPEN	CLOSE	OPEN	CLOSE	OPEN		
MBO 11	1.7	1.8	4,061	3,626	8	8	1.5	1	4-8	3-11
MBO 20	1.7	1.8	4,061	3,626	8	8	1.5	1	4-8	7-13
MBO 25	1.7	1.8	4,061	3,626	8	8	1.5	1	7-11	7-13
MBO 30	1.7	1.3	4,061	3,626	8	8	1.5	1	7-11	9-13
MBO 40	1.7	1.3	4,061	3,626	8	8	1.5	1	7-11	9-13
MBO 50	1.7	1.3	4,061	3,626	8	8	1.5	1	7-11	9-13