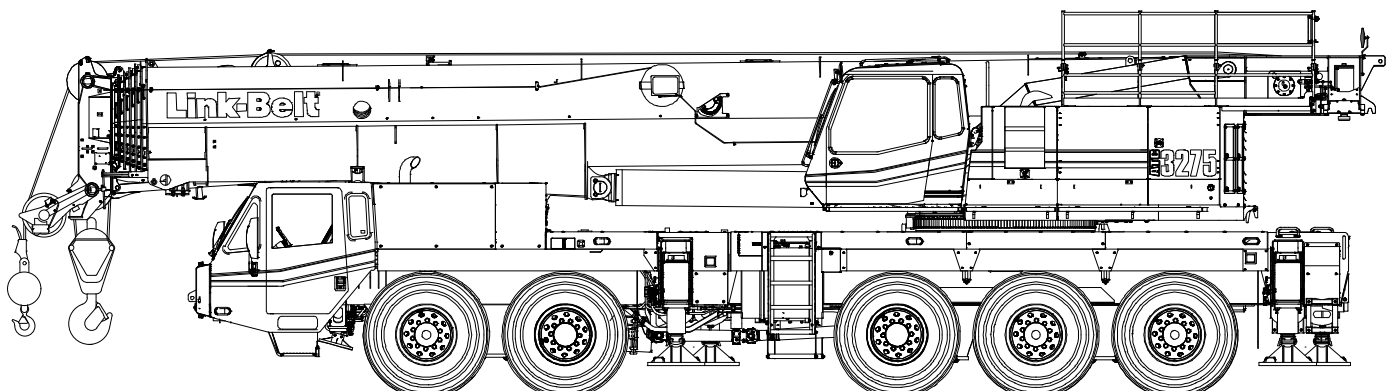


Technical Data

Specifications & Capacities

ATC 3275

Telescopic Boom All Terrain Crane
275 US ton
250 metric ton



CAUTION: This material is supplied for reference use only. Operator must refer to in-cab Crane Rating Manual and Operator's Manual to determine allowable crane lifting capacities and assembly and operating procedures.

Table Of Contents

| | |
|---|-----------|
| Boom, Attachments, and Upper Structure | 1 |
| Boom | 1 |
| Boom | 1 |
| Boom Wear Pads | 1 |
| Boom Head | 1 |
| Boom Elevation | 1 |
| Auxiliary Lifting Sheave – Optional | 1 |
| Heavy Duty Lifting Sheave Package – Optional | 1 |
| Hook Blocks and Balls – Optional | 1 |
| Fly – Optional | 1 |
| Fly Extensions – Optional | 2 |
| Upper Operator’s Cab and Controls | 2 |
| Swing | 3 |
| Central Lubrication System | 3 |
| Electrical | 3 |
| Hydraulic System | 3 |
| Pump Drive | 4 |
| Fuel Tank | 4 |
| Engine | 4 |
| Load Hoist System | 5 |
| Load Hoist Performance | 5 |
| 2M Main (Front) and Optional Auxiliary (Rear) Winches | 5 |
| Counterweight | 5 |
| Carrier | 7 |
| General | 7 |
| Outriggers | 7 |
| Steering and Axles | 7 |
| Suspension | 7 |
| Ground Control Outrigger/Suspension Controls | 7 |
| Tires and Wheels | 8 |
| Brakes | 8 |
| Central Lubrication System | 8 |
| Electrical | 8 |
| Transmission | 8 |
| Fuel Tank | 8 |
| Engine | 8 |
| Hydraulic System | 8 |
| Pump Drive | 8 |
| Carrier Speeds and Gradeability | 9 |
| Lower Cab and Controls | 10 |
| Additional Equipment | 11 |
| Axle Loads – English | 12 |
| Axle Loads – Metric | 13 |
| Axle Loads with 2–Axle or 3–Axle Boom Dolly(3rd Axle Down) – English | 14 |
| Axle Loads with 2–Axle or 3–Axle Boom Dolly(3rd Axle Down) – Metric | 15 |
| General Dimensions | 16 |
| Boom Extend Modes | 17 |

| | |
|--|-----------|
| Working Range Diagram – Main Boom | 18 |
| Main Boom Lift Capacity Charts – Standard | 19 |
| 0 lb Counterweight - Fully Extended Outriggers - 360° Rotation | 19 |
| 36,000 lb Counterweight - Fully Extended Outriggers - 360° Rotation | 20 |
| Main Boom Lift Capacity Charts – Optional | 21 |
| 80,000 lb Counterweight - Fully Extended Outriggers - 360° Rotation | 21 |
| 102,000 lb Counterweight - Fully Extended Outriggers - 360° Rotation | 22 |
| 156,500 lb Counterweight - Fully Extended Outriggers - 360° Rotation | 23 |
| Working Range Diagram – Main Boom + Fly | 24 |
| Manual & Hydraulic Offset Fly Attachment Lift Capacity Charts – Optional | 25 |
| 36,000 lb Counterweight - Fully Extended Outriggers - 360° Rotation | 25 |
| Main Boom + 12 ft Offset Fly (Manual Offsets 2°, 15°, 30°, 45° & Hydraulic Offsets 2° - 45°) | 25 |
| 156,500 lb Counterweight - Fully Extended Outriggers - 360° Rotation | 26 |
| Main Boom + 12 ft Offset Fly (Manual Offsets 2°, 15°, 30°, 45° & Hydraulic Offsets 2° - 45°) | 26 |
| Manual Offset Fly Attachment Lift Capacity Charts – Optional | 27 |
| 36,000 lb Counterweight - Fully Extended Outriggers - 360° Rotation | 27 |
| 223 ft Main Boom Length + 40 ft & 67 ft Manual Offset Fly (2°, 15°, 30°, 45° Offsets) | 27 |
| 156,500 lb Counterweight - Fully Extended Outriggers - 360° Rotation | 28 |
| 223 ft Main Boom Length + 40 ft & 67 ft Manual Offset Fly (2°, 15°, 30°, 45° Offsets) | 28 |
| 223 ft Main Boom Length + 92 ft & 117 ft Manual Offset Fly (2°, 15°, 30°, 45° Offsets) | 29 |
| Hydraulic Offset Fly Attachment Lift Capacity Charts – Optional | 30 |
| 36,000 lb Counterweight - Fully Extended Outriggers - 360° Rotation | 30 |
| 223 ft Main Boom Length + 40 ft & 67 ft Hydraulic Offset Fly (2°–45° Offsets) | 30 |
| 156,500 lb Counterweight - Fully Extended Outriggers - 360° Rotation | 31 |
| 223 ft Main Boom Length + 40 ft & 67 ft Hydraulic Offset Fly (2°–45° Offsets) | 31 |
| 223 ft Main Boom Length + 92 ft & 117 ft Hydraulic Offset Fly (2°–45° Offsets) | 32 |
| Metric Main Boom Lift Capacity Charts | 33 |
| 0t Counterweight - Fully Extended Outriggers - 360° Rotation | 33 |
| 16.3t Counterweight - Fully Extended Outriggers - 360° Rotation | 34 |
| Metric Main Boom Lift Capacity Charts – Optional | 35 |
| 36.3t Counterweight - Fully Extended Outriggers - 360° Rotation | 35 |
| 46.3t Counterweight - Fully Extended Outriggers - 360° Rotation | 36 |
| 71.0t Counterweight - Fully Extended Outriggers - 360° Rotation | 37 |
| Metric Manual & Hydraulic Offset Fly Attachment Lift Capacity Charts – Optional | 38 |
| 16.3t Counterweight - Fully Extended Outriggers - 360° Rotation | 38 |
| Main Boom + 3.6m Offset Fly (Manual Offsets 2°, 15°, 30°, 45° & Hydraulic Offsets 2° - 45°) | 38 |
| 71.0t Counterweight - Fully Extended Outriggers - 360° Rotation | 39 |
| Main Boom + 3.6m Offset Fly (Manual Offsets 2°, 15°, 30°, 45° & Hydraulic Offsets 2° - 45°) | 39 |
| Metric Manual Offset Fly Attachment Lift Capacity Charts – Optional | 40 |
| 16.3t Counterweight - Fully Extended Outriggers - 360° Rotation | 40 |
| 68m Main Boom Length + 12.2m & 20.4m Manual Offset Fly (2°, 15°, 30°, 45° Offsets) | 40 |
| 71.0t Counterweight - Fully Extended Outriggers - 360° Rotation | 41 |
| 68m Main Boom Length + 12.2m & 20.4m Manual Offset Fly (2°, 15°, 30°, 45° Offsets) | 41 |
| 68m Main Boom Length + 28m & 35.7m Manual Offset Fly (2°, 15°, 30°, 45° Offsets) | 42 |
| Metric Hydraulic Offset Fly Attachment Lift Capacity Charts – Optional | 43 |
| 16.3t Counterweight - Fully Extended Outriggers - 360° Rotation | 43 |
| 68m Main Boom Length + 12.2m & 20.4m Hydraulic Offset Fly (2°–45° Offsets) | 43 |
| 71.0t Counterweight - Fully Extended Outriggers - 360° Rotation | 44 |
| 68m Main Boom Length + 12.2m & 20.4m Hydraulic Offset Fly (2°–45° Offsets) | 44 |
| 68m Main Boom Length + 28m & 35.7m Hydraulic Offset Fly (2°–45° Offsets) | 45 |

Boom, Attachments, and Upper Structure

■ Boom

Design — Seven section, formed construction of extra high tensile steel consisting of one base section and six telescoping sections. The two plate design of each section has multiple longitudinal bends for superior strength. Each telescoping section extends independently by means of one double – action, single stage hydraulic cylinder with integral holding valves.

Boom

- 43.7 – 223 ft (13.3 – 68m) seven section boom
- Integral boom dolly connection
- Boom removal quick disconnects
- Three pinned positions of 0%, 50%, and 100% on each boom section
- Mechanical boom angle indicator
- Wind speed indicator
- Eight boom extend modes (EM1 – EM8), controlled from the operator's cab, provide superior capacities by varying the extension of the telescoping sections:
 - EM1 extends to 223 ft (68m)
 - EM2 extends to 209.3 ft (63.8m)
 - EM3 extends to 177.5 ft (54.1m)
 - EM4 extends to 163.3 ft (49.8m)
 - EM5 extends to 133.4 ft (40.6m)
 - EM6 extends to 135.9 ft (41.4m)
 - EM7 extends to 105.4 ft (32.1m)
 - EM8 extends to 90.7 ft (27.6m)
- Maximum tip height for each extend mode is:
 - EM1 is 234.1 ft (71.3m)
 - EM2 is 220.5 ft (67.2m)
 - EM3 is 188.9 ft (57.6m)
 - EM4 is 174.8 ft (53.3m)
 - EM5 is 145.1 ft (44.2m)
 - EM6 is 147.6 ft (45.0m)
 - EM7 is 117.4 ft (35.8m)
 - EM8 is 102.8 ft (31.3m)

Boom Wear Pads

- Wear pads with Teflon inserts that self – lubricate the boom sections, inserts are universal for the boom.
- Bottom rear wear pads are universal for all boom sections.
- Top front wear pads are universal for all boom sections
- Top rear wear pads are common for T3, T4, T5, and T6 boom sections
- Top rear wear pads are common for T1 and T2 boom sections

Boom Head

- Seven 16.53 in (41.99cm) root diameter nylon sheaves to handle up to 16 parts of line with auxiliary lifting sheave
- Easily removable wire rope guards
- Rope dead end lugs on either side of the boom head
- Boom head is designed for quick–reeve of the hook block

Boom Elevation

- One double acting hydraulic cylinder with integral holding valve
- Boom elevation: -1.5° to 83°

Auxiliary Lifting Sheave – Optional

- Single 16.53 in (41.99cm) root diameter nylon sheave
- Easily removable wire rope guards
- Does not affect erection of the fly or use of the main head sheaves
- Can be stored on right side of the boom without removal

Heavy Duty Lifting Sheave Package – Optional

- Six 16.53 in (41.99cm) root diameter nylon sheaves
- Easily removable wire rope guards
- Necessary to achieve greater than 16 parts of line

Hook Blocks and Balls – Optional

- 40 ton (36.3mt) 1 sheave quick–reeve hook block with safety latch
- 66 ton (60mt) 3 sheave quick–reeve hook block with safety latch
- 100 ton (91mt) 5 sheave quick–reeve hook block with safety latch
- 140 ton (127mt) 7 sheave quick–reeve hook block with safety latch
- 200 ton (181mt) 10 sheave quick–reeve hook block with safety latch
- 275 ton (250mt) base rating hook block – two 140 ton (127mt) 7 sheave quick–reeve hook blocks with safety latch and 275 ton (250mt) hook block equalizer
- 12 ton (10.9mt) swivel hook ball with safety latch

Fly – Optional

- 40 – 67 ft (12.19 – 20.42m) two piece bi-fold lattice fly, stowable, offsettable to 2° , 15° , 30° , and 45° . Maximum tip height is 301 ft (91.7m). Minimum of 36,000 lb (16 329kg) of counterweight required.
- 12-40-67 ft (3.65-12.19-20.42m) three piece bi-fold lattice fly, stowable, offsettable to 2° , 15° , 30° , and 45° . Maximum tip height is 301 ft (91.7m). Minimum of 36,000 lb (16 329kg) of counterweight required.
- 12-40-67 ft (3.65-12.19-20.42m) three piece bi-fold lattice fly, stowable hydraulically offsettable to 2° through 45° . Maximum tip height is 301 ft (91.7m). Minimum of 36,000 lb (16 329kg) of counterweight required.

Fly Extensions – Optional

- One 25 ft (7.62m) lattice extension, equipped with one 16.38 in (41.6cm) root diameter nylon deflector sheave to be mounted between the boom head and fly options. Maximum tip height of 325.3 ft (99.2m). Minimum of 58,000 lb (26 308kg) of counterweight required.
- Two 25 ft (7.62m) lattice extensions, equipped with one 16.38 in (41.6cm) root diameter nylon deflector sheave to be mounted between the boom head and fly options. Maximum tip height of 350 ft (106.7m). Minimum of 58,000 lb (26 308kg) of counterweight required.

■ Upper Operator's Cab and Controls

Environmental Cab – Fully enclosed, one person cab of galvanneal steel structure with acoustical insulation.

Equipped with:

- Tilting cab up to 20°
- Tinted and tempered glass windows
- Five way adjustable, cushioned seat with headrests, and seat belt
- Extra—large fixed front window with windshield wiper and washer
- Swing up roof window with windshield wiper
- Sliding left side door with large fixed window
- Sliding right side window for ventilation
- Engine dependent warm – water heater with air ducts for front windshield defroster and cab floor
- Defroster fan for the front window
- Bubble level
- Circulating fan
- Sun screen
- LED Dome light
- Cup holder
- Fire extinguisher
- Left side viewing mirror
- Two position travel swing lock
- AM/FM Radio

Air Conditioning – Integral with cab heating system utilizing the same ventilation outlets

Armrest Controls – Two dual axis electronic joystick controllers or optional single axis electronic controllers for:

- Swing
- Boom hoist
- Main front winch
- Auxiliary rear winch – optional
- Drum rotation indication
- Drum rotation indicator activation switch
- Winch high/low speed disable switch(es)
- Cab heater and A/C controls
- Throttle lock switch
- Throttle set/resume switch
- Cab tilt switch
- Counterweight handling switch
- Warning horn button
- Swing park brake
- Remote controlled boom flood light – optional

Foot Controls

- Boom Telescope
- Swing brake
- Engine throttle

Right Front Console – Controls and indicators for:

- Warning horn button
- Function disable switch
- Cab floodlights switch
- Console dimmer switch
- 2–12 volt accessory outlets (Switched & Unswitched)
- Emergency engine shutdown
- Windshield wiper/washer switch
- Outrigger keypad
- Upper ignition switch
- Lower ignition switch
- DPF regeneration inhibit switch⁽¹⁾
- DPF regeneration initiate switch⁽¹⁾
- Single and dual boom floodlight switches – optional
- Rotating beacon/strobe light switch – optional
- Hydraulic offset fly switch – optional

Camera Display – Located on dash console

- Displays right side of upper
- Displays main and auxiliary winches

Cab Instrumentation – Ergonomically positioned LCD display, CANBUS instrumentation for crane operation including:

- Tachometer
- Change Hydraulic filter indication
- Engine water temperature
- Fuel level
- Hydraulic oil temperature
- Stop engine
- Check engine
- Wait to start
- High exhaust temperature light⁽¹⁾
- Exhaust system cleaning light⁽¹⁾
- Exhaust system cleaning Disabled light⁽¹⁾
- Swing park brake light
- Fine metering function set & %
- Diesel exhaust fluid (DEF) Low Light⁽¹⁾
- Engine air filter high restriction Light
- Engine Running Hours
- Hydraulic Oil Life Indicator
- Engine Oil Life Indicator
- General Service Indicator
- Carrier engine indicator lights and gauges
- Engine oil pressure
- Battery voltage
- Engine hours
- Fuel rate (gal/hr)
- Engine load
- Third wrap indicator activation & setup
- Engine Diagnostics
- Electronic Control Diagnostics
- Outrigger level indicator
- Exhaust system cleaning inhibit switch⁽¹⁾
- Exhaust system cleaning initiate switch⁽¹⁾
- Service interval indicator
 - Hydraulic oil
 - Engine oil
 - Miscellaneous – user defined

⁽¹⁾ (Tier 4f / Stage IV engine only)

Diagnostic Center — Located on the left side of the front panel below the windshield

- Engine diagnostic
- RCL CANBUS diagnostic
- Boom CANBUS diagnostic
- Crane Controller USB diagnostic
- RCL controller USB diagnostic
- Manual boom control connection
- Manual crane control connection

Link-Belt Pulse — The Link-Belt in-house designed, total crane operating system that utilizes the display as a readout and operator interface for the following systems:

- **Rated capacity limiter** — LCD graphic audio — visual warning system integrated into the dash with anti — two block and function limiter. Operating data includes:
 - Crane configuration
 - Boom length
 - Boom head height
 - Allowed load and % of allowed load
 - RCL light bar
 - Boom angle
 - Radius of load
 - Actual load
 - Wind speed
 - Highlighted unit of measurement on working screen
 - Active pin/latch status
 - Telescope operation displayed in real time
 - Counterweight installation/removal
 - Third wrap indicator
 - Diagnostics
 - Outrigger position sensing
 - Drum rotation direction indicator
 - Operator settable alarms (include):
 - Maximum and minimum boom angles
 - Maximum tip height
 - Maximum boom length
 - Swing left/right positions
 - Operator defined area (imaginary plane)
- **Telematics** — Cellular—based data logging and monitoring system that provides:
 - Location and operational settings
 - Routine maintenance
 - Crane and engine monitoring
 - Diagnostic and fault codes
- **Extend control module (ECM)**
 - Controls the extend modes
 - Diagnostics
- **Electronic controllers**
 - Controls all load lifting functions
 - Diagnostics
- **Fine metering**
 - Controls the reaction speeds of the main and auxiliary winches, boom hoist, and swing functions
 - Diagnostics

Integrated Third Wrap Indicator — Optional — Link-Belt Pulse color display visually and audibly warns the operator when the wire rope is on the first/bottom layer and when the wire rope is down to the last three wraps.

Integrated Third Wrap Function Kickout — Optional — Link—Belt Pulse color display visually and audibly warns the operator when the wire rope is on the first/bottom layer and provides a function kickout when the wire rope is down to the last three wraps.

Internal RCL Light Bar — Visually informs the operator when crane is approaching maximum load capacity with a series of green, yellow, and red lights.

External RCL Light Bar — Optional — Visually informs the ground crew when crane is approaching maximum load capacity with a series of green, yellow, and red lights.

■ Swing

Motor/Planetary — Two bi-directional hydraulic swing motors mounted to planetary reduction units for 360° continuous smooth swing at 1.5 rpm.

Swing Park Brake — 360°, electric over hydraulic, (spring applied/hydraulic released) multi—disc brake mounted between the speed reducer and the motor. Operated by a switch in the operator's cab.

Swing Brake — 360°, foot operated, hydraulic applied disc brake mounted to the reduction unit.

Swing Lock — Two — position swing lock (boom over the front or rear) operated from the operator's cab.

360° Positive Swing Lock — Optional — Meets New York City requirement.

■ Central Lubrication System

Automated lubrication unit that injects grease into the turntable bearing, boom hoist cylinder pins, boom foot pins, house lock (2—position), and cab tilt cylinder. Activated by a timer on the ignition switch.

■ Electrical

Two batteries provide 12 — volt operation and starting. CANBUS wiring and components.

Swing Alarm — Audio/Visual warning device signals when the upper is swinging.

Lights

- Two LED working lights on the front of the cab
- Work Lighting Package — optional
 - Includes six (6) LED lights
 - Working light on top of the cab
 - Right side of superstructure facing forward
 - Left & right upper work platforms
 - Left & right sides of superstructure facing down
- One amber strobe beacon on top of the cab — optional
- Boom floodlight — Optional
- Boom floodlight — Dual— optional
- Boom floodlight — High intensity remote controlled— optional

Power Panel — Sealed power panel containing:

- Battery disconnects
- Hour meter
- Fuses, circuit breakers, relays, diodes, resistors
- Control modules

■ Hydraulic System

Main Pumps

- Two piston pumps for boom hoist and telescope
- Two piston pumps for main and auxiliary winches
- One piston pump for swing
- One piston pump for counterweight removal and hydraulic fly option
- One gear pump for engine fan
- One gear pump for upper oil cooler fan
- The upper engine powers the pumps. Combined pump capacity of 218 gpm (825.2Lpm).

Hydraulic Reservoir – 168 gal (635.9L) capacity equipped with sight level gauge. Diffusers built in for deaeration, and magnetic drain plug.

Filtration

- One, 7 – micron filter inside hydraulic reservoir, accessible for easy replacement
- One, 7 – micron charge filter next to the reservoir with an in – cab indicator light
- One suction strainer inside the hydraulic reservoir

“Fine inching” Mode – Special fine metering settings, selectable from the LCD, allows very slow movements to the main and auxiliary winches, boom hoist, and swing for precision work.

Counterbalance Valves – Boom extend cylinder and boom hoist cylinder are equipped with counterbalance valves to provide load lowering and prevents accidental load drop when hydraulic power is suddenly reduced.

Hydraulic Oil Cooler – Mounted on right side above telescoping valve. Removes heat from the hydraulic oil.

Boom Hoist Float Valves – For transporting the boom over the rear of the crane with a boom dolly. Allows hydraulic oil within the boom hoist cylinder to flow between piston side and case side.

Swing Brake Release Valve – For transporting the boom over the rear of the crane with a boom dolly. Holds the 360° swing park brake in the released position allowing free rotation of the upper structure.

■ Pump Drive

All pumps are mechanically driven by the diesel engine.

■ Fuel Tank

One 58 gal (219.5L) capacity aluminum diesel tank.

One 5 gal (18.9L) capacity diesel exhaust fluid (DEF) plastic tank.

■ Engine

| Specification | Cummins QSB–6.7 | |
|---|--|----------------------------------|
| | Tier 4f/Stage IV ⁽¹⁾ | Tier 3/Stage IIIA ⁽²⁾ |
| Emissions Compliance Level | Tier 4f/Stage IV ⁽¹⁾ | Tier 3/Stage IIIA ⁽²⁾ |
| Maximum allowable sulfur content of fuel (PPM): | 15 | 5,000 |
| Numbers of cylinders | 6 | 6 |
| Cycle | 4 | 4 |
| Bore and Stroke: inch (mm) | 4.21 x 4.88 (106.9 x 124) | 4.21 x 4.88 (106.9 x 124) |
| Piston Displacement: in ³ (cm ³) | 408 (6 702) | 408 (6 702) |
| Max. Brake Horsepower: hp (kW) | 215 (160) @ 1,800 rpm | 205 (152) @ 1,800 rpm |
| Peak Torque: ft lb (Nm) | 700 (949) @ 1,500 rpm | 685 (928) @ 1,500 rpm |
| Alternator: volts – amps | 12 – 160 | 12 – 160 |
| Crankcase Capacity: qt (L) | 19 (18) | 19 (18) |
| | <ul style="list-style-type: none"> • Water/fuel separator w/ heater and water in fuel (WIF) sensor • 120–volt block heater – Tier 4f / Stage IV • 220–volt block heater – Tier 3 / Stage IIIA • Grid heater – 200 amp • Mechanically driven, variable speed, engine controlled, viscous fan clutch • ⁽¹⁾ Can only be sold and/or operated where Tier 4f/Stage IV off–highway emission standards are accepted. • ⁽²⁾ Can only be sold and/or operated where Tier 3/Stage IIIA off–highway emission standards are accepted. | |

■ Load Hoist System

Load Hoist Performance

| Main (Front) and Auxiliary (Rear) Winches – 22mm (7/8 in) Rope | | | | | | | | | | |
|--|-------------------|-------|-------------------|-------|-----------------|-------|-------|------|-------|-------|
| Layer | Maximum Line Pull | | Normal Line Speed | | High Line Speed | | Layer | | Total | |
| | lb | kN | ft/min | m/min | ft/min | m/min | ft | m | ft | m |
| 1 | 25,955 | 115.5 | 131 | 39.9 | 262 | 79.9 | 125 | 38.1 | 125 | 38.1 |
| 2 | 23,418 | 104.2 | 145 | 44.2 | 291 | 88.7 | 138 | 42.0 | 263 | 80.1 |
| 3 | 21,332 | 94.9 | 160 | 48.8 | 319 | 97.2 | 152 | 46.3 | 414 | 126.1 |
| 4 | 19,588 | 87.1 | 174 | 53.0 | 348 | 106.0 | 165 | 50.3 | 579 | 176.5 |
| 5 | 18,108 | 80.5 | 188 | 57.3 | 376 | 114.6 | 179 | 54.6 | 758 | 231.0 |
| 6 | 16,835 | 74.9 | 202 | 61.5 | 405 | 123.4 | 192 | 58.5 | 950 | 289.5 |

| Wire Rope Application | | Diameter | | Type | Maximum Permissible Load | |
|-----------------------|----------|----------|----|---|--------------------------|-------|
| | | in | mm | | lb | kN |
| Main | Standard | 7/8 | 22 | 34x7 rotation resistant – right regular lay (Type ZB) | 20,920 | 93.05 |
| | Optional | 7/8 | 22 | 34x7 rotation resistant – right regular lay (Type YB) | 21,680 | 96.43 |
| Auxiliary | Standard | 7/8 | 22 | 34x7 rotation resistant – right regular lay (Type ZB) | 20,920 | 93.05 |
| | Optional | 7/8 | 22 | 34x7 rotation resistant – right regular lay (Type YB) | 21,680 | 96.43 |

2M Main (Front) and Optional Auxiliary (Rear) Winches

- Axial piston, full and half displacement (2-speed) motors driven through planetary reduction unit for positive control under all load conditions
- Grooved lagging
- Power up/down mode of operation
- Hoist drum cable followers – optional
- Drum rotation indicators
- Drum diameter: 15 in (38.1cm)
- Rope diameter: 22mm (0.875 in)
- Rope length:
 - Main (Front) 950 ft (289.5m)
 - Auxiliary (Rear) 725 ft (221m) or 950 ft (289.5m)
- Maximum rope storage: 951 ft (289.9m)
- Terminator style socket and wedge

Optional – 79,500 lb (36.1t) in addition to standard counterweight for a total of 115,500 lbs (52.4t) counterweight for additional capacities for:

- 58,000 lb (26.3t) counterweight
- 80,000 lb (36.3t) counterweight
- 102,000 lb (46.3t) counterweight
- 115,500 lbs (52.4t) counterweight

Optional – 120,500 lb (54.7t) in addition to standard counterweight for a total of 156,500 lbs (71.t) counterweight for additional capacities for:

- 58,000 lb (26.3t) counterweight
- 80,000 lb (36.3t) counterweight
- 102,000 lb (46.3t) counterweight
- 115,500 lbs (52.4t) counterweight
- 156,500 lbs (71.0t) counterweight*

Low speed jobsite travel is offered for all counterweight configurations and a boom dolly or boom trailer may be required for on-highway travel.

*Overall width of the crane increases to 15 ft 2 in (4.6m).

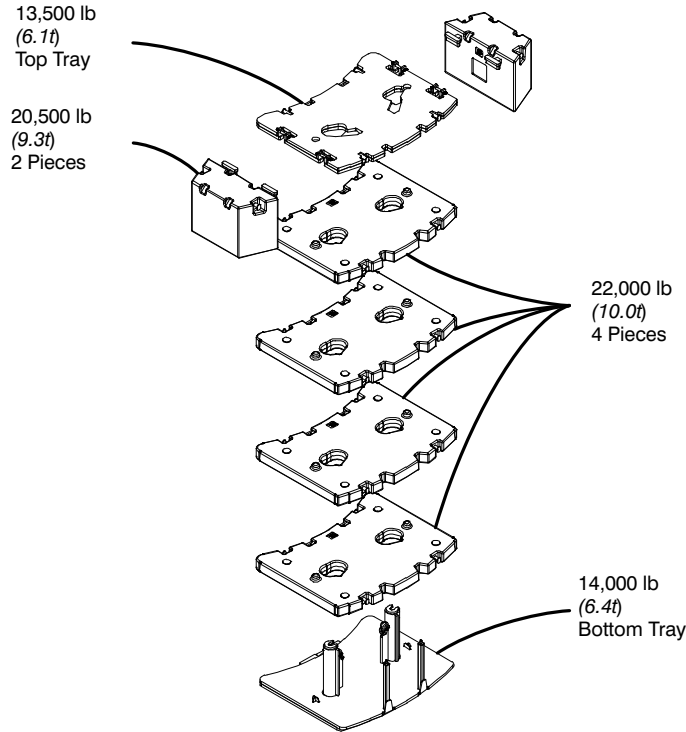
■ Counterweight

Standard – Total of 36,000 lbs (16.3t) of total counterweight consisting of two hydraulically removable counterweights. Assembled and disassembled by hydraulic cylinders controlled from the operator's cab with capacities for:

- 0 lb (0t) counterweight
- 14,000 lb (6.4t) counterweight
- 36,000 lb (16.3t) counterweight

Optional – 44,000 lb (20.0t) in addition to standard counterweight for a total of 80,000 lb (36.3t) counterweight for additional capacities for:

- 58,000 lb (26.3t) counterweight
- 80,000 lb (36.3t) counterweight



| Counterweight Packages | | 36,000 lb (16.3t) – Standard | | | | | | |
|------------------------------------|--------------------|-------------------------------|-----------------------|-----------------------|-----------------------|------------------------|---------------------------|-------------------------|
| | | 80,000 lb (36.3t) – Optional | | | | | | |
| Counterweight Modules | | 115,500 lb (52.4t) – Optional | | | | | | |
| | | 156,500 lb (71.0t) – Optional | | | | | | |
| | | 14,000 lb (6.4t) Bottom Tray | 22,000 lb (10t) piece | 22,000 lb (10t) piece | 22,000 lb (10t) piece | (22,000 lb (10t) Piece | 13,500 lb (6.1t) Top Tray | 20,500lb (9.3t) 2–Piece |
| Counterweight Usage Configurations | 0 lb (0t) | | | | | | | |
| | 14,000 lb (6.4t) | X | | | | | | |
| | 36,000 lb (16.3t) | X | X | | | | | |
| | 58,000 lb (26.3t) | X | X | X | | | | |
| | 80,000 lb (36.3t) | X | X | X | X | | | |
| | 102,000 lb (46.3t) | X | X | X | X | X | | |
| | 115,500 lb (52.4t) | X | X | X | X | X | X | |
| | 156,500 lb (71.0t) | X | X | X | X | X | X | X |

Carrier

General

- 9 ft 10 in (3.0m) wide
- 28 ft 9 in (8.76m) wheel base (centerline of first axle to centerline of fifth axle)
- **Frame** — Box — type, torsion resistant, welded construction made of high tensile steel. Equipped with front and rear tie — down lugs and access ladders.

Outriggers

Boxes — Two double box, front and rear welded to the carrier frame

Beams and Jacks — Four dual stage beams with Confined Area Lifting Capacities (CALC) provide selectable outrigger extensions of full, intermediate, and retracted positions. Jacks with integral check valves, hydraulically controlled from the operator's cab and on both sides of the carrier. A fifth front bumper outrigger, 16 in (40.64cm) with integral check valves hydraulically controlled from the operator's cab, both sides of carrier, and at the front bumper of carrier.

Pontoons

- **Main** — Four stow'n go, 22.25" (56.52cm) square steel pontoons with a contact area of 385 in² (2 483.8cm²) can be stored for road travel under the outrigger boxes
- **Front Bumper** — One, lightweight, self-storing, 16" (40.6cm) diameter steel pontoon with a contact area of 201 in² (1 296cm²)

Outrigger Work Station Floodlights — LED Flood lights are mounted at each outrigger beam and 5th outrigger.

Jack Reaction

- **Main** — 203,000 lb (903.0kN) force and 527 psi (3 633.5kPa) ground bearing pressure. Consult factory for base rating ground bearing pressure information.
- **Front Bumper** — 76,000 lb (338.1kN) force and 378 psi (2 606kPa) ground bearing pressure

Steering and Axles

- Sheppard full integral master gear/slave gear steering system provides hydraulic assisted steering with mechanical link between steering wheel and wheels

On Highway (Primary) Steering Mode — Axles 3, 4, and 5 will automatically steer in combination with axles 1 and 2 based on travel speed:

| On-Highway (Primary) | | | |
|----------------------|-----------------------------|-------------------------|------------------------------|
| Speed | Less than 18.6 mph (30km/h) | 18.6-31 mph (30-50km/h) | Greater than 31 mph (50km/h) |
| Axle 1 | Steered | Steered | Steered |
| Axle 2 | Steered | Steered | Steered |
| Axle 3 | Steered | Locked | Locked |
| Axle 4 | Steered | Locked | Locked |
| Axle 5 | Steered | Steered | Locked |

Off Road (Auxiliary) Steering Modes — Four independent modes consisting of:

- **All Wheel:** Axles 1, 2, 3, 4, and 5
- **Diagonal (Crab):** Axles 1, 2, 3, 4, and 5
- **Independent Rear:** Axles 3, 4, and 5
- **Drive Away From Walls:** Temporary crab

The front, all wheel, and diagonal (crab) steering modes are controlled from the steering wheel and are selected by controls in the driver's cab. Switches in the driver's cab control the rear steering mode through the steering module display.

- **Emergency Steering** — A pump is flange-mounted to the transmission and provides hydraulic pressure to the steering circuit as long as the crane is in motion
- **Drive** — 10 x 6 for on/off—highway travel
- **Axle 1** — Steered, driven
- **Axle 2** — Steered
- **Axle 3** — Steered
- **Axle 4** — Steered, driven
- **Axle 5** — Steered, driven
- **Inter-Axle Differential Lock** — Traction aiding device that locks axles 1, 4, and 5. Operated by a switch in the carrier cab.
- **Transverse (Cross-Axle) Differential Locks** — Traction aiding device that locks differentials within axles 1, 4, and 5. Operated by a momentary switch in the carrier cab.

Suspension

Hydro — pneumatic, lockable with level adjustment and automatic ride height leveling. All axles have longitudinal and transverse trailing arms with leveling adjustment and lockable cylinders. The carrier can be raised and lowered by controls in the carrier cab that adjust the suspension cylinders.

- Cylinder stroke: —4.5 in (—11.43cm)/+3.5 in (8.89cm) at ride height

Ground Control Outrigger/Suspension Controls

Environmentally sealed and ergonomically positioned, control stations located on both sides of the carrier with controls for crane operations including:

- Start and stop carrier engine
- Throttle carrier engine up and down
- Raise suspension on outriggers
- Outrigger operation including:
 - Extends and retracts two beams together
 - Extends and retracts all main jacks together
 - Extend and retract fifth (bumper) outrigger
 - Automatic leveling on outriggers
- Outrigger lighting
- Bubble level

■ Tires and Wheels

Standard – Ten (single) 525/80R25 tires on aluminum disc wheels

Optional – Ten (single) 445/95R25 tires on aluminum disc wheels

- Tire inflation kit – optional
- Spare tires and wheels – optional

■ Brakes

Service – Air anti-lock (ABS) braking system. Disc brakes on all wheel ends. Dual circuit compressed air system with air dryer.

Parking/Emergency – Spring loaded type, acting on 3rd, 4th, and 5th axles automatically apply when air pressure drops below 40 psi (275kPa) in both circuits.

Intarder – Hydrodynamic driveline brake that is integral to the transmission. Activated by a switch in the carrier cab and controlled by a lever on the steering column.

Traction Control – ABS activated traction control to limit wheel slip of axles 2, 4, and 5.

■ Central Lubrication System

Automated lubrication unit that injects grease into the steering gear arms, steering knuckles, axle king pins, and suspension cylinders. Activated by a timer on the ignition switch.

■ Electrical

Battery – Three batteries provide 12 volt starting and operation, easily accessible battery disconnects, and battery jumping posts

Lights

- Front lighting includes two main daytime running/headlights, two high beam lights, two LED parking/directional indicators, and three LED cab marker lights
- Side lighting includes four parking/directional indicators per side
- LED Rear lighting includes two parking/directional indicators, two parking/brake lights, two reverse lights, three marker lights, and a license plate light
- Other equipment includes hazard/warning system, cab LED light, instrument panel light, signal horn, two outrigger LED lights on each side, and 5th outrigger light
- One amber strobe beacon behind the cab

■ Transmission

Main Transmission – Automated – ZF AS-Tronic (no clutch pedal) manual transmission with 12 forward gears and 2 reverse gears.

Auxiliary Transmission – Air actuated manual transmission with high/low range

■ Fuel Tank

- One 95 gal (359.6L) capacity aluminum fuel tank
- One 10 gal (37.8L) capacity diesel exhaust fluid (DEF) plastic tank

■ Engine

| Specification | Cummins ISX 15 | Cummins QSX15 |
|--|--|--|
| Emission compliance level: | EPA2013 ⁽¹⁾ | Tier 3/Stage IIIA ⁽²⁾ |
| Maximum allowable sulfur content of fuel (PPM): | 15 | 5,000 |
| Numbers of cylinders | 6 | 6 |
| Cycle | 4 | 4 |
| Bore and Stroke: inch (mm) | 5.39 x 6.65 (136.9x169) | 5.39 x 6.65 (136.9x169) |
| Piston Displacement: in ³ (cm ³) | 912 (14 945) | 912 (14 945) |
| Max. Brake Horsepower: hp (kW) | 550 (410) @ 2,000 rpm 564 (421) @ 1,700 rpm | 555 (413) @ 1,800 rpm 520 (387) @ 2,100 rpm |
| Peak Torque: ft lb (Nm) | 1,850 (2 508) @ 1,200 rpm | 1,744 (2 364) @ 1,400 rpm |
| Alternator: volts – amps | 12 – 160 | 12 – 160 |
| Crankcase Capacity: qt (L) | 48 (45.4) | 48 (45.4) |

- Cruise control
- Cummins ISX Three stage engine compression brake
- Thermostatically controlled, hydraulically driven radiator fan
- 120 volt engine block heater – ISX
- Ether injection system – optional on ISX
- Grid heater starting aid standard on QSX
- 220 volt engine block heater – QSX
- Cummins QSX Two stage compression brake

- (1) Can only be sold and/or operated where EPA2013 on-highway emission standards are accepted.
- (2) Can only be sold and/or operated where Tier 3/Stage IIIA off-highway emission standards are accepted.

■ Hydraulic System

All functions are hydraulically powered allowing positive, precise control with independent or simultaneous operation of all functions.

Main Pumps

- Two section fixed displacement gear pump for 1st and 2nd axle steering circuits, suspension, outriggers, and 3rd and 4th axle steering circuits
- One fixed displacement gear pump for 5th axle steering circuit
- One fixed displacement piston pump for cooling fan circuit
- Combined pump capacity of 66 gpm (249.8Lpm)

Hydraulic Reservoir – 57 gal (215.7L) capacity equipped with sight level gauge. Diffusers built in for deaeration.

Filtration – Two 10 micron, full flow return line filters. All oil is filtered prior to return to reservoir. Accessible for easy filter replacement.

■ Pump Drive

- Engine fan, outriggers, steering, and suspension pumps mounted to the back of engine
- Rear steering pump mounted to back of air compressor
- Ground driven pump mounted to back of transmission

Carrier Speeds and Gradeability

| ZF AS-Tronic Transmission | | Speed | | | | Gradeability (@ peak torque Except Creep @ Idle) | |
|---------------------------|-------|-----------------------|-------|----------------------|-------|--|-------|
| Gear | Ratio | High Range (0.804) | | Low Range (1.781) | | % Grade | |
| | | mph | km/h | mph | km/h | Min. | Max. |
| 12th | 0.78 | 62.00 | 99.78 | 26.33 | 42.37 | 1.51 | 5.20 |
| 11th | 1.00 | 45.50 | 73.23 | 20.54 | 33.06 | 2.46 | 6.95 |
| 10th | 1.27 | 35.83 | 57.66 | 16.17 | 26.02 | 3.51 | 9.06 |
| 9th | 1.62 | 28.09 | 45.21 | 12.68 | 20.41 | 4.81 | 11.78 |
| 8th | 2.10 | 21.67 | 34.87 | 9.78 | 15.74 | 6.54 | 15.49 |
| 7th | 2.69 | 16.91 | 27.21 | 7.64 | 12.30 | 8.63 | 20.04 |
| 6th | 3.56 | 12.78 | 20.57 | 5.77 | 9.29 | 11.68 | 26.75 |
| 5th | 4.57 | 9.96 | 16.03 | 4.49 | 7.23 | 15.20 | 34.52 |
| 4th | 5.78 | 7.87 | 12.67 | 3.55 | 5.71 | 19.42 | 43.84 |
| 3rd | 7.41 | 6.14 | 9.88 | 2.77 | 4.46 | 25.09 | 56.38 |
| 2nd | 9.59 | 4.74 | 7.63 | 2.14 | 3.44 | 27.01 | 60.61 |
| 1st | 12.29 | 3.70 | 5.95 | 1.67 | 2.69 | 26.87 | 60.29 |
| Reverse (1) | 11.38 | 4.00 | 6.44 | 1.80 | 6.13 | 26.90 | 60.36 |
| Reverse (2) | 8.88 | 5.12 | 8.24 | 2.31 | 7.85 | 27.03 | 60.66 |
| 1st @ 700 rpm | 12.29 | 1.30 | 2.09 | 0.58 | 0.93 | | |
| Reverse (1) @ 700 rpm | 11.38 | 1.40 | 2.25 | 0.63 | 1.01 | | |
| Reverse (2) @ 700 rpm | 8.88 | 1.79 | 2.88 | 0.81 | 1.30 | | |

Based on a gross vehicle weight of 136,000 lb (61 688.5kg) using 525/80R25 tires

■ Lower Cab and Controls

Environmental Cab – Fully enclosed, one person cab of composite structure with acoustical insulation. Equipped with:

- Tinted and tempered glass windows
- Roll down left side window for ventilation
- Intermittent windshield wiper and washer
- Six way adjustable and air suspended driver's seat with seat belt
- Two heated and electrically adjustable side view mirrors
- Engine dependent warm–water heater with air ducts for windshield defroster and cab floor
- Adjustable sun visor
- LED dome light
- Fire extinguisher

Air Conditioning – Integral with cab heating system utilizing the same ventilation outlets

Overhead Console – Located above the sun visor

- Document storage unit
- AM/FM Radio
- Strobe beacon switch

Camera Display – Located on dash console:

- Displays right side of machine
- Displays rear view

Power Panel – Sealed power panel behind carrier cab containing:

- Main circuit breakers & relays
- Rear steer modules
- ABS modules
- 12/24 volt convertor

Cab Instrumentation – Ergonomically positioned instrumentation for driving including:

- Speedometer with odometer, hour meter, trip meter, and clock
- Tachometer
- Front and rear system air pressure with warning indicator
- Diesel exhaust fluid (DEF) level with warning indicator⁽¹⁾

Dash Mounted Controls For:

- Carrier lights
- Console dimmer switch
- Remote mirror control switches
- Mirror heating switch
- Cab heater/air conditioning switch
- Fresh/Recirculation air switch
- Park brake air valve
- Trailer brake air valve
- Carrier engine ignition switch

Dash Mounted Indicators For:

- Turn signal indication
- High beam headlights

Right Side Diagonal LCD Display – Ergonomically positioned on the right of driver's dash panel, digital instrumentation and indicators for crane operations including:

Gauges

- Engine water temperature
- Engine oil pressure
- Fuel level
- Voltmeter

Indicator Lights

- Regeneration inhibit⁽¹⁾
- Check engine
- Stop engine
- Exhaust regeneration⁽¹⁾
- High exhaust temperature⁽¹⁾
- Wait to start
- Malfunction indicator lamp⁽¹⁾
- Engine air filter high restriction light
- Cruise
- Park brake
- ABS
- Trailer ABS
- Steer computer
- Steer pump
- Steer hydraulic oil level
- Transaxle (cross–axle) differential lock
- Inter–axle differential lock
- Transfer case
- Travel mode
- Ride height
- Diesel Exhaust Fluid (DEF) level⁽¹⁾
- Seat belt
- Traction control

Diagnostic Screens

- Engine
- After treatment
- Suspension/Outriggers
- Intarder

Right Side Console – Controls and indicators for:

- Transmission gear shifting
- Transmission digital readout
- Cruise controls
- Engine compression brake controls
- Steering electronic control panel
- Console dimmer switch
- Auxiliary transmission range selector switch
- Intarder on/off switch
- Diesel particulate filter switch⁽¹⁾
- Regeneration inhibit switch⁽¹⁾
- Fan override switch
- ABS Traction control switch
- Transaxle (cross–axle) differential lock switch with indicator light
- Inter–axle differential lock switch with indicator light
- Travel mode switch
- Front axles (axles 1 & 2) suspension height switch
- Rear axles (axles 3–5) suspension height switch
- Ride height switch
- 2/12 volt accessory outlet (switched & unswitched)

Steering Column Controls For:

- Turn signal switch
- High beam switch
- Steering wheel adjustments
- Warning horn
- Hazard light switch
- Intarder brake control lever
- Intermittent windshield wiper and washer

Foot Controls For:

- Carrier service brakes
- Engine throttle

⁽¹⁾ (EPA 2013 engine only)

Fuse & Diagnostic Center – Located inside cab behind seat contains:

- Fuses, Relays
- Control Modules
- Diagnostic ports
 - Suspension diagnostic
 - Engine diagnostic
 - ABS Diagnostic
 - Cab display diagnostic
 - Intruder Diagnostic
 - Transmission Diagnostic
 - Steering Diagnostic

■ Additional Equipment

Standard:

- Aluminum full deck fenders with mud flaps
- One right side aluminum storage box with ladder
- Air hose connection ports
- Clearance flags
- Front and rear anchor shackles
- Pneumatic and electrical quick disconnect connections mounted to the rear for trailer or boom dolly brakes and lights

Optional:

- Rear mounted pintle hook
- Boom removal kit

Axle Loads – English

| Base crane with full tanks of fuel and no counterweight | Gross Vehicle Weight (1) | Axle 1 | Axle 2 | Axle 3 | Axle 4 | Axle 5 |
|--|--------------------------|--------|--------|--------|--------|--------|
| | lb | lb | lb | lb | lb | lb |
| | 134,077 | 27,175 | 26,724 | 26,331 | 27,015 | 26,831 |
| Driver in carrier cab | 250 | 177 | 177 | -34 | -34 | -34 |
| Remove pontoons | -431 | -15 | -15 | -134 | -134 | -134 |
| Ether injector | 5 | 4 | 4 | -1 | -1 | -1 |
| Rear pintle hook | 44 | -13 | -13 | 23 | 23 | 23 |
| 16.00R25 (445/95R25) tires (instead of standard) | -1,008 | -202 | -202 | -202 | -202 | -202 |
| Carrier cab strobe light | 5 | 4 | 4 | -1 | -1 | -1 |
| Hoist drum follower - main | 96 | -25 | -25 | 49 | 49 | 49 |
| Auxiliary winch with 725 ft (221m) of 7/8" (22mm) wire rope | 3,205 | -988 | -988 | 1,727 | 1,727 | 1,727 |
| Remove auxiliary winch with 725 ft (221m) of 7/8" (22mm) wire rope | -2,923 | 925 | 925 | -1,591 | -1,591 | -1,591 |
| Hoist drum follower - auxiliary | 96 | -36 | -36 | 56 | 56 | 56 |
| Remove 950 ft (289.5m) of wire rope from front (main) winch | -1,454 | 334 | 334 | -707 | -707 | -707 |
| Remove 725 ft (221mm) of wire rope from rear (auxiliary) winch | -1,109 | 303 | 303 | -572 | -572 | -572 |
| Substitute 725 ft (221mm) of rope with 950 ft (289.5m) of rope - rear (auxiliary) | 344 | -94 | -94 | 177 | 177 | 177 |
| Substitute 950 ft (289.5m) of rope with 725 ft (221m) of rope - front (main) | -344 | 79 | 79 | -167 | -167 | -167 |
| 360° mechanical swing lock | 151 | -52 | -52 | 85 | 85 | 85 |
| Boom launching option | 77 | -10 | -10 | 32 | 32 | 32 |
| Floodlight to the front of the boom base section | 7 | 5 | 5 | -1 | -1 | -1 |
| Fly mounting brackets to boom base section for fly options | 309 | 145 | 145 | 6 | 6 | 6 |
| 12 ft (3.65m) manual and hydraulically offsettable, lattice fly - stowed | 2,340 | 1,755 | 1,755 | -390 | -390 | -390 |
| 12-40 ft (3.65-12.2m) manual and hydraulically offsettable, two-piece (bi-fold) lattice fly - stowed | 3,879 | 2,177 | 2,177 | -158 | -158 | -158 |
| 12-40-67 ft (3.65-12.2-20.4m) manual and hydraulically offsettable, three-piece (bi-fold) lattice fly - stowed | 5,062 | 2,425 | 2,425 | 71 | 71 | 71 |
| Additional components for hydraulically offsettable fly | 422 | 211 | 211 | 0 | 0 | 0 |
| Auxiliary lifting sheave | 112 | 102 | 102 | -31 | -31 | -31 |
| 40 ton (36.3mt) 1 sheave hook block at front bumper | 1,450 | 1,138 | 1,138 | -275 | -275 | -275 |
| 66 ton (60mt) 3 sheave hook block at front bumper | 1,900 | 1,491 | 1,491 | -360 | -360 | -360 |
| 100 ton (91mt) 5 sheave hook block at front bumper | 2,250 | 1,765 | 1,765 | -427 | -427 | -427 |
| 140 ton (127mt) 7 sheave hook block at front bumper | 2,850 | 2,236 | 2,236 | -541 | -541 | -541 |
| 200 ton (181mt) 10 sheave hook block at front bumper | 3,200 | 2,511 | 2,511 | -607 | -607 | -607 |
| 12 ton (10.9mt) hookball at front bumper | 722 | 566 | 566 | -137 | -137 | -137 |

(1) Adjust gross vehicle weight and axle loading according to component weight. All weights are $\pm 3\%$.

| Tire | Maximum Axle Load @ 50 mph Average Speed |
|--|--|
| 20.5R25 (525/80R25) on aluminum disc wheels | 28,004 lb |
| 16.00R25 (445/95R25) on aluminum disc wheels | 29,224 lb |

Axle Loads – Metric

| Base crane with full tanks of fuel and no counterweight | Gross Vehicle Weight ⁽¹⁾ | Axle 1 | Axle 2 | Axle 3 | Axle 4 | Axle 5 |
|--|-------------------------------------|--------|--------|--------|--------|--------|
| | kg | kg | kg | kg | kg | kg |
| | 60 816 | 12 327 | 12 122 | 11 944 | 12 254 | 12 170 |
| Driver in carrier cab | 113 | 80 | 80 | -16 | -16 | -16 |
| Remove pontoons | -195 | -7 | -7 | -61 | -61 | -61 |
| Ether injector | 2 | 2 | 2 | 0 | 0 | 0 |
| Rear pintle hook | 20 | -6 | -6 | 11 | 11 | 11 |
| 16.00R25 (445/95R25) tires (instead of standard) | -457 | -91 | -91 | -91 | -91 | -91 |
| Carrier cab strobe light | 2 | 2 | 2 | 0 | 0 | 0 |
| Hoist drum follower - main | 44 | -11 | -11 | 22 | 22 | 22 |
| Auxiliary winch with 725 ft (221m) of 7/8" (22mm) wire rope | 1 454 | -448 | -448 | 783 | 783 | 783 |
| Remove auxiliary winch with 725 ft (221m) of 7/8" (22mm) wire rope | -1 326 | 419 | 419 | -722 | -722 | -722 |
| Hoist drum follower - auxiliary | 44 | -16 | -16 | 25 | 25 | 25 |
| Remove 950 ft (289.5m) of wire rope from front (main) winch | -659 | 151 | 151 | -321 | -321 | -321 |
| Remove 725 ft (221m) of wire rope from rear (auxiliary) winch | -503 | 137 | 137 | -259 | -259 | -259 |
| Substitute 725 ft (221m) of rope with 950 ft (289.5m) of rope - rear (auxiliary) | 156 | -43 | -43 | 80 | 80 | 80 |
| Substitute 950 ft (289.5m) of rope with 725 ft (221m) of rope - front (main) | -156 | 36 | 36 | -76 | -76 | -76 |
| 360° mechanical swing lock | 69 | -23 | -23 | 39 | 39 | 39 |
| Boom launching option | 35 | -5 | -5 | 15 | 15 | 15 |
| Floodlight to the front of the boom base section | 3 | 2 | 2 | -1 | -1 | -1 |
| Fly mounting brackets to boom base section for fly options | 140 | 66 | 66 | 3 | 3 | 3 |
| 12 ft (3.65m) manual and hydraulically offsettable, lattice fly - stowed | 1 061 | 796 | 796 | -177 | -177 | -177 |
| 12-40 ft (3.65-12.2m) manual and hydraulically offsettable, two-piece (bi-fold) lattice fly - stowed | 1 759 | 987 | 987 | -72 | -72 | -72 |
| 12-40-67 ft (3.65-12.2-20.4m) manual and hydraulically offsettable, three-piece (bi-fold) lattice fly - stowed | 2 296 | 1 100 | 1 100 | 32 | 32 | 32 |
| Additional components for hydraulically offsettable fly | 192 | 96 | 96 | 0 | 0 | 0 |
| Auxiliary lifting sheave | 51 | 46 | 46 | -14 | -14 | -14 |
| 40 ton (36.3mt) 1 sheave hook block at front bumper | 658 | 516 | 516 | -125 | -125 | -125 |
| 66 ton (60mt) 3 sheave hook block at front bumper | 862 | 676 | 676 | -164 | -164 | -164 |
| 100 ton (91mt) 5 sheave hook block at front bumper | 1 021 | 801 | 801 | -194 | -194 | -194 |
| 140 ton (127mt) 7 sheave hook block at front bumper | 1 293 | 1 014 | 1 014 | -245 | -245 | -245 |
| 200 ton (181mt) 10 sheave hook block at front bumper | 1 451 | 1 139 | 1 139 | -275 | -275 | -275 |
| 12 ton (10.9mt) hookball at front bumper | 327 | 257 | 257 | -62 | -62 | -62 |

⁽¹⁾ Adjust gross vehicle weight and axle loading according to component weight. All weights are $\pm 3\%$.

| Tire | Maximum Axle Load @ 80.5kph Average Speed |
|--|---|
| 20.5R25 (525/80R25) on aluminum disc wheels | 12 702.4kg |
| 16.00R25 (445/95R25) on aluminum disc wheels | 13 255.8kg |

Axle Loads with 2–Axle or 3–Axle Boom Dolly (3rd Axle Down) – English

| Base crane with full tanks of fuel and no counterweight | Gross Vehicle Weight ⁽¹⁾ | Axle 1 | Axle 2 | Axle 3 | Axle 4 | Axle 5 | Dolly |
|--|-------------------------------------|--------|--------|--------|--------|--------|--------|
| | lb | lb | lb | lb | lb | lb | lb |
| | 134,077 | 20,628 | 20,176 | 21,692 | 22,376 | 22,191 | 27,015 |
| Nelson 2 - axle boom dolly ⁽²⁾ | 6,600 | 0 | 0 | 0 | 0 | 0 | 6,600 |
| Nelson 3 - axle boom dolly ⁽²⁾ | 9,400 | 0 | 0 | 0 | 0 | 0 | 9,400 |
| Driver in carrier cab | 250 | 177 | 177 | -34 | -34 | -34 | 0 |
| Remove pontoons | -431 | -15 | -15 | -134 | -134 | -134 | 0 |
| Ether injector | 5 | 4 | 4 | -1 | -1 | -1 | 0 |
| Rear pintle hook | 44 | -13 | -13 | 23 | 23 | 23 | 0 |
| 16.00R25 (445/95R25) tires (instead of standard) | -1,008 | -202 | -202 | -202 | -202 | -202 | 0 |
| Carrier cab strobe light | 5 | 4 | 4 | -1 | -1 | -1 | 0 |
| Hoist drum follower - main | 96 | 30 | 30 | 12 | 12 | 12 | 0 |
| Auxiliary winch with 725 ft (221m) of 7/8" (22mm) wire rope | 3,205 | 1,168 | 1,168 | 290 | 290 | 290 | 0 |
| Remove auxiliary winch with 725 ft (221m) of 7/8" (22mm) wire rope | -2,923 | -1,089 | -1,089 | -248 | -248 | -248 | 0 |
| Hoist drum follower - auxiliary | 96 | 41 | 41 | 4 | 4 | 4 | 0 |
| Remove 950 ft (289.5m) of wire rope from front (main) winch | -1,454 | -416 | -416 | -207 | -207 | -207 | 0 |
| Remove 725 ft (221m) of wire rope from rear (auxiliary) winch | -1,109 | -365 | -365 | -126 | -126 | -126 | 0 |
| Substitute 725 ft (221m) of rope with 950 ft (289.5m) of rope - rear (auxiliary) | 344 | 113 | 113 | 39 | 39 | 39 | 0 |
| Substitute 950 ft (289.5m) of rope with 725 ft (221m) of rope - front (main) | -344 | -98 | -98 | -49 | -49 | -49 | 0 |
| 360° mechanical swing lock | 151 | 60 | 60 | 10 | 10 | 10 | 0 |
| Boom launching option | 77 | -10 | -10 | 32 | 32 | 32 | 0 |
| Floodlight to the front of the boom base section | 7 | 0 | 0 | 0 | 0 | 0 | 7 |
| Fly mounting brackets to boom base section for fly options | 298 | 21 | 21 | 16 | 16 | 16 | 210 |
| 12 ft (3.65m) manual and hydraulically offsettable, lattice fly - stowed | 2,340 | -30 | -30 | -23 | -23 | -23 | 2,469 |
| 12-40 ft (3.65-12.2m) manual and hydraulically offsettable, two-piece (bi-fold) lattice fly - stowed | 3,879 | 145 | 145 | 110 | 110 | 110 | 3,260 |
| 12-40-67 ft (3.65-12.2-20.4m) manual and hydraulically offsettable, three-piece (bi-fold) lattice fly - stowed | 5,062 | 300 | 300 | 227 | 227 | 227 | 3,782 |
| Additional components for hydraulically offsettable fly | 422 | 23 | 23 | 17 | 17 | 17 | 326 |
| Auxiliary lifting sheave | 112 | -6 | -6 | -5 | -5 | -5 | 139 |
| 40 ton (36.3mt) 1 sheave hook block at boom head | 1,450 | -67 | -67 | -51 | -51 | -51 | 1,735 |
| 66 ton (60mt) 3 sheave hook block at boom head | 1,900 | -88 | -88 | -66 | -66 | -66 | 2,274 |
| 100 ton (91mt) 5 sheave hook block at boom head | 2,250 | -104 | -104 | -78 | -78 | -78 | 2,693 |
| 140 ton (127mt) 7 sheave hook block at boom head | 2,850 | -131 | -131 | -99 | -99 | -99 | 3,411 |
| 12 ton (10.9mt) hookball at boom head | 722 | -33 | -33 | -25 | -25 | -25 | 864 |

⁽¹⁾ Adjust gross vehicle weight and axle loading according to component weight. All weights are $\pm 3\%$.

⁽²⁾ Weights may vary.

| Tire | Maximum Axle Load @ 50 mph Average Speed |
|--|--|
| 20.5R25 (525/80R25) on aluminum disc wheels | 28,004 lb |
| 16.00R25 (445/95R25) on aluminum disc wheels | 29,224 lb |

Axle Loads with 2–Axle or 3–Axle Boom Dolly (3rd Axle Down) – Metric

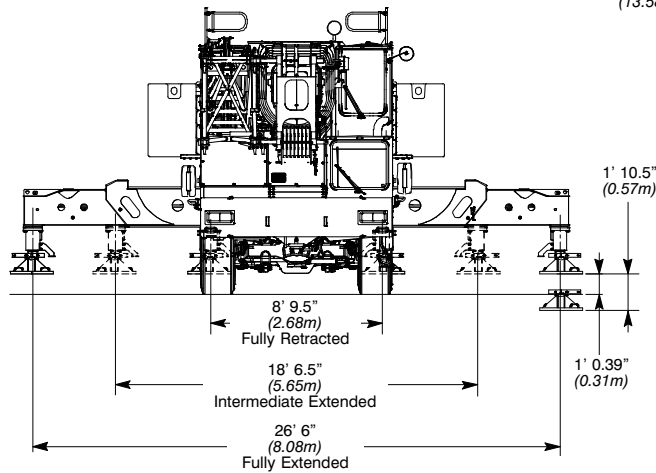
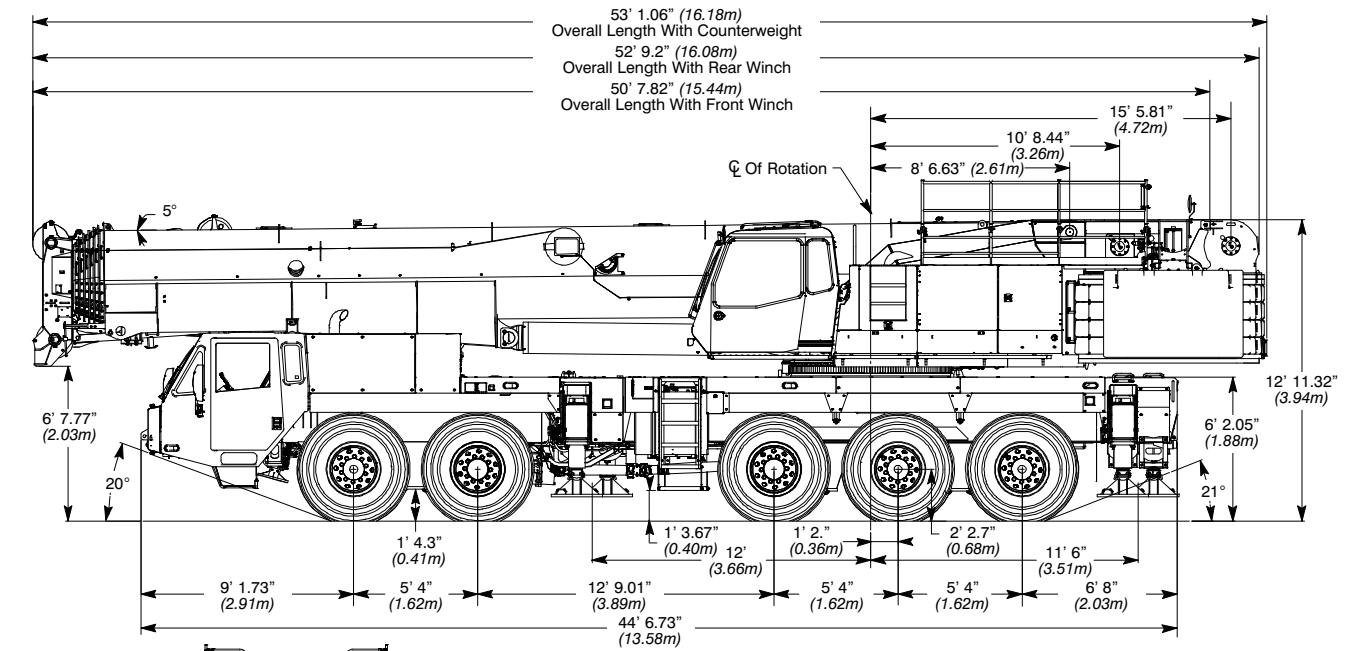
| Base crane with full tanks of fuel and no counterweight | Gross Vehicle Weight ⁽¹⁾ | Axle 1 | Axle 2 | Axle 3 | Axle 4 | Axle 5 | Dolly |
|--|-------------------------------------|--------|--------|--------|--------|--------|--------|
| | kg | kg | kg | kg | kg | kg | kg |
| | 60 816 | 9 357 | 9 152 | 9 839 | 10 149 | 10 065 | 12 254 |
| Nelson 2 - axle boom dolly ⁽²⁾ | 994 | 0 | 0 | 0 | 0 | 0 | 2 994 |
| Nelson 2 - axle boom dolly ⁽²⁾ | 4 264 | 0 | 0 | 0 | 0 | 0 | 4 264 |
| Driver in carrier cab | 113 | 80 | 80 | -15 | -15 | -15 | 0 |
| Remove pontoons | -195 | -7 | -7 | -61 | -61 | -61 | 0 |
| Ether injector | 2 | 2 | 2 | 0 | 0 | 0 | 0 |
| Rear pintle hook | 20 | -6 | -6 | 10 | 10 | 10 | 0 |
| 16.00R25 (445/95R25) tires (instead of standard) | -457 | -92 | -92 | -92 | -92 | -92 | 0 |
| Carrier cab strobe light | 2 | 2 | 2 | 0 | 0 | 0 | 0 |
| Hoist drum follower - main | 44 | 14 | 14 | 5 | 5 | 5 | 0 |
| Auxiliary winch with 725 ft (221m) of 7/8" (22mm) wire rope | 1 454 | 530 | 530 | 131 | 131 | 131 | 0 |
| Remove auxiliary winch with 725 ft (221m) of 7/8" (22mm) wire rope | -1 326 | -494 | -494 | -112 | -112 | -112 | 0 |
| Hoist drum follower - auxiliary | 44 | 19 | 19 | 2 | 2 | 2 | 0 |
| Remove 950 ft (289.5m) of wire rope from front (main) winch | -660 | -189 | -189 | -94 | -94 | -94 | 0 |
| Remove 725 ft (221m) of wire rope from rear (auxiliary) winch | -503 | -166 | -166 | -57 | -57 | -57 | 0 |
| Substitute 725 ft (221m) of rope with 950 ft (289.5m) of rope - rear (auxiliary) | 156 | 51 | 51 | 18 | 18 | 18 | 0 |
| Substitute 950 ft (289.5m) of rope with 725 ft (221m) of rope - front (main) | -156 | -44 | -44 | -22 | -22 | -22 | 0 |
| 360° mechanical swing lock | 68 | 27 | 27 | 5 | 5 | 5 | 0 |
| Boom launching option | 35 | -5 | -5 | 15 | 15 | 15 | 0 |
| Floodlight to the front of the boom base section | 3 | 0 | 0 | 0 | 0 | 0 | 3 |
| Fly mounting brackets to boom base section for fly options | 135 | 10 | 10 | 7 | 7 | 7 | 95 |
| 12 ft (3.65m) manual and hydraulically offsettable, lattice fly - stowed | 1 061 | -14 | -14 | -10 | -10 | -10 | 1 120 |
| 12-40 ft (3.65-12.2m) manual and hydraulically offsettable, two-piece (bi-fold) lattice fly - stowed | 1 759 | 66 | 66 | 50 | 50 | 50 | 1 479 |
| 12-40-67 ft (3.65-12.2-20.4m) manual and hydraulically offsettable, three-piece (bi-fold) lattice fly - stowed | 2 296 | 136 | 136 | 103 | 103 | 103 | 1 715 |
| Additional components for hydraulically offsettable fly | 192 | 10 | 10 | 8 | 8 | 8 | 148 |
| Auxiliary lifting sheave | 51 | -3 | -3 | -2 | -2 | -2 | 63 |
| 40 ton (36.3mt) 1 sheave hook block at boom head | 658 | 30 | 30 | 23 | 23 | 23 | 787 |
| 66 ton (60mt) 3 sheave hook block at boom head | 862 | -40 | -40 | -30 | -30 | -30 | 1 031 |
| 100 ton (91mt) 5 sheave hook block at boom head | 1 021 | -47 | -47 | -35 | -35 | -35 | 1 222 |
| 140 ton (127mt) 7 sheave hook block at boom head | 1 293 | -59 | -59 | -45 | -45 | -45 | 1 547 |
| 12 ton (10.9mt) hookball at boom head | 327 | -15 | -15 | -11 | -11 | -11 | 392 |

⁽¹⁾ Adjust gross vehicle weight and axle loading according to component weight. All weights are $\pm 3\%$.

⁽²⁾ Weights may vary.

| Tire | Maximum Axle Load @ 80.5kph Average Speed |
|--|---|
| 20.5R25 (525/80R25) on aluminum disc wheels | 12 702.4kg |
| 16.00R25 (445/95R25) on aluminum disc wheels | 13 255.8kg |

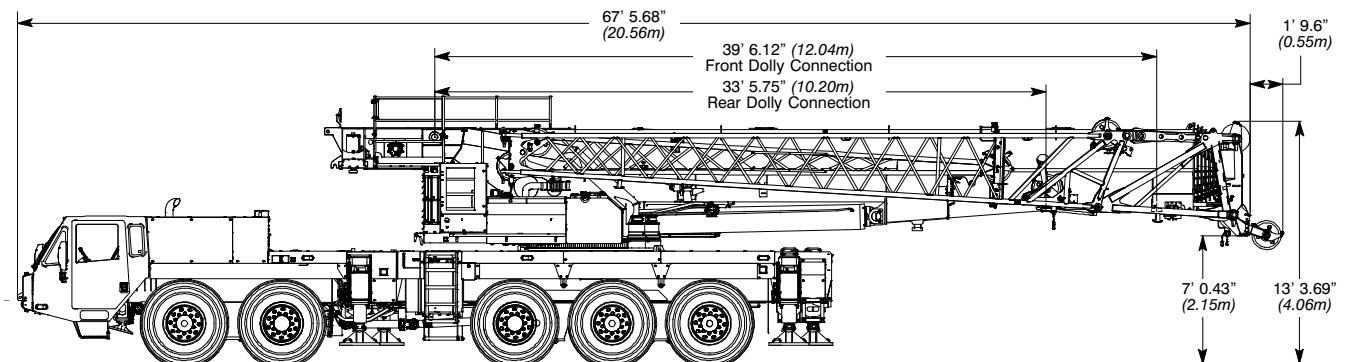
General Dimensions



| Turning Radius | 20.5R25 | | 16.00R25 | |
|-----------------------------------|---------|--------|----------|--------|
| | English | Metric | English | Metric |
| Wall to wall over carrier | 42' 0" | 12.8m | 41' 6" | 12.6m |
| Wall to wall over boom | 42' 6" | 12.9m | 42' 2" | 12.8m |
| Wall to wall over boom attachment | 44' 11" | 13.7m | 44' 6" | 13.5m |
| Curb to curb | 37' 1" | 11.3m | 36' 3" | 11.04m |
| Centerline of tire | 36' 2" | 11.0m | 35' 6" | 10.8m |

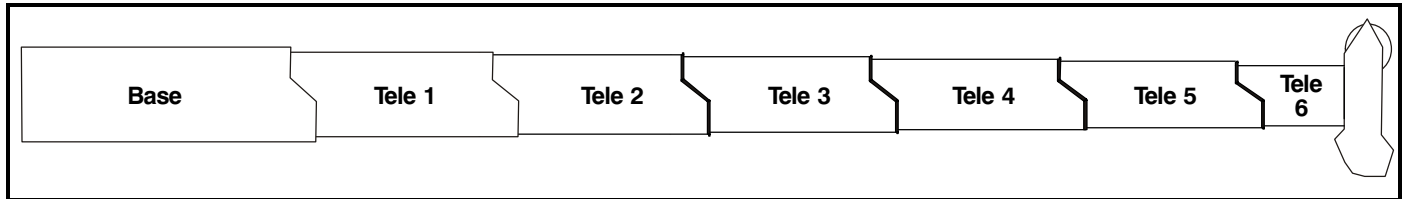
| Tail Swing | English | Metric |
|-------------------------|---------|--------|
| With auxiliary winch | 16' 11" | 5.1m |
| Without auxiliary winch | 14' 8" | 4.7m |
| With Counterweight | 17' 1" | 5.21m |

| Overall Width | English | Metric |
|--|---------|--------|
| With 14,000 lb (6 350kg) counterweight | 9' 10" | 3.0m |
| With 36,000–115,000 lb (16 329–52 390kg) counterweight | 10' 3" | 3.1m |
| With 156,500 lb (70 987kg) counterweight | 15' 2" | 4.6m |



Not To Scale

Boom Extend Modes



**EM1
ALL SECTIONS EXTEND 100%**

| Boom Length | | Telescope Length | | | | | |
|-------------|------|------------------|------|------|------|------|------|
| ft | m | T6 | T5 | T4 | T3 | T2 | T1 |
| 43.7 | 13.3 | | | | | | |
| 71.1 | 21.7 | 100% | | | | | |
| 99.6 | 30.3 | 100% | 100% | 0% | | | |
| 128.9 | 39.3 | 100% | 100% | 100% | 0% | | |
| 159.3 | 48.5 | 100% | 100% | 100% | 100% | 0% | |
| 190.5 | 58.1 | 100% | 100% | 100% | 100% | 100% | 0% |
| 206.8 | 63.0 | 100% | 100% | 100% | 100% | 100% | 50% |
| 223 | 68.0 | 100% | 100% | 100% | 100% | 100% | 100% |

**EM2
T6 50%, OTHERS 100%**

| Boom Length | | Telescope Length | | | | | |
|-------------|------|------------------|------|------|------|------|------|
| ft | m | T6 | T5 | T4 | T3 | T2 | T1 |
| 43.7 | 13.3 | | | | | | |
| 57.4 | 17.5 | 50% | 0% | 0% | | | |
| 85.8 | 26.2 | 50% | 100% | 0% | 0% | | |
| 115.2 | 35.1 | 50% | 100% | 100% | 0% | 0% | |
| 145.5 | 44.4 | 50% | 100% | 100% | 100% | 0% | 0% |
| 176.8 | 53.9 | 50% | 100% | 100% | 100% | 100% | 0% |
| 193.1 | 58.8 | 50% | 100% | 100% | 100% | 100% | 50% |
| 209.3 | 63.8 | 50% | 100% | 100% | 100% | 100% | 100% |

**EM3
T2,T3,T4 50%, OTHERS 100%**

| Boom Length | | Telescope Length | | | | | |
|-------------|------|------------------|------|-----|-----|-----|------|
| ft | m | T6 | T5 | T4 | T3 | T2 | T1 |
| 43.7 | 13.3 | | | | | | |
| 71.1 | 21.7 | 100% | 0% | 0% | 0% | 0% | |
| 99.5 | 30.3 | 100% | 100% | 0% | 0% | 0% | |
| 114.2 | 34.8 | 100% | 100% | 50% | 0% | 0% | |
| 129.4 | 39.4 | 100% | 100% | 50% | 50% | 0% | 0% |
| 145.0 | 44.2 | 100% | 100% | 50% | 50% | 50% | 0% |
| 161.3 | 49.2 | 100% | 100% | 50% | 50% | 50% | 50% |
| 177.5 | 54.1 | 100% | 100% | 50% | 50% | 50% | 100% |

**EM4
T6,T1 100%, OTHERS 50%**

| Boom Length | | Telescope Length | | | | | |
|-------------|------|------------------|-----|-----|-----|-----|------|
| ft | m | T6 | T5 | T4 | T3 | T2 | T1 |
| 43.7 | 13.3 | | | | | | |
| 71.1 | 21.7 | 100% | 0% | 0% | 0% | 0% | |
| 85.3 | 26.0 | 100% | 50% | 0% | 0% | 0% | |
| 100.0 | 30.5 | 100% | 50% | 50% | 0% | 0% | |
| 115.2 | 35.1 | 100% | 50% | 50% | 50% | 0% | 0% |
| 130.8 | 39.9 | 100% | 50% | 50% | 50% | 50% | 0% |
| 147.1 | 44.8 | 100% | 50% | 50% | 50% | 50% | 50% |
| 163.3 | 49.8 | 100% | 50% | 50% | 50% | 50% | 100% |

**EM5
ALL SECTIONS 50%**

| Boom Length | | Telescope Length | | | | | |
|-------------|------|------------------|-----|-----|-----|-----|-----|
| ft | m | T6 | T5 | T4 | T3 | T2 | T1 |
| 43.7 | 13.3 | | | | | | |
| 57.4 | 17.5 | 50% | 0% | | | | |
| 71.6 | 21.8 | 50% | 50% | 0% | | | |
| 86.3 | 26.3 | 50% | 50% | 50% | 0% | | |
| 101.5 | 30.9 | 50% | 50% | 50% | 50% | 0% | |
| 117.1 | 35.7 | 50% | 50% | 50% | 50% | 50% | 0% |
| 133.4 | 40.6 | 50% | 50% | 50% | 50% | 50% | 50% |

**EM6
T6, RETRACTED, T1 100%, OTHERS 50%**

| Boom Length | | Telescope Length | | | | | |
|-------------|------|------------------|-----|-----|-----|-----|------|
| ft | m | T6 | T5 | T4 | T3 | T2 | T1 |
| 43.7 | 13.3 | | | | | | |
| 57.9 | 17.7 | 0% | 50% | 0% | | | |
| 72.6 | 22.1 | 0% | 50% | 50% | 0% | | |
| 87.8 | 26.7 | 0% | 50% | 50% | 50% | 0% | |
| 103.4 | 31.5 | 0% | 50% | 50% | 50% | 50% | 0% |
| 119.6 | 36.5 | 0% | 50% | 50% | 50% | 50% | 50% |
| 135.9 | 41.4 | 0% | 50% | 50% | 50% | 50% | 100% |

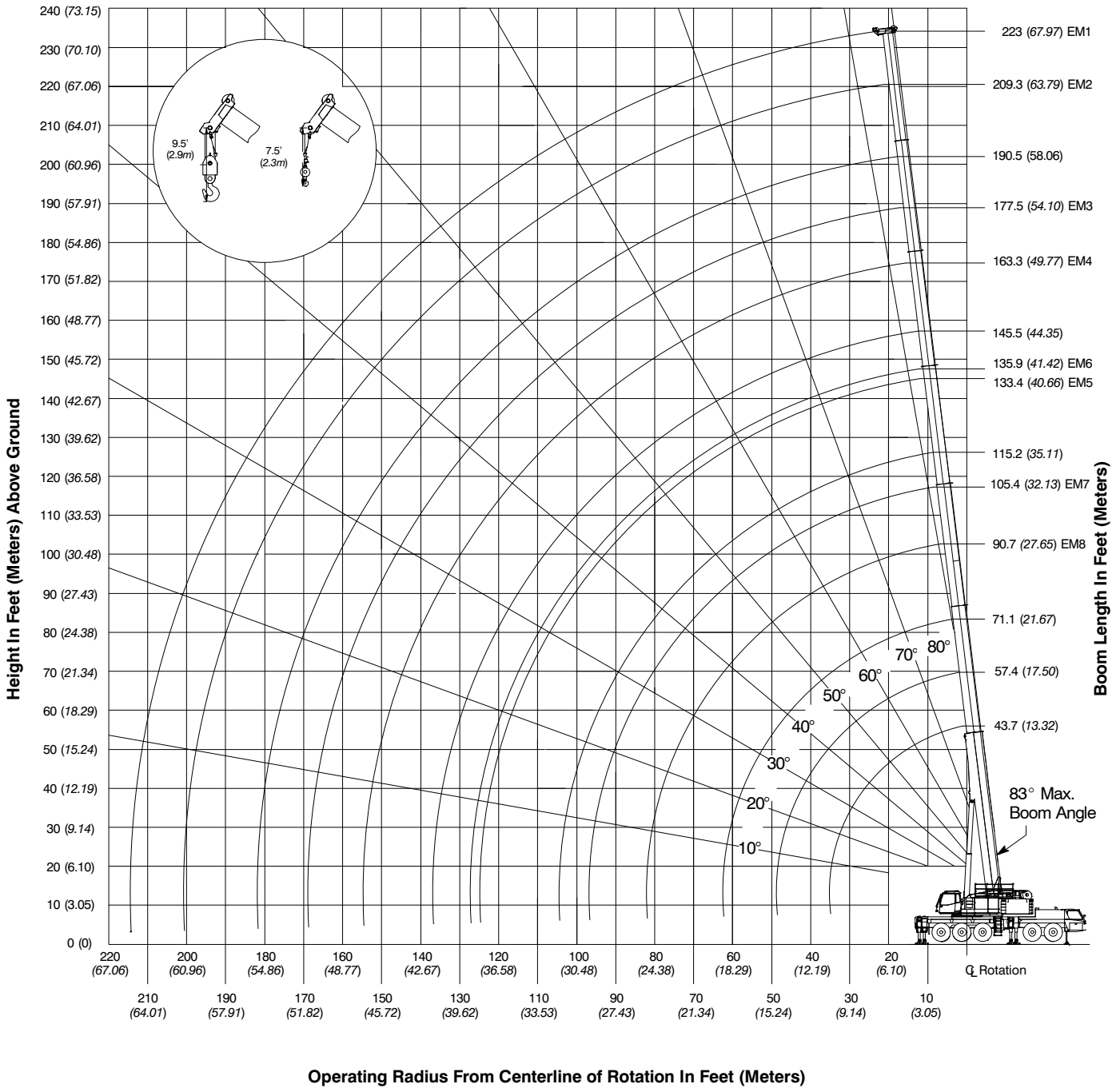
**EM7
T6,T5 RETRACTED, OTHERS 50%**

| Boom Length | | Telescope Length | | | | | |
|-------------|------|------------------|----|-----|-----|-----|-----|
| ft | m | T6 | T5 | T4 | T3 | T2 | T1 |
| 43.7 | 13.3 | | | | | | |
| 58.4 | 17.8 | 0% | 0% | 50% | 0% | 0% | 0% |
| 73.5 | 22.4 | 0% | 0% | 50% | 50% | 0% | 0% |
| 89.2 | 27.2 | 0% | 0% | 50% | 50% | 50% | 0% |
| 105.4 | 32.1 | 0% | 0% | 50% | 50% | 50% | 50% |

**EM8
T6, T5, T4 RETRACTED, OTHERS 50%**

| Boom Length | | Telescope Length | | | | | |
|-------------|------|------------------|----|----|-----|-----|-----|
| ft | m | T6 | T5 | T4 | T3 | T2 | T1 |
| 43.7 | 13.3 | | | | | | |
| 58.9 | 17.9 | 0% | 0% | 0% | 50% | 0% | 0% |
| 74.5 | 22.7 | 0% | 0% | 0% | 50% | 50% | 0% |
| 90.7 | 27.7 | 0% | 0% | 0% | 50% | 50% | 50% |

Working Range Diagram – Main Boom



Main Boom Lift Capacity Charts – Standard

| 0 lb Counterweight - Fully Extended Outriggers - 360° Rotation (All Capacities Are Listed In Pounds) | | | | | | | | | | |
|---|------------------|-----------|-----------|-----------|------------|-------------|-------------|-----------|-------------|-------------|
| Radius (ft) | Boom Length (ft) | | | | | | | | | Radius (ft) |
| | 43.7 | 57.4-58.9 | 71.1-74.5 | 85.3-90.7 | 99.6-105.4 | 114.2-119.7 | 128.9-135.9 | 145-147.1 | 159.3-161.3 | |
| 10 | 324,000 | 303,000 | 268,900 | 225,200 | | | | | | 10 |
| 12 | 290,800 | 293,400 | 268,900 | 225,200 | | | | | | 12 |
| 15 | 237,700 | 242,400 | 241,600 | 211,500 | 170,500 | | | | | 15 |
| 20 | 147,000 | 154,400 | 156,500 | 156,100 | 153,900 | 142,800 | 102,900 | | | 20 |
| 25 | 99,700 | 108,800 | 112,900 | 114,300 | 113,900 | 110,000 | 102,900 | 84,500 | 66,000 | 25 |
| 30 | 62,900 | 72,100 | 77,200 | 77,400 | 80,200 | 79,400 | 77,500 | 74,600 | 66,000 | 30 |
| 35 | 42,600 | 51,600 | 56,100 | 58,200 | 58,700 | 59,900 | 59,200 | 57,500 | 55,000 | 35 |
| 40 | | 38,500 | 42,900 | 44,800 | 46,200 | 46,500 | 46,600 | 44,300 | 42,000 | 40 |
| 45 | | 29,500 | 33,900 | 35,600 | 36,900 | 37,100 | 37,300 | 35,000 | 36,200 | 45 |
| 50 | | 18,900 | 27,200 | 29,000 | 30,300 | 30,500 | 30,700 | 28,600 | 29,600 | 50 |
| 55 | | | 22,000 | 24,000 | 25,100 | 25,300 | 25,500 | 23,500 | 24,500 | 55 |
| 60 | | | 18,000 | 19,900 | 21,100 | 21,300 | 21,400 | 19,500 | 20,500 | 60 |
| 65 | | | 7,400 | 16,700 | 17,800 | 18,000 | 18,100 | 16,400 | 17,200 | 65 |
| 70 | | | | 13,900 | 15,300 | 15,500 | 15,600 | 13,800 | 14,800 | 70 |
| 75 | | | | 11,700 | 12,900 | 13,200 | 13,400 | 11,500 | 12,500 | 75 |
| 80 | | | | 3,100 | 11,000 | 11,300 | 11,500 | 9,700 | 10,600 | 80 |
| 85 | | | | | 9,300 | 9,600 | 9,800 | 8,000 | 9,000 | 85 |
| 90 | | | | | 7,900 | 8,100 | 8,400 | 6,600 | 7,500 | 90 |
| 95 | | | | | | 6,800 | 7,100 | 5,400 | 6,300 | 95 |
| 100 | | | | | | 5,700 | 5,900 | 4,300 | 5,200 | 100 |
| 105 | | | | | | 4,800 | 4,900 | 3,300 | 4,200 | 105 |
| 110 | | | | | | | 4,000 | 2,400 | 3,300 | 110 |
| 115 | | | | | | | 3,200 | | 2,500 | 115 |
| 120 | | | | | | | 2,500 | | | 120 |

Note: Capacities depict multiple boom modes.

This information is not for crane operation. Operator must refer to the in-cab information for crane operation. Rated lifting capacities shown on fully extended outriggers do not exceed 85% of the tipping loads.

| 36,000 lb Counterweight - Fully Extended Outriggers - 360° Rotation (All Capacities Are Listed In Pounds) | | | | | | | | | | | | | | |
|--|------------------|-----------|-----------|-----------|------------|-------------|-------------|-----------|-------------|-------------|-------------|-------------|----------------|-----|
| Radius (ft) | Boom Length (ft) | | | | | | | | | | | | Radius (ft) | |
| | 43.7 | 57.4-58.9 | 71.1-74.5 | 85.3-90.7 | 99.6-105.4 | 114.2-119.7 | 128.9-135.9 | 145-147.1 | 159.3-163.3 | 176.8-177.5 | 190.5-193.1 | 206.8-209.3 | | 223 |
| 10 | 331,300 | 303,000 | 268,900 | 225,200 | | | | | | | | | | 10 |
| 12 | 297,500 | 299,900 | 268,900 | 225,200 | | | | | | | | | | 12 |
| 15 | 257,100 | 260,200 | 252,900 | 211,500 | 170,500 | | | | | | | | | 15 |
| 20 | 193,000 | 200,100 | 199,100 | 196,900 | 170,500 | 142,800 | 102,900 | | | | | | | 20 |
| 25 | 135,900 | 142,900 | 145,300 | 145,100 | 143,300 | 140,300 | 119,000 | 84,500 | 70,200 | | | | | 25 |
| 30 | 102,600 | 110,400 | 114,000 | 115,000 | 114,400 | 110,000 | 106,000 | 84,500 | 70,200 | 55,200 | 35,500 | | | 30 |
| 35 | 78,500 | 86,900 | 90,100 | 91,100 | 90,800 | 89,200 | 86,800 | 84,500 | 70,200 | 55,200 | 45,600 | 34,300 | | 35 |
| 40 | | 68,300 | 71,600 | 72,600 | 72,300 | 72,200 | 72,600 | 70,300 | 68,700 | 55,200 | 45,600 | 36,700 | 30,100 | 40 |
| 45 | | 54,700 | 58,100 | 59,100 | 61,200 | 60,600 | 59,200 | 57,800 | 58,000 | 55,200 | 45,600 | 36,700 | 30,100 | 45 |
| 50 | | 40,700 | 49,000 | 50,800 | 51,200 | 50,700 | 50,700 | 50,200 | 48,200 | 47,200 | 45,600 | 36,700 | 30,100 | 50 |
| 55 | | | 41,200 | 43,100 | 43,500 | 43,500 | 43,800 | 42,500 | 40,500 | 40,400 | 38,900 | 36,700 | 30,100 | 55 |
| 60 | | | 35,100 | 37,000 | 37,400 | 38,300 | 37,700 | 36,400 | 36,400 | 34,400 | 35,400 | 34,300 | 30,100 | 60 |
| 65 | | | 22,900 | 32,100 | 33,400 | 33,500 | 33,700 | 31,700 | 32,700 | 29,900 | 30,800 | 29,500 | 28,300 | 65 |
| 70 | | | | 28,000 | 29,300 | 29,500 | 29,600 | 27,700 | 28,700 | 25,900 | 26,800 | 25,500 | 24,300 | 70 |
| 75 | | | | 24,600 | 25,900 | 26,100 | 26,200 | 24,400 | 25,300 | 22,500 | 23,500 | 22,100 | 21,000 | 75 |
| 80 | | | | 15,200 | 22,900 | 23,200 | 23,300 | 21,500 | 22,400 | 19,700 | 20,600 | 19,300 | 18,200 | 80 |
| 85 | | | | | 20,400 | 20,700 | 20,800 | 19,000 | 19,900 | 17,200 | 18,200 | 17,200 | 16,100 | 85 |
| 90 | | | | | 18,300 | 18,500 | 18,700 | 17,100 | 17,800 | 15,400 | 16,300 | 15,000 | 14,000 | 90 |
| 95 | | | | | 7,400 | 16,700 | 16,900 | 15,200 | 16,100 | 13,500 | 14,400 | 13,200 | 12,100 | 95 |
| 100 | | | | | | 15,000 | 15,200 | 13,500 | 14,400 | 11,900 | 12,800 | 11,500 | 10,500 | 100 |
| 105 | | | | | | | 13,500 | 13,700 | 12,100 | 12,900 | 10,400 | 11,300 | 10,100 | 105 |
| 110 | | | | | | | 5,000 | 12,300 | 10,700 | 11,600 | 9,100 | 10,000 | 8,700 | 110 |
| 115 | | | | | | | | 11,100 | 9,500 | 10,400 | 7,900 | 8,800 | 7,600 | 115 |
| 120 | | | | | | | | 10,000 | 8,400 | 9,300 | 6,800 | 7,700 | 6,500 | 120 |
| 125 | | | | | | | | | 7,400 | 8,300 | 5,800 | 6,700 | 5,500 | 125 |
| 130 | | | | | | | | | 6,500 | 7,400 | 4,900 | 5,800 | 4,600 | 130 |
| 135 | | | | | | | | | 5,700 | 6,500 | 4,100 | 5,000 | 3,800 | 135 |
| 140 | | | | | | | | | | 5,700 | 3,300 | 4,200 | 3,100 | 140 |
| 145 | | | | | | | | | | 5,000 | 2,600 | 3,500 | 2,400 | 145 |
| 150 | | | | | | | | | | 4,400 | | 2,900 | | 150 |
| 155 | | | | | | | | | | | | 2,200 | | 155 |

Note: Capacities depict multiple boom modes.

This information is not for crane operation. Operator must refer to the in-cab information for crane operation. Rated lifting capacities shown on fully extended outriggers do not exceed 85% of the tipping loads.

Main Boom Lift Capacity Charts – Optional

| 80,000 lb Counterweight - Fully Extended Outriggers - 360° Rotation (All Capacities Are Listed In Pounds) | | | | | | | | | | | | | | |
|--|------------------|-----------|-----------|-----------|------------|-------------|-------------|-----------|-------------|-------------|-------------|-------------|-------------|-----|
| Radius (ft) | Boom Length (ft) | | | | | | | | | | | | Radius (ft) | |
| | 43.7 | 57.4-58.9 | 71.1-74.5 | 85.3-90.7 | 99.6-105.4 | 114.2-119.7 | 128.9-135.9 | 145-147.1 | 159.3-163.3 | 176.8-177.5 | 190.5-193.1 | 206.8-209.3 | | 223 |
| 10 | 337,700 | 303,000 | 268,900 | 225,200 | | | | | | | | | | 10 |
| 12 | 305,400 | 302,400 | 268,900 | 225,200 | | | | | | | | | | 12 |
| 15 | 264,300 | 267,100 | 252,900 | 211,500 | 170,500 | | | | | | | | | 15 |
| 20 | 214,100 | 217,600 | 215,200 | 211,500 | 170,500 | 142,800 | 102,900 | | | | | | | 20 |
| 25 | 172,100 | 177,100 | 176,900 | 176,000 | 168,800 | 142,800 | 119,000 | 84,500 | 70,200 | | | | | 25 |
| 30 | 135,300 | 142,300 | 142,100 | 140,800 | 143,000 | 140,100 | 113,200 | 84,500 | 70,200 | 55,200 | 35,500 | | | 30 |
| 35 | 107,500 | 114,100 | 116,700 | 117,100 | 115,600 | 113,200 | 102,900 | 84,500 | 70,200 | 55,200 | 45,600 | 34,300 | | 35 |
| 40 | | 95,300 | 96,800 | 97,300 | 96,200 | 98,200 | 95,900 | 79,300 | 70,200 | 55,200 | 45,600 | 36,700 | 30,100 | 40 |
| 45 | | 80,500 | 83,900 | 85,100 | 85,000 | 83,700 | 81,500 | 74,300 | 70,200 | 55,200 | 45,600 | 36,700 | 30,100 | 45 |
| 50 | | 65,200 | 72,300 | 73,500 | 73,300 | 72,000 | 70,000 | 69,900 | 66,000 | 55,200 | 45,600 | 36,700 | 30,100 | 50 |
| 55 | | | 62,400 | 63,600 | 63,300 | 62,100 | 62,500 | 61,600 | 60,000 | 54,800 | 45,600 | 36,700 | 30,100 | 55 |
| 60 | | | 54,300 | 55,400 | 55,200 | 54,700 | 55,500 | 53,500 | 52,000 | 52,000 | 44,800 | 36,700 | 30,100 | 60 |
| 65 | | | 41,400 | 48,800 | 48,800 | 50,400 | 49,100 | 47,200 | 47,700 | 46,600 | 42,200 | 36,700 | 30,100 | 65 |
| 70 | | | | 43,400 | 44,200 | 44,900 | 43,700 | 42,700 | 42,700 | 41,200 | 39,500 | 36,700 | 30,100 | 70 |
| 75 | | | | 38,800 | 40,600 | 40,300 | 39,100 | 39,800 | 38,100 | 36,600 | 36,700 | 35,500 | 30,100 | 75 |
| 80 | | | | 29,800 | 36,600 | 36,300 | 35,200 | 35,900 | 34,400 | 33,600 | 33,100 | 34,000 | 30,100 | 80 |
| 85 | | | | | 33,300 | 33,000 | 33,100 | 32,700 | 31,000 | 30,900 | 30,500 | 30,500 | 29,400 | 85 |
| 90 | | | | | 30,400 | 30,000 | 30,800 | 29,700 | 28,000 | 27,900 | 28,800 | 27,500 | 26,400 | 90 |
| 95 | | | | | 19,400 | 27,300 | 28,200 | 27,000 | 25,300 | 25,300 | 26,200 | 24,900 | 23,800 | 95 |
| 100 | | | | | | 25,400 | 25,800 | 24,700 | 23,000 | 22,900 | 23,800 | 22,600 | 21,500 | 100 |
| 105 | | | | | | 24,200 | 23,600 | 22,600 | 20,900 | 20,900 | 21,700 | 20,500 | 19,400 | 105 |
| 110 | | | | | | 15,100 | 21,800 | 20,700 | 19,700 | 19,000 | 19,900 | 18,600 | 17,500 | 110 |
| 115 | | | | | | | 20,100 | 19,000 | 18,700 | 17,300 | 18,200 | 16,900 | 16,200 | 115 |
| 120 | | | | | | | 18,600 | 17,400 | 17,800 | 16,000 | 16,900 | 15,700 | 14,700 | 120 |
| 125 | | | | | | | 9,400 | 16,200 | 16,900 | 14,600 | 15,500 | 14,300 | 13,300 | 125 |
| 130 | | | | | | | | 14,900 | 15,800 | 13,400 | 14,200 | 13,000 | 12,000 | 130 |
| 135 | | | | | | | | 13,700 | 14,600 | 12,200 | 13,100 | 11,900 | 10,900 | 135 |
| 140 | | | | | | | | | 13,500 | 11,100 | 12,000 | 10,800 | 9,800 | 140 |
| 145 | | | | | | | | | 12,500 | 10,100 | 11,000 | 9,800 | 8,800 | 145 |
| 150 | | | | | | | | | 11,600 | 9,100 | 10,000 | 8,900 | 7,900 | 150 |
| 155 | | | | | | | | | | 8,300 | 9,200 | 8,000 | 7,000 | 155 |
| 160 | | | | | | | | | | 7,500 | 8,400 | 7,200 | 6,300 | 160 |
| 165 | | | | | | | | | | 6,800 | 7,600 | 6,500 | 5,500 | 165 |
| 170 | | | | | | | | | | | 6,900 | 5,800 | 4,800 | 170 |
| 175 | | | | | | | | | | | 6,300 | 5,100 | 4,200 | 175 |
| 180 | | | | | | | | | | | 5,700 | 4,500 | 3,500 | 180 |
| 185 | | | | | | | | | | | | 3,900 | 3,000 | 185 |
| 190 | | | | | | | | | | | | 3,400 | 2,400 | 190 |

Note: Capacities depict multiple boom modes.

This information is not for crane operation. Operator must refer to the in-cab information for crane operation. Rated lifting capacities shown on fully extended outriggers do not exceed 85% of the tipping loads.

| 102,000 lb Counterweight - Fully Extended Outriggers - 360° Rotation (All Capacities Are Listed In Pounds) | | | | | | | | | | | | | | |
|---|------------------|-----------|-----------|-----------|------------|-------------|-------------|-----------|-------------|-------------|-------------|-------------|----------------|-----|
| Radius (ft) | Boom Length (ft) | | | | | | | | | | | | Radius (ft) | |
| | 43.7 | 57.4-58.9 | 71.1-74.5 | 85.3-90.7 | 99.6-105.4 | 114.2-119.7 | 128.9-135.9 | 145-147.1 | 159.3-163.3 | 176.8-177.5 | 190.5-193.1 | 206.8-209.3 | | 223 |
| 10 | 340,300 | 303,000 | 268,900 | 225,200 | | | | | | | | | | 10 |
| 12 | 307,900 | 302,400 | 268,900 | 225,200 | | | | | | | | | | 12 |
| 15 | 267,900 | 269,800 | 252,900 | 211,500 | 170,500 | | | | | | | | | 15 |
| 20 | 217,100 | 220,600 | 218,100 | 211,500 | 170,500 | 142,800 | 102,900 | | | | | | | 20 |
| 25 | 181,200 | 185,000 | 184,300 | 183,900 | 168,800 | 142,800 | 119,000 | 84,500 | 70,200 | | | | | 25 |
| 30 | 148,300 | 153,500 | 153,400 | 152,700 | 150,800 | 142,800 | 113,200 | 84,500 | 70,200 | 55,200 | 35,500 | | | 30 |
| 35 | 121,500 | 128,200 | 128,300 | 127,400 | 129,600 | 126,900 | 102,900 | 84,500 | 70,200 | 55,200 | 45,600 | 34,300 | | 35 |
| 40 | | 105,900 | 108,400 | 108,800 | 107,700 | 105,400 | 102,900 | 79,300 | 70,200 | 55,200 | 45,600 | 36,700 | 30,100 | 40 |
| 45 | | 90,700 | 92,100 | 92,600 | 91,600 | 93,700 | 91,400 | 74,300 | 70,200 | 55,200 | 45,600 | 36,700 | 30,100 | 45 |
| 50 | | 74,200 | 79,600 | 80,000 | 81,200 | 81,200 | 79,100 | 69,900 | 66,000 | 55,200 | 45,600 | 36,700 | 30,100 | 50 |
| 55 | | | 71,200 | 72,400 | 72,200 | 71,100 | 69,100 | 66,000 | 61,200 | 54,800 | 45,600 | 36,700 | 30,100 | 55 |
| 60 | | | 63,000 | 64,100 | 64,100 | 63,000 | 61,100 | 62,300 | 56,800 | 52,000 | 44,800 | 36,700 | 30,100 | 60 |
| 65 | | | 49,400 | 57,200 | 57,100 | 56,000 | 55,800 | 55,600 | 53,000 | 49,400 | 42,200 | 36,700 | 30,100 | 65 |
| 70 | | | | 51,200 | 51,100 | 50,100 | 51,500 | 49,600 | 48,100 | 46,800 | 39,500 | 36,700 | 30,100 | 70 |
| 75 | | | | 46,000 | 45,900 | 46,300 | 46,300 | 44,500 | 43,100 | 43,800 | 37,400 | 36,700 | 30,100 | 75 |
| 80 | | | | 36,500 | 41,400 | 43,000 | 41,800 | 40,000 | 40,900 | 39,400 | 35,500 | 34,900 | 30,100 | 80 |
| 85 | | | | | 37,800 | 39,100 | 38,000 | 36,300 | 37,000 | 35,600 | 33,700 | 32,800 | 30,100 | 85 |
| 90 | | | | | 36,200 | 35,700 | 34,600 | 34,600 | 33,900 | 32,500 | 32,100 | 30,900 | 30,100 | 90 |
| 95 | | | | | 25,000 | 32,800 | 31,800 | 32,600 | 31,000 | 29,600 | 29,700 | 29,300 | 29,200 | 95 |
| 100 | | | | | | 30,200 | 29,100 | 30,000 | 28,400 | 27,200 | 27,100 | 27,900 | 26,900 | 100 |
| 105 | | | | | | 27,900 | 27,300 | 27,600 | 26,000 | 25,900 | 24,800 | 25,600 | 24,500 | 105 |
| 110 | | | | | | 20,000 | 26,100 | 25,500 | 23,900 | 23,900 | 23,700 | 23,500 | 22,500 | 110 |
| 115 | | | | | | | 24,600 | 23,600 | 22,000 | 22,000 | 22,600 | 21,600 | 20,600 | 115 |
| 120 | | | | | | | 23,000 | 21,800 | 20,300 | 20,300 | 21,100 | 19,900 | 18,900 | 120 |
| 125 | | | | | | | 13,700 | 20,300 | 18,700 | 18,700 | 19,600 | 18,400 | 17,300 | 125 |
| 130 | | | | | | | | 18,900 | 17,300 | 17,300 | 18,100 | 17,000 | 16,200 | 130 |
| 135 | | | | | | | | 17,600 | 16,100 | 16,100 | 17,000 | 15,900 | 14,900 | 135 |
| 140 | | | | | | | | | 14,900 | 14,900 | 15,800 | 14,600 | 13,700 | 140 |
| 145 | | | | | | | | | 13,900 | 13,700 | 14,600 | 13,500 | 12,500 | 145 |
| 150 | | | | | | | | | 13,300 | 12,700 | 13,600 | 12,500 | 11,500 | 150 |
| 155 | | | | | | | | | | 11,700 | 12,600 | 11,500 | 10,500 | 155 |
| 160 | | | | | | | | | | 10,800 | 11,700 | 10,600 | 9,600 | 160 |
| 165 | | | | | | | | | | 10,000 | 10,800 | 9,700 | 8,700 | 165 |
| 170 | | | | | | | | | | | 10,000 | 8,900 | 7,900 | 170 |
| 175 | | | | | | | | | | | 9,300 | 8,200 | 7,100 | 175 |
| 180 | | | | | | | | | | | 8,600 | 7,400 | 6,300 | 180 |
| 185 | | | | | | | | | | | | 6,700 | 5,600 | 185 |
| 190 | | | | | | | | | | | | 6,000 | 4,900 | 190 |
| 195 | | | | | | | | | | | | 3,400 | 4,300 | 195 |
| 200 | | | | | | | | | | | | 2,800 | 3,700 | 200 |
| 205 | | | | | | | | | | | | | 3,200 | 205 |

Note: Capacities depict multiple boom modes.

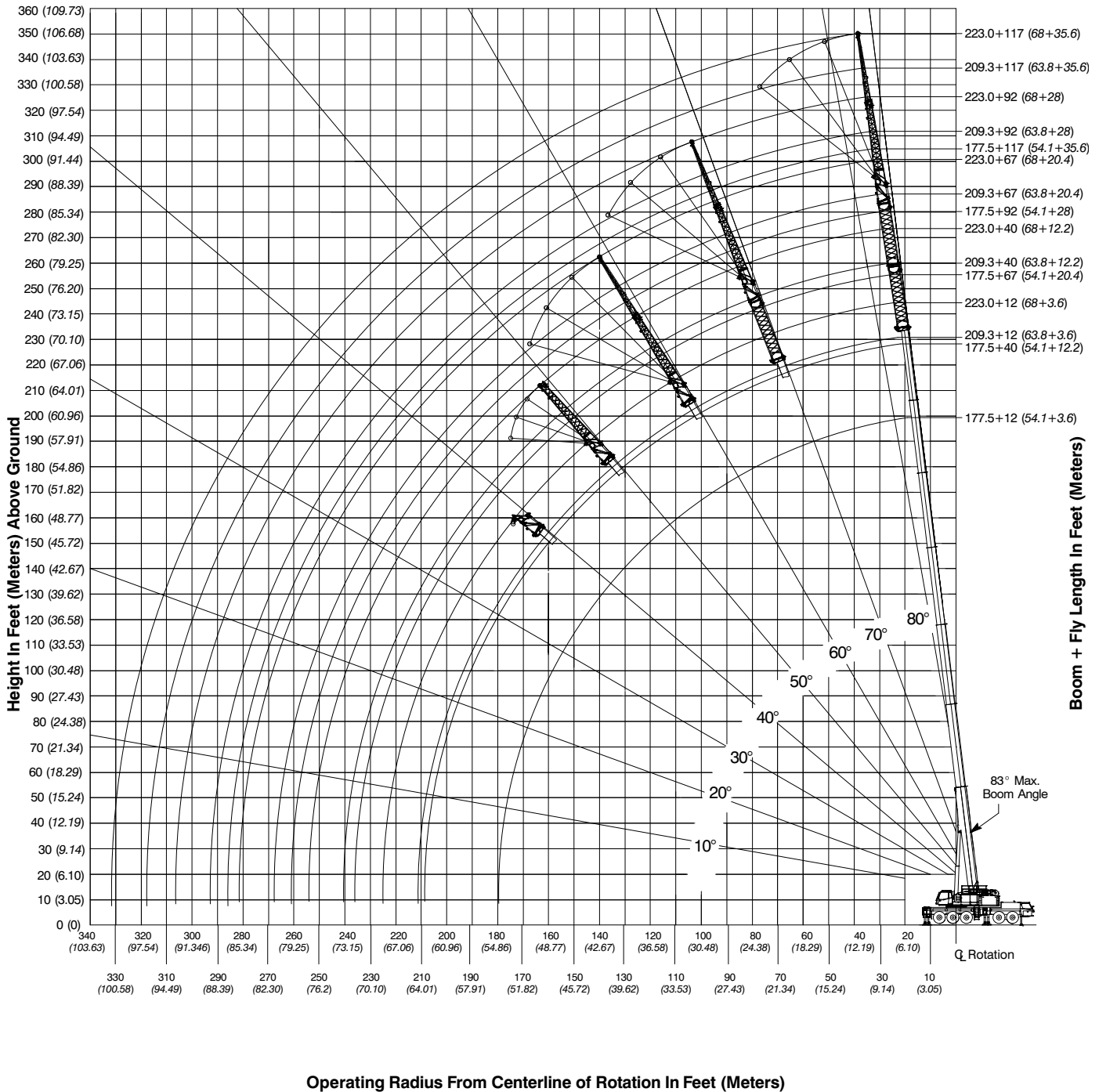
This information is not for crane operation. Operator must refer to the in-cab information for crane operation. Rated lifting capacities shown on fully extended outriggers do not exceed 85% of the tipping loads.

| 156,500 lb Counterweight - Fully Extended Outriggers - 360° Rotation (All Capacities Are Listed In Pounds) | | | | | | | | | | | | | | | |
|---|------------------|-----------|-----------|-----------|------------|-------------|-------------|-----------|-------------|-------------|-------------|-------------|-------------|--------|-----|
| Radius (ft) | Boom Length (ft) | | | | | | | | | | | | Radius (ft) | | |
| | 43.7 | 57.4-58.9 | 71.1-74.5 | 85.3-90.7 | 99.6-105.4 | 114.2-119.7 | 128.9-135.9 | 145-147.1 | 159.3-163.3 | 176.8-177.5 | 190.5-193.1 | 206.8-209.3 | | 223 | |
| 8 | 550,000* | | | | | | | | | | | | | 8 | |
| 10 | 350,000 | 303,000 | 268,900 | 225,200 | | | | | | | | | | 10 | |
| 12 | 313,900 | 302,400 | 268,900 | 225,200 | | | | | | | | | | 12 | |
| 15 | 274,100 | 275,700 | 252,900 | 211,500 | 170,500 | | | | | | | | | 15 | |
| 20 | 224,600 | 226,900 | 225,300 | 211,500 | 170,500 | 142,800 | 102,900 | | | | | | | 20 | |
| 25 | 187,500 | 191,300 | 189,000 | 190,100 | 168,800 | 142,800 | 119,000 | 84,500 | 70,200 | | | | | 25 | |
| 30 | 159,900 | 163,900 | 162,700 | 163,000 | 159,400 | 142,800 | 113,200 | 84,500 | 70,200 | 55,200 | 35,500 | | | 30 | |
| 35 | 138,500 | 142,700 | 142,600 | 142,000 | 140,500 | 141,800 | 102,900 | 84,500 | 70,200 | 55,200 | 45,600 | 34,300 | | 35 | |
| 40 | | 125,900 | 125,900 | 125,300 | 124,000 | 125,200 | 102,900 | 79,300 | 70,200 | 55,200 | 45,600 | 36,700 | 30,100 | 40 | |
| 45 | | 110,100 | 110,100 | 109,600 | 111,500 | 109,700 | 102,900 | 74,300 | 70,200 | 55,200 | 45,600 | 36,700 | 30,100 | 45 | |
| 50 | | 94,800 | 97,300 | 96,800 | 98,700 | 97,000 | 96,100 | 69,900 | 66,000 | 55,200 | 45,600 | 36,700 | 30,100 | 50 | |
| 55 | | | 88,600 | 86,200 | 88,100 | 86,500 | 88,100 | 66,000 | 61,200 | 54,800 | 45,600 | 36,700 | 30,100 | 55 | |
| 60 | | | 79,800 | 80,100 | 79,300 | 78,000 | 79,400 | 62,300 | 56,800 | 52,000 | 44,800 | 36,700 | 30,100 | 60 | |
| 65 | | | 66,300 | 71,700 | 70,800 | 72,900 | 71,000 | 59,100 | 53,000 | 49,400 | 42,200 | 36,700 | 30,100 | 65 | |
| 70 | | | | 64,500 | 63,700 | 65,800 | 63,900 | 56,300 | 49,500 | 46,800 | 39,500 | 36,700 | 30,100 | 70 | |
| 75 | | | | 58,400 | 57,700 | 59,600 | 57,800 | 53,700 | 46,400 | 43,900 | 37,400 | 36,700 | 30,100 | 75 | |
| 80 | | | | 50,200 | 54,500 | 54,300 | 52,400 | 51,400 | 43,500 | 41,300 | 35,500 | 34,900 | 30,100 | 80 | |
| 85 | | | | | 50,900 | 49,800 | 48,000 | 49,200 | 41,000 | 39,000 | 33,700 | 32,800 | 30,100 | 85 | |
| 90 | | | | | 46,900 | 45,700 | 44,000 | 45,500 | 38,700 | 36,800 | 32,100 | 30,900 | 30,100 | 90 | |
| 95 | | | | | 36,400 | 42,100 | 42,200 | 41,900 | 36,500 | 34,800 | 30,600 | 29,300 | 29,200 | 95 | |
| 100 | | | | | | | 38,900 | 40,500 | 38,600 | 34,600 | 32,900 | 29,200 | 27,900 | 27,600 | 100 |
| 105 | | | | | | | 36,100 | 37,600 | 35,700 | 32,900 | 31,200 | 27,800 | 26,700 | 26,100 | 105 |
| 110 | | | | | | | 29,800 | 34,900 | 33,300 | 31,600 | 29,700 | 26,600 | 25,500 | 24,700 | 110 |
| 115 | | | | | | | | 32,700 | 30,900 | 30,400 | 28,200 | 25,500 | 24,300 | 23,400 | 115 |
| 120 | | | | | | | | 29,400 | 28,700 | 29,300 | 26,800 | 24,400 | 23,300 | 22,200 | 120 |
| 125 | | | | | | | | 22,000 | 26,700 | 27,600 | 25,500 | 23,200 | 22,300 | 21,000 | 125 |
| 130 | | | | | | | | | 24,900 | 25,800 | 24,300 | 22,000 | 21,400 | 20,000 | 130 |
| 135 | | | | | | | | | 23,300 | 24,100 | 22,700 | 21,000 | 20,400 | 19,000 | 135 |
| 140 | | | | | | | | | | 22,600 | 21,200 | 19,900 | 19,600 | 18,000 | 140 |
| 145 | | | | | | | | | | 21,200 | 19,700 | 19,000 | 18,800 | 17,100 | 145 |
| 150 | | | | | | | | | | 19,800 | 18,400 | 18,100 | 18,100 | 16,300 | 150 |
| 155 | | | | | | | | | | | 17,300 | 17,200 | 17,400 | 15,500 | 155 |
| 160 | | | | | | | | | | | 16,100 | 16,200 | 16,600 | 14,800 | 160 |
| 165 | | | | | | | | | | | 15,000 | 15,100 | 15,900 | 14,000 | 165 |
| 170 | | | | | | | | | | | | 14,100 | 15,000 | 13,400 | 170 |
| 175 | | | | | | | | | | | | 13,200 | 14,000 | 12,700 | 175 |
| 180 | | | | | | | | | | | | 12,700 | 13,100 | 12,100 | 180 |
| 185 | | | | | | | | | | | | | 12,300 | 11,200 | 185 |
| 190 | | | | | | | | | | | | | 11,500 | 10,400 | 190 |
| 195 | | | | | | | | | | | | | 8,700 | 9,600 | 195 |
| 200 | | | | | | | | | | | | | 7,800 | 8,900 | 200 |
| 205 | | | | | | | | | | | | | | 8,200 | 205 |

Note: Capacities depict multiple boom modes.
 * Over rear intermediate outriggers additional equipment required.

This information is not for crane operation. Operator must refer to the in-cab information for crane operation. Rated lifting capacities shown on fully extended outriggers do not exceed 85% of the tipping loads.

Working Range Diagram – Main Boom + Fly



Manual & Hydraulic Offset Fly Attachment Lift Capacity Charts – Optional

| 36,000 lb Counterweight - Fully Extended Outriggers - 360° Rotation (All Capacities Are Listed In Pounds) | | | | | | | | | | | | | | |
|--|------------------|--------|--------|--------|--------|-------------|-------------|-----------|-------------|-------------|-------------|-------------|-------------|-----|
| Main Boom + 12 ft Offset Fly (Manual Offsets 2°, 15°, 30°, 45° & Hydraulic Offsets 2° - 45°) | | | | | | | | | | | | | | |
| Radius (ft) | Boom Length (ft) | | | | | | | | | | | | Radius (ft) | |
| | 43.7 | 57.4 | 71.1 | 85.8 | 99.6 | 114.2-115.2 | 128.9-129.4 | 145-145.5 | 159.3-161.3 | 176.8-177.5 | 190.5-193.1 | 206.8-209.3 | | 223 |
| 10 | 69,600 | 69,600 | 69,500 | 69,400 | | | | | | | | | | 10 |
| 12 | 69,600 | 69,600 | 69,500 | 69,400 | | | | | | | | | | 12 |
| 15 | 69,600 | 69,600 | 69,500 | 69,400 | 69,300 | 58,400 | 44,000 | | | | | | | 15 |
| 20 | 69,600 | 69,600 | 69,500 | 69,400 | 69,300 | 58,400 | 50,200 | 52,100 | 33,800 | | | | | 20 |
| 25 | 69,600 | 69,600 | 69,500 | 69,400 | 63,600 | 58,400 | 50,200 | 52,100 | 53,600 | 46,600 | 36,700 | | | 25 |
| 30 | 67,500 | 69,600 | 65,100 | 64,000 | 56,800 | 58,400 | 50,200 | 52,100 | 53,600 | 46,600 | 36,500 | 31,900 | | 30 |
| 35 | 63,300 | 69,600 | 58,400 | 57,700 | 51,000 | 55,000 | 50,200 | 52,100 | 53,600 | 46,600 | 36,200 | 31,400 | 25,900 | 35 |
| 40 | 58,300 | 66,700 | 52,000 | 52,300 | 46,100 | 49,900 | 50,200 | 52,100 | 53,600 | 46,600 | 36,200 | 31,400 | 25,700 | 40 |
| 45 | 53,600 | 57,200 | 46,900 | 47,600 | 42,000 | 45,500 | 48,600 | 51,500 | 53,600 | 46,600 | 36,200 | 31,400 | 25,700 | 45 |
| 50 | | 47,400 | 42,600 | 43,700 | 38,900 | 42,000 | 45,100 | 47,900 | 47,000 | 45,300 | 36,200 | 31,400 | 25,700 | 50 |
| 55 | | 39,900 | 39,400 | 40,700 | 35,800 | 39,000 | 42,000 | 41,500 | 39,400 | 37,700 | 36,200 | 31,400 | 25,700 | 55 |
| 60 | | | 36,100 | 36,400 | 33,200 | 36,300 | 36,800 | 35,400 | 33,700 | 33,500 | 32,000 | 30,700 | 25,700 | 60 |
| 65 | | | 31,400 | 31,600 | 30,800 | 32,800 | 32,100 | 30,800 | 31,600 | 28,700 | 29,500 | 28,100 | 25,700 | 65 |
| 70 | | | 27,500 | 27,700 | 28,800 | 28,800 | 28,700 | 26,800 | 27,500 | 24,700 | 25,500 | 24,100 | 22,900 | 70 |
| 75 | | | | 24,300 | 25,500 | 25,400 | 25,300 | 23,400 | 24,200 | 21,400 | 22,200 | 20,800 | 19,600 | 75 |
| 80 | | | | 21,500 | 22,600 | 22,500 | 22,400 | 20,500 | 21,300 | 18,600 | 19,400 | 18,000 | 16,800 | 80 |
| 85 | | | | 19,100 | 20,200 | 20,000 | 19,900 | 18,100 | 18,800 | 16,400 | 16,900 | 15,900 | 14,800 | 85 |
| 90 | | | | | 18,000 | 17,900 | 17,800 | 16,200 | 16,900 | 14,300 | 15,100 | 13,800 | 12,700 | 90 |
| 95 | | | | | 16,300 | 16,200 | 16,100 | 14,300 | 15,000 | 12,400 | 13,200 | 11,900 | 10,800 | 95 |
| 100 | | | | | 14,700 | 14,500 | 14,400 | 12,600 | 13,400 | 10,800 | 11,600 | 10,300 | 9,200 | 100 |
| 105 | | | | | | 13,000 | 12,900 | 11,200 | 11,900 | 9,300 | 10,100 | 8,800 | 7,700 | 105 |
| 110 | | | | | | 11,700 | 11,600 | 9,800 | 10,500 | 8,000 | 8,800 | 7,500 | 6,400 | 110 |
| 115 | | | | | | 10,600 | 10,400 | 8,700 | 9,300 | 6,800 | 7,600 | 6,300 | 5,300 | 115 |
| 120 | | | | | | | 9,400 | 7,600 | 8,300 | 5,800 | 6,500 | 5,300 | 4,200 | 120 |
| 125 | | | | | | | 8,400 | 6,600 | 7,300 | 4,800 | 5,500 | 4,300 | 3,200 | 125 |
| 130 | | | | | | | 7,600 | 5,700 | 6,400 | 3,900 | 4,600 | 3,400 | 2,400 | 130 |
| 135 | | | | | | | | 4,900 | 5,600 | 3,100 | 3,800 | 2,600 | | 135 |
| 140 | | | | | | | | 4,200 | 4,800 | 2,400 | 3,100 | | | 140 |
| 145 | | | | | | | | 3,600 | 4,100 | | 2,400 | | | 145 |
| 150 | | | | | | | | | 3,500 | | | | | 150 |
| 155 | | | | | | | | | 2,900 | | | | | 155 |
| 160 | | | | | | | | | 2,400 | | | | | 160 |

Note: Capacities depict multiple boom modes.

This information is not for crane operation. Operator must refer to the in-cab information for crane operation. Rated lifting capacities shown on fully extended outriggers do not exceed 85% of the tipping loads.

**156,500 lb Counterweight - Fully Extended Outriggers - 360° Rotation
(All Capacities Are Listed In Pounds)**

Main Boom + 12 ft Offset Fly (Manual Offsets 2°, 15°, 30°, 45° & Hydraulic Offsets 2° - 45°)

| Radius (ft) | Boom Length (ft) | | | | | | | | | | | | | Radius (ft) |
|-------------|------------------|--------|--------|--------|--------|-------------|-------------|-----------|-------------|-------------|-------------|-------------|--------|-------------|
| | 43.7 | 57.4 | 71.1 | 85.8 | 99.6 | 114.2-115.2 | 128.9-129.4 | 145-145.5 | 159.3-161.3 | 176.8-177.5 | 190.5-193.1 | 206.8-209.3 | 223 | |
| 10 | 69,600 | 69,600 | 69,500 | 69,400 | | | | | | | | | | 10 |
| 12 | 69,600 | 69,600 | 69,500 | 69,400 | | | | | | | | | | 12 |
| 15 | 69,600 | 69,600 | 69,500 | 69,400 | 69,300 | 58,400 | 44,000 | | | | | | | 15 |
| 20 | 69,600 | 69,600 | 69,500 | 69,400 | 69,300 | 58,400 | 50,200 | 52,100 | 33,800 | | | | | 20 |
| 25 | 69,600 | 69,600 | 69,500 | 69,400 | 63,600 | 58,400 | 50,200 | 52,100 | 53,600 | 46,600 | 36,700 | | | 25 |
| 30 | 67,500 | 69,600 | 65,100 | 64,000 | 56,800 | 58,400 | 50,200 | 52,100 | 53,600 | 46,600 | 36,500 | 31,900 | | 30 |
| 35 | 63,300 | 69,600 | 58,400 | 57,700 | 51,000 | 55,000 | 50,200 | 52,100 | 53,600 | 46,600 | 36,200 | 31,400 | 25,900 | 35 |
| 40 | 58,300 | 66,700 | 52,000 | 52,300 | 46,100 | 49,900 | 50,200 | 52,100 | 53,600 | 46,600 | 36,200 | 31,400 | 25,700 | 40 |
| 45 | 55,100 | 63,300 | 46,900 | 47,600 | 42,000 | 45,500 | 48,600 | 51,500 | 53,600 | 46,600 | 36,200 | 31,400 | 25,700 | 45 |
| 50 | | 59,200 | 42,600 | 43,700 | 38,900 | 42,000 | 45,100 | 47,900 | 50,300 | 46,600 | 36,200 | 31,400 | 25,700 | 50 |
| 55 | | 56,400 | 39,400 | 40,700 | 35,800 | 39,000 | 42,000 | 44,800 | 47,200 | 46,600 | 36,200 | 31,400 | 25,700 | 55 |
| 60 | | | 36,300 | 37,700 | 33,200 | 36,300 | 39,300 | 42,000 | 44,400 | 45,900 | 36,200 | 31,400 | 25,700 | 60 |
| 65 | | | 33,600 | 35,100 | 30,800 | 33,900 | 36,900 | 39,600 | 41,900 | 43,500 | 36,200 | 31,400 | 25,700 | 65 |
| 70 | | | 31,200 | 32,600 | 28,800 | 31,800 | 34,700 | 37,400 | 39,600 | 41,200 | 36,200 | 31,400 | 25,700 | 70 |
| 75 | | | | 30,300 | 26,900 | 29,900 | 32,700 | 35,300 | 37,600 | 39,200 | 34,700 | 31,400 | 25,700 | 75 |
| 80 | | | | 28,300 | 25,300 | 28,200 | 30,900 | 33,500 | 35,700 | 37,400 | 32,800 | 31,400 | 25,700 | 80 |
| 85 | | | | 26,600 | 23,800 | 26,600 | 29,300 | 31,800 | 34,100 | 35,700 | 31,000 | 31,100 | 25,700 | 85 |
| 90 | | | | | 22,500 | 25,200 | 27,800 | 30,300 | 32,500 | 34,100 | 29,400 | 29,200 | 25,700 | 90 |
| 95 | | | | | 21,300 | 23,900 | 26,500 | 28,900 | 31,100 | 32,700 | 27,900 | 27,500 | 25,700 | 95 |
| 100 | | | | | 20,200 | 22,700 | 25,300 | 27,600 | 29,700 | 31,000 | 26,600 | 25,800 | 25,700 | 100 |
| 105 | | | | | | 21,500 | 24,100 | 26,400 | 28,500 | 29,300 | 25,300 | 24,300 | 24,400 | 105 |
| 110 | | | | | | 20,600 | 23,100 | 25,300 | 27,400 | 27,800 | 24,100 | 23,000 | 23,000 | 110 |
| 115 | | | | | | 19,600 | 22,000 | 24,300 | 26,300 | 26,300 | 23,000 | 22,000 | 21,700 | 115 |
| 120 | | | | | | | 21,100 | 23,400 | 25,300 | 25,000 | 21,900 | 20,900 | 20,500 | 120 |
| 125 | | | | | | | 20,200 | 22,400 | 24,400 | 23,700 | 20,700 | 19,900 | 19,400 | 125 |
| 130 | | | | | | | 19,400 | 21,600 | 23,600 | 22,500 | 19,800 | 19,100 | 18,400 | 130 |
| 135 | | | | | | | | 20,700 | 22,800 | 21,400 | 19,000 | 18,200 | 17,400 | 135 |
| 140 | | | | | | | | 20,000 | 21,800 | 20,300 | 18,200 | 17,500 | 16,400 | 140 |
| 145 | | | | | | | | 19,300 | 20,400 | 18,800 | 17,400 | 16,700 | 15,500 | 145 |
| 150 | | | | | | | | | 19,000 | 17,500 | 16,500 | 16,000 | 14,700 | 150 |
| 155 | | | | | | | | | 17,800 | 16,400 | 15,700 | 15,300 | 13,900 | 155 |
| 160 | | | | | | | | | 16,800 | 15,300 | 14,900 | 14,700 | 13,100 | 160 |
| 165 | | | | | | | | | | 14,200 | 14,100 | 14,100 | 12,400 | 165 |
| 170 | | | | | | | | | | 13,200 | 13,100 | 13,600 | 11,800 | 170 |
| 175 | | | | | | | | | | 12,200 | 12,100 | 12,900 | 11,100 | 175 |
| 180 | | | | | | | | | | | 11,200 | 12,000 | 10,500 | 180 |
| 185 | | | | | | | | | | | 10,500 | 11,200 | 9,900 | 185 |
| 190 | | | | | | | | | | | 10,000 | 10,400 | 9,200 | 190 |
| 195 | | | | | | | | | | | 6,600 | 9,600 | 8,400 | 195 |
| 200 | | | | | | | | | | | | 8,900 | 7,700 | 200 |
| 205 | | | | | | | | | | | | 8,200 | 7,000 | 205 |
| 210 | | | | | | | | | | | | | 6,400 | 210 |
| 215 | | | | | | | | | | | | | 5,800 | 215 |
| 220 | | | | | | | | | | | | | 5,200 | 220 |

Note: Capacities depict multiple boom modes.

This information is not for crane operation. Operator must refer to the in-cab information for crane operation. Rated lifting capacities shown on fully extended outriggers do not exceed 85% of the tipping loads.

Manual Offset Fly Attachment Lift Capacity Charts – Optional

36,000 lb Counterweight - Fully Extended Outriggers - 360° Rotation
 (All Capacities Are Listed In Pounds)

| 223 ft Main Boom Length | | | | | | | | | |
|-------------------------|-------------------------|--------|--------|--------|-------------------------|--------|-------|-------|-------------|
| Radius (ft) | 40 ft Manual Offset Fly | | | | 67 ft Manual Offset Fly | | | | Radius (ft) |
| | 2° | 15° | 30° | 45° | 2° | 15° | 30° | 45° | |
| 40 | | | | | | | | | 40 |
| 45 | 14,900 | | | | | | | | 45 |
| 50 | 14,900 | | | | 10,100 | | | | 50 |
| 55 | 14,900 | 14,800 | | | 10,100 | | | | 55 |
| 60 | 14,900 | 14,800 | | | 10,100 | | | | 60 |
| 65 | 14,900 | 14,800 | 14,600 | | 10,100 | | | | 65 |
| 70 | 14,900 | 14,800 | 14,600 | | 10,100 | 10,100 | | | 70 |
| 75 | 14,900 | 14,800 | 14,600 | 14,300 | 10,100 | 10,100 | | | 75 |
| 80 | 14,900 | 14,800 | 14,600 | 14,300 | 10,100 | 10,100 | | | 80 |
| 85 | 14,900 | 14,800 | 14,600 | 14,300 | 10,100 | 10,100 | 9,900 | | 85 |
| 90 | 13,900 | 14,800 | 14,600 | 14,300 | 10,100 | 10,100 | 9,900 | | 90 |
| 95 | 12,000 | 13,300 | 14,600 | 14,300 | 10,100 | 10,100 | 9,900 | | 95 |
| 100 | 10,300 | 11,500 | 12,800 | 13,700 | 10,100 | 10,100 | 9,900 | 9,700 | 100 |
| 105 | 8,900 | 10,000 | 11,100 | 12,000 | 9,800 | 10,100 | 9,900 | 9,700 | 105 |
| 110 | 7,500 | 8,600 | 9,600 | 10,500 | 8,500 | 10,100 | 9,900 | 9,700 | 110 |
| 115 | 6,300 | 7,300 | 8,300 | 9,100 | 7,300 | 9,000 | 9,900 | 9,700 | 115 |
| 120 | 5,200 | 6,200 | 7,100 | 7,800 | 6,200 | 7,800 | 9,500 | 9,700 | 120 |
| 125 | 4,300 | 5,100 | 6,000 | 6,600 | 5,100 | 6,700 | 8,300 | 9,500 | 125 |
| 130 | 3,400 | 4,200 | 5,000 | 5,600 | 4,200 | 5,700 | 7,200 | 8,400 | 130 |
| 135 | 2,500 | 3,300 | 4,100 | 4,600 | 3,400 | 4,800 | 6,200 | 7,300 | 135 |
| 140 | | 2,500 | 3,200 | 3,700 | 2,600 | 3,900 | 5,200 | 6,300 | 140 |
| 145 | | | 2,400 | 2,900 | | 3,100 | 4,400 | 5,300 | 145 |
| 150 | | | | 2,100 | | 2,400 | 3,600 | 4,500 | 150 |
| 155 | | | | | | | 2,800 | 3,700 | 155 |
| 160 | | | | | | | 2,100 | 2,900 | 160 |
| 165 | | | | | | | | 2,200 | 165 |

This information is not for crane operation. Operator must refer to the in-cab information for crane operation. Rated lifting capacities shown on fully extended outriggers do not exceed 85% of the tipping loads.

| 156,500 lb Counterweight - Fully Extended Outriggers - 360° Rotation (All Capacities Are Listed In Pounds) | | | | | | | | | |
|---|-------------------------|--------|--------|--------|-------------------------|--------|-------|-------|----------------|
| 223 ft Main Boom Length | | | | | | | | | |
| Radius (ft) | 40 ft Manual Offset Fly | | | | 67 ft Manual Offset Fly | | | | Radius (ft) |
| | 2° | 15° | 30° | 45° | 2° | 15° | 30° | 45° | |
| 40 | | | | | | | | | 40 |
| 45 | 14,900 | | | | | | | | 45 |
| 50 | 14,900 | | | | 10,100 | | | | 50 |
| 55 | 14,900 | 14,800 | | | 10,100 | | | | 55 |
| 60 | 14,900 | 14,800 | | | 10,100 | | | | 60 |
| 65 | 14,900 | 14,800 | 14,600 | | 10,100 | | | | 65 |
| 70 | 14,900 | 14,800 | 14,600 | | 10,100 | 10,100 | | | 70 |
| 75 | 14,900 | 14,800 | 14,600 | 14,300 | 10,100 | 10,100 | | | 75 |
| 80 | 14,900 | 14,800 | 14,600 | 14,300 | 10,100 | 10,100 | | | 80 |
| 85 | 14,900 | 14,800 | 14,600 | 14,300 | 10,100 | 10,100 | 9,900 | | 85 |
| 90 | 14,900 | 14,800 | 14,600 | 14,300 | 10,100 | 10,100 | 9,900 | | 90 |
| 95 | 14,900 | 14,800 | 14,600 | 14,300 | 10,100 | 10,100 | 9,900 | | 95 |
| 100 | 14,900 | 14,800 | 14,600 | 14,300 | 10,100 | 10,100 | 9,900 | 9,700 | 100 |
| 105 | 14,900 | 14,800 | 14,600 | 14,300 | 10,100 | 10,100 | 9,900 | 9,700 | 105 |
| 110 | 14,900 | 14,800 | 14,600 | 14,300 | 10,100 | 10,100 | 9,900 | 9,700 | 110 |
| 115 | 14,900 | 14,800 | 14,600 | 14,300 | 10,100 | 10,100 | 9,900 | 9,700 | 115 |
| 120 | 14,900 | 14,800 | 14,600 | 14,300 | 10,100 | 10,100 | 9,900 | 9,700 | 120 |
| 125 | 14,900 | 14,800 | 14,600 | 14,300 | 10,100 | 10,100 | 9,900 | 9,500 | 125 |
| 130 | 14,900 | 14,800 | 14,600 | 14,300 | 10,100 | 10,100 | 9,900 | 9,400 | 130 |
| 135 | 14,900 | 14,800 | 14,600 | 14,300 | 10,100 | 10,100 | 9,900 | 9,300 | 135 |
| 140 | 14,900 | 14,800 | 14,600 | 14,300 | 10,100 | 10,100 | 9,900 | 9,200 | 140 |
| 145 | 14,900 | 14,800 | 14,600 | 14,300 | 10,100 | 10,100 | 9,900 | 9,100 | 145 |
| 150 | 14,300 | 14,600 | 14,600 | 14,300 | 10,100 | 10,100 | 9,900 | 9,000 | 150 |
| 155 | 13,500 | 13,800 | 14,000 | 14,200 | 10,100 | 10,100 | 9,800 | 8,900 | 155 |
| 160 | 12,800 | 13,100 | 13,300 | 13,500 | 10,100 | 10,100 | 9,600 | 8,800 | 160 |
| 165 | 12,100 | 12,400 | 12,600 | 12,700 | 10,100 | 10,100 | 9,500 | 8,700 | 165 |
| 170 | 11,400 | 11,700 | 11,900 | 12,100 | 10,100 | 10,100 | 9,300 | 8,600 | 170 |
| 175 | 10,800 | 11,100 | 11,300 | 11,400 | 10,100 | 10,100 | 9,200 | 8,500 | 175 |
| 180 | 10,200 | 10,500 | 10,700 | 10,800 | 10,100 | 10,100 | 9,100 | 8,500 | 180 |
| 185 | 9,700 | 9,900 | 10,100 | 10,200 | 9,600 | 10,000 | 9,000 | 8,400 | 185 |
| 190 | 9,100 | 9,400 | 9,500 | 9,600 | 9,100 | 9,500 | 8,800 | 8,300 | 190 |
| 195 | 8,600 | 8,800 | 9,000 | 9,100 | 8,500 | 9,000 | 8,700 | 8,300 | 195 |
| 200 | 8,100 | 8,300 | 8,500 | 8,500 | 8,100 | 8,500 | 8,600 | 8,200 | 200 |
| 205 | 7,600 | 7,800 | 8,000 | 8,000 | 7,600 | 8,000 | 8,300 | 8,200 | 205 |
| 210 | 7,200 | 7,400 | 7,500 | 7,500 | 7,200 | 7,500 | 7,800 | 8,000 | 210 |
| 215 | 6,600 | 6,900 | 7,000 | 7,100 | 6,700 | 7,100 | 7,400 | 7,500 | 215 |
| 220 | 6,000 | 6,300 | 6,500 | | 6,300 | 6,700 | 6,900 | 7,100 | 220 |
| 225 | 5,400 | 5,700 | 5,800 | | 5,900 | 6,300 | 6,500 | 6,600 | 225 |
| 230 | 4,900 | 5,100 | 5,200 | | 5,600 | 5,900 | 6,100 | 6,200 | 230 |
| 235 | 4,400 | 4,600 | 4,600 | | 5,100 | 5,500 | 5,700 | 5,700 | 235 |
| 240 | 3,900 | 4,000 | 4,100 | | 4,600 | 5,000 | 5,300 | 5,300 | 240 |
| 245 | 3,400 | 3,500 | | | 4,100 | 4,500 | 4,800 | | 245 |
| 250 | | | | | 3,600 | 4,000 | 4,300 | | 250 |
| 255 | | | | | 3,200 | 3,500 | 3,700 | | 255 |
| 260 | | | | | 2,800 | 3,100 | 3,200 | | 260 |
| 265 | | | | | 2,400 | 2,600 | 2,700 | | 265 |
| 270 | | | | | | 2,200 | | | 270 |

This information is not for crane operation. Operator must refer to the in-cab information for crane operation. Rated lifting capacities shown on fully extended outriggers do not exceed 85% of the tipping loads.

| 156,500 lb Counterweight - Fully Extended Outriggers - 360° Rotation (All Capacities Are Listed In Pounds) | | | | | | | | | |
|---|-------------------------|-------|-------|-------|--------------------------|-------|-------|-------|----------------|
| 223 ft Main Boom Length | | | | | | | | | |
| Radius (ft) | 92 ft Manual Offset Fly | | | | 117 ft Manual Offset Fly | | | | Radius (ft) |
| | 2° | 15° | 30° | 45° | 2° | 15° | 30° | 45° | |
| 60 | 7,100 | | | | | | | | 60 |
| 65 | 7,100 | | | | | | | | 65 |
| 70 | 7,100 | | | | 5,300 | | | | 70 |
| 75 | 7,100 | 7,000 | | | 5,300 | | | | 75 |
| 80 | 7,100 | 7,000 | | | 5,300 | | | | 80 |
| 85 | 7,100 | 7,000 | | | 5,300 | 5,300 | | | 85 |
| 90 | 7,100 | 7,000 | | | 5,300 | 5,300 | | | 90 |
| 95 | 7,100 | 7,000 | 6,800 | | 5,300 | 5,300 | | | 95 |
| 100 | 7,100 | 7,000 | 6,800 | | 5,300 | 5,300 | | | 100 |
| 105 | 7,100 | 7,000 | 6,800 | 6,600 | 5,300 | 5,300 | 5,100 | | 105 |
| 110 | 7,100 | 7,000 | 6,800 | 6,600 | 5,300 | 5,300 | 5,100 | | 110 |
| 115 | 7,100 | 7,000 | 6,800 | 6,600 | 5,300 | 5,300 | 5,100 | 4,900 | 115 |
| 120 | 7,100 | 7,000 | 6,800 | 6,600 | 5,300 | 5,300 | 5,100 | 4,900 | 120 |
| 125 | 7,100 | 7,000 | 6,800 | 6,600 | 5,300 | 5,300 | 5,100 | 4,900 | 125 |
| 130 | 7,100 | 7,000 | 6,800 | 6,600 | 5,300 | 5,300 | 5,100 | 4,900 | 130 |
| 135 | 7,100 | 7,000 | 6,800 | 6,600 | 5,300 | 5,300 | 5,100 | 4,900 | 135 |
| 140 | 7,100 | 7,000 | 6,800 | 6,600 | 5,300 | 5,300 | 5,100 | 4,900 | 140 |
| 145 | 7,100 | 7,000 | 6,800 | 6,600 | 5,300 | 5,300 | 5,100 | 4,900 | 145 |
| 150 | 7,100 | 7,000 | 6,800 | 6,600 | 5,300 | 5,300 | 5,100 | 4,900 | 150 |
| 155 | 7,100 | 7,000 | 6,800 | 6,600 | 5,300 | 5,300 | 5,100 | 4,900 | 155 |
| 160 | 7,100 | 7,000 | 6,800 | 6,600 | 5,300 | 5,300 | 5,100 | 4,900 | 160 |
| 165 | 7,100 | 7,000 | 6,800 | 6,600 | 5,300 | 5,300 | 5,100 | 4,900 | 165 |
| 170 | 7,100 | 7,000 | 6,800 | 6,600 | 5,300 | 5,300 | 5,100 | 4,900 | 170 |
| 175 | 7,100 | 7,000 | 6,800 | 6,600 | 5,300 | 5,300 | 5,100 | 4,900 | 175 |
| 180 | 7,100 | 7,000 | 6,800 | 6,600 | 5,300 | 5,300 | 5,100 | 4,900 | 180 |
| 185 | 7,100 | 7,000 | 6,800 | 6,600 | 5,300 | 5,300 | 5,100 | 4,900 | 185 |
| 190 | 7,100 | 7,000 | 6,800 | 6,600 | 5,300 | 5,300 | 5,100 | 4,900 | 190 |
| 195 | 7,100 | 7,000 | 6,800 | 6,600 | 5,300 | 5,300 | 5,100 | 4,800 | 195 |
| 200 | 7,100 | 7,000 | 6,800 | 6,600 | 5,300 | 5,300 | 4,900 | 4,700 | 200 |
| 205 | 6,900 | 7,000 | 6,800 | 6,600 | 5,300 | 5,100 | 4,700 | 4,600 | 205 |
| 210 | 6,500 | 6,900 | 6,700 | 6,500 | 5,300 | 4,900 | 4,600 | 4,400 | 210 |
| 215 | 6,100 | 6,500 | 6,600 | 6,300 | 5,200 | 4,800 | 4,500 | 4,300 | 215 |
| 220 | 5,700 | 6,100 | 6,400 | 6,200 | 5,000 | 4,600 | 4,300 | 4,200 | 220 |
| 225 | 5,300 | 5,700 | 6,000 | 6,100 | 4,600 | 4,400 | 4,200 | 4,100 | 225 |
| 230 | 4,900 | 5,300 | 5,600 | 5,700 | 4,200 | 4,300 | 4,100 | 4,000 | 230 |
| 235 | 4,600 | 4,900 | 5,200 | 5,300 | 3,900 | 4,200 | 3,900 | 3,900 | 235 |
| 240 | 4,200 | 4,500 | 4,800 | 4,900 | 3,600 | 3,900 | 3,800 | 3,700 | 240 |
| 245 | 3,900 | 4,200 | 4,400 | 4,500 | 3,200 | 3,600 | 3,700 | 3,600 | 245 |
| 250 | 3,500 | 3,900 | 4,100 | 4,200 | 2,900 | 3,300 | 3,600 | 3,500 | 250 |
| 255 | 3,100 | 3,500 | 3,800 | 3,800 | 2,600 | 3,000 | 3,200 | 3,400 | 255 |
| 260 | 2,600 | 3,100 | 3,400 | 3,400 | 2,300 | 2,600 | 2,900 | 3,000 | 260 |
| 265 | 2,200 | 2,600 | 2,900 | 2,900 | | 2,300 | 2,600 | 2,700 | 265 |
| 270 | | 2,200 | 2,500 | | | 2,100 | 2,300 | 2,400 | 270 |

This information is not for crane operation. Operator must refer to the in-cab information for crane operation. Rated lifting capacities shown on fully extended outriggers do not exceed 85% of the tipping loads.

Hydraulic Offset Fly Attachment Lift Capacity Charts – Optional

36,000 lb Counterweight - Fully Extended Outriggers - 360° Rotation
(All Capacities Are Listed In Pounds)

223 ft Main Boom Length

| Radius (ft) | 40 ft Hydraulic Offset Fly | | | 67 ft Hydraulic Offset Fly | | | Radius (ft) |
|-------------|----------------------------|-----------|-----------|----------------------------|-----------|-----------|-------------|
| | 2° - 15° | 15° - 30° | 30° - 45° | 2° - 15° | 15° - 30° | 30° - 45° | |
| 40 | 14,800 | | | | | | 40 |
| 45 | 14,800 | | | 10,100 | | | 45 |
| 50 | 14,800 | 14,800 | | 10,100 | | | 50 |
| 55 | 14,800 | 14,800 | | 10,100 | | | 55 |
| 60 | 14,800 | 14,600 | 14,600 | 10,100 | | | 60 |
| 65 | 14,800 | 14,600 | 14,600 | 10,000 | 10,000 | | 65 |
| 70 | 14,800 | 14,600 | 14,200 | 10,000 | 10,000 | | 70 |
| 75 | 14,800 | 14,600 | 14,200 | 10,000 | 10,000 | | 75 |
| 80 | 14,800 | 14,600 | 14,200 | 10,000 | 10,000 | | 80 |
| 85 | 14,800 | 14,600 | 14,200 | 10,000 | 9,900 | 9,900 | 85 |
| 90 | 13,900 | 14,600 | 14,200 | 10,000 | 9,900 | 9,900 | 90 |
| 95 | 12,000 | 13,300 | 14,200 | 10,000 | 9,900 | 9,900 | 95 |
| 100 | 10,300 | 11,500 | 12,800 | 10,000 | 9,900 | 9,700 | 100 |
| 105 | 8,900 | 10,000 | 11,100 | 9,800 | 9,900 | 9,700 | 105 |
| 110 | 7,500 | 8,600 | 9,600 | 8,500 | 9,900 | 9,700 | 110 |
| 115 | 6,300 | 7,300 | 8,300 | 7,300 | 9,000 | 9,700 | 115 |
| 120 | 5,200 | 6,200 | 7,100 | 6,200 | 7,800 | 9,500 | 120 |
| 125 | 4,300 | 5,100 | 6,000 | 5,100 | 6,700 | 8,300 | 125 |
| 130 | 3,400 | 4,200 | 5,000 | 4,200 | 5,700 | 7,200 | 130 |
| 135 | 2,500 | 3,300 | 4,100 | 3,400 | 4,800 | 6,200 | 135 |
| 140 | | 2,500 | 3,200 | 2,600 | 3,900 | 5,200 | 140 |
| 145 | | | 2,400 | | 3,100 | 4,400 | 145 |
| 150 | | | | | 2,400 | 3,600 | 150 |
| 155 | | | | | | 2,800 | 155 |
| 160 | | | | | | 2,100 | 160 |

This information is not for crane operation. Operator must refer to the in-cab information for crane operation. Rated lifting capacities shown on fully extended outriggers do not exceed 85% of the tipping loads.

| 156,500 lb Counterweight - Fully Extended Outriggers - 360° Rotation (All Capacities Are Listed In Pounds) | | | | | | | |
|---|----------------------------|-----------|-----------|----------------------------|-----------|-----------|-------------|
| 223 ft Main Boom Length | | | | | | | |
| Radius (ft) | 40 ft Hydraulic Offset Fly | | | 67 ft Hydraulic Offset Fly | | | Radius (ft) |
| | 2° - 15° | 15° - 30° | 30° - 45° | 2° - 15° | 15° - 30° | 30° - 45° | |
| 40 | 14,800 | | | | | | 40 |
| 45 | 14,800 | | | 10,100 | | | 45 |
| 50 | 14,800 | 14,800 | | 10,100 | | | 50 |
| 55 | 14,800 | 14,800 | | 10,100 | | | 55 |
| 60 | 14,800 | 14,600 | 14,600 | 10,100 | | | 60 |
| 65 | 14,800 | 14,600 | 14,600 | 10,000 | 10,000 | | 65 |
| 70 | 14,800 | 14,600 | 14,200 | 10,000 | 10,000 | | 70 |
| 75 | 14,800 | 14,600 | 14,200 | 10,000 | 10,000 | | 75 |
| 80 | 14,800 | 14,600 | 14,200 | 10,000 | 10,000 | | 80 |
| 85 | 14,800 | 14,600 | 14,200 | 10,000 | 9,900 | 9,900 | 85 |
| 90 | 14,800 | 14,600 | 14,200 | 10,000 | 9,900 | 9,900 | 90 |
| 95 | 14,800 | 14,600 | 14,200 | 10,000 | 9,900 | 9,900 | 95 |
| 100 | 14,800 | 14,600 | 14,200 | 10,000 | 9,900 | 9,700 | 100 |
| 105 | 14,800 | 14,600 | 14,200 | 10,000 | 9,900 | 9,700 | 105 |
| 110 | 14,800 | 14,600 | 14,200 | 10,000 | 9,900 | 9,700 | 110 |
| 115 | 14,800 | 14,600 | 14,200 | 10,000 | 9,900 | 9,700 | 115 |
| 120 | 14,800 | 14,600 | 14,200 | 10,000 | 9,900 | 9,700 | 120 |
| 125 | 14,800 | 14,600 | 14,200 | 10,000 | 9,900 | 9,500 | 125 |
| 130 | 14,800 | 14,600 | 14,200 | 10,000 | 9,900 | 9,400 | 130 |
| 135 | 14,800 | 14,600 | 14,200 | 10,000 | 9,900 | 9,300 | 135 |
| 140 | 14,800 | 14,600 | 14,200 | 10,000 | 9,900 | 9,200 | 140 |
| 145 | 14,800 | 14,600 | 14,200 | 10000 | 9,900 | 9,100 | 145 |
| 150 | 14,300 | 14,600 | 14,200 | 10,000 | 9,900 | 9,000 | 150 |
| 155 | 13,500 | 13,800 | 14,000 | 10,000 | 9,800 | 8,900 | 155 |
| 160 | 12,800 | 13,100 | 13,300 | 10,000 | 9,600 | 8,800 | 160 |
| 165 | 12,100 | 12,400 | 12,600 | 10,000 | 9,500 | 8,700 | 165 |
| 170 | 11,400 | 11,700 | 11,900 | 10,000 | 9,300 | 8,600 | 170 |
| 175 | 10,800 | 11,100 | 11,300 | 10,000 | 9,200 | 8,500 | 175 |
| 180 | 10,200 | 10,500 | 10,700 | 10,000 | 9,100 | 8,500 | 180 |
| 185 | 9,700 | 9,900 | 10,100 | 9,600 | 9,000 | 8,400 | 185 |
| 190 | 9,100 | 9,400 | 9,500 | 9,100 | 8,800 | 8,300 | 190 |
| 195 | 8,600 | 8,800 | 9,000 | 8,500 | 8,700 | 8,300 | 195 |
| 200 | 8,100 | 8,300 | 8,500 | 8,100 | 8,500 | 8,200 | 200 |
| 205 | 7,600 | 7,800 | 8,000 | 7,600 | 8,000 | 8,200 | 205 |
| 210 | 7,200 | 7,400 | 7,500 | 7,200 | 7,500 | 7,800 | 210 |
| 215 | 6,600 | 6,900 | 7,000 | 6,700 | 7,100 | 7,400 | 215 |
| 220 | 6,000 | 6,300 | 6,500 | 6,300 | 6,700 | 6,900 | 220 |
| 225 | 5,400 | 5,700 | 5,800 | 5,900 | 6,300 | 6,500 | 225 |
| 230 | 4,900 | 5,100 | 5,100 | 5,600 | 5,900 | 6,100 | 230 |
| 235 | 4,400 | 4,600 | 4,500 | 5,100 | 5,500 | 5,700 | 235 |
| 240 | 3,900 | 4,000 | 3,900 | 4,600 | 5,000 | 5,300 | 240 |
| 245 | 3,400 | 3,500 | | 4,100 | 4,500 | 4,800 | 245 |
| 250 | | | | 3,600 | 4,000 | 4,200 | 250 |
| 255 | | | | 3,200 | 3,500 | 3,600 | 255 |
| 260 | | | | 2,800 | 3,100 | 3,000 | 260 |
| 265 | | | | 2,400 | 2,600 | | 265 |
| 270 | | | | | 2,200 | | 270 |

This information is not for crane operation. Operator must refer to the in-cab information for crane operation. Rated lifting capacities shown on fully extended outriggers do not exceed 85% of the tipping loads.

156,500 lb Counterweight - Fully Extended Outriggers - 360° Rotation
(All Capacities Are Listed In Pounds)

223 ft Main Boom Length

| Radius (ft) | 92 ft Hydraulic Offset Fly | | | 117 ft Hydraulic Offset Fly | | | Radius (ft) |
|----------------|----------------------------|-----------|-----------|-----------------------------|-----------|-----------|----------------|
| | 2° - 15° | 15° - 30° | 30° - 45° | 2° - 15° | 15° - 30° | 30° - 45° | |
| 50 | 7,000 | | | | | | 50 |
| 55 | 7,000 | | | | | | 55 |
| 60 | 7,000 | | | 5,300 | | | 60 |
| 65 | 7,000 | | | 5,300 | | | 65 |
| 70 | 7,000 | 7,000 | | 5,300 | | | 70 |
| 75 | 7,000 | 7,000 | | 5,300 | | | 75 |
| 80 | 7,000 | 7,000 | | 5,200 | 5,200 | | 80 |
| 85 | 7,000 | 6,800 | 6,800 | 5,200 | 5,200 | | 85 |
| 90 | 7,000 | 6,800 | 6,800 | 5,200 | 5,200 | | 90 |
| 95 | 7,000 | 6,800 | 6,800 | 5,200 | 5,100 | 5,100 | 95 |
| 100 | 7,000 | 6,800 | 6,600 | 5,200 | 5,100 | 5,100 | 100 |
| 105 | 7,000 | 6,800 | 6,600 | 5,200 | 5,100 | 4,800 | 105 |
| 110 | 7,000 | 6,800 | 6,600 | 5,200 | 5,100 | 4,800 | 110 |
| 115 | 7,000 | 6,800 | 6,600 | 5,200 | 5,100 | 4,800 | 115 |
| 120 | 7,000 | 6,800 | 6,600 | 5,200 | 5,100 | 4,800 | 120 |
| 125 | 7,000 | 6,800 | 6,600 | 5,200 | 5,100 | 4,800 | 125 |
| 130 | 7,000 | 6,800 | 6,600 | 5,200 | 5,100 | 4,800 | 130 |
| 135 | 7,000 | 6,800 | 6,600 | 5,200 | 5,100 | 4,800 | 135 |
| 140 | 7,000 | 6,800 | 6,600 | 5,200 | 5,100 | 4,800 | 140 |
| 145 | 7,000 | 6,800 | 6,600 | 5,200 | 5,100 | 4,800 | 145 |
| 150 | 7,000 | 6,800 | 6,600 | 5,200 | 5,100 | 4,800 | 150 |
| 155 | 7,000 | 6,800 | 6,600 | 5,200 | 5,100 | 4,800 | 155 |
| 160 | 7,000 | 6,800 | 6,600 | 5,200 | 5,100 | 4,800 | 160 |
| 165 | 7,000 | 6,800 | 6,600 | 5,200 | 5,100 | 4,800 | 165 |
| 170 | 7,000 | 6,800 | 6,600 | 5,200 | 5,100 | 4,800 | 170 |
| 175 | 7,000 | 6,800 | 6,600 | 5,200 | 5,100 | 4,800 | 175 |
| 180 | 7,000 | 6,800 | 6,600 | 5,200 | 5,100 | 4,800 | 180 |
| 185 | 7,000 | 6,800 | 6,600 | 5,200 | 5,100 | 4,800 | 185 |
| 190 | 7,000 | 6,800 | 6,600 | 5,200 | 5,100 | 4,800 | 190 |
| 195 | 7,000 | 6,800 | 6,600 | 5,200 | 5,100 | 4,800 | 195 |
| 200 | 7,000 | 6,800 | 6,600 | 5,200 | 4,900 | 4,700 | 200 |
| 205 | 6,900 | 6,800 | 6,600 | 5,100 | 4,700 | 4,600 | 205 |
| 210 | 6,500 | 6,700 | 6,500 | 4,900 | 4,600 | 4,400 | 210 |
| 215 | 6,100 | 6,500 | 6,300 | 4,800 | 4,500 | 4,300 | 215 |
| 220 | 5,700 | 6,100 | 6,200 | 4,600 | 4,300 | 4,200 | 220 |
| 225 | 5,300 | 5,700 | 6,000 | 4,400 | 4,200 | 4,100 | 225 |
| 230 | 4,900 | 5,300 | 5,600 | 4,200 | 4,100 | 4,000 | 230 |
| 235 | 4,600 | 4,900 | 5,200 | 3,900 | 3,900 | 3,900 | 235 |
| 240 | 4,200 | 4,500 | 4,800 | 3,600 | 3,800 | 3,700 | 240 |
| 245 | 3,900 | 4,200 | 4,400 | 3,200 | 3,600 | 3,600 | 245 |
| 250 | 3,500 | 3,900 | 4,100 | 2,900 | 3,300 | 3,500 | 250 |
| 255 | 3,100 | 3,500 | 3,800 | 2,600 | 3,000 | 3,200 | 255 |
| 260 | 2,600 | 3,100 | 3,400 | 2,300 | 2,600 | 2,900 | 260 |
| 265 | 2,200 | 2,600 | 2,900 | | 2,300 | 2,600 | 265 |
| 270 | | 2,200 | 2,400 | | 2,100 | 2,300 | 270 |

This information is not for crane operation. Operator must refer to the in-cab information for crane operation. Rated lifting capacities shown on fully extended outriggers do not exceed 85% of the tipping loads.

Metric Main Boom Lift Capacity Charts

| 0t Counterweight - Fully Extended Outriggers - 360° Rotation (All Capacities Are Listed In Kilograms) | | | | | | | | | | |
|--|-----------------|------------|-----------|---------|-----------|-----------|-----------|-----------|-----------|---------------|
| Radius (m) | Boom Length (m) | | | | | | | | | Radius (m) |
| | 13.3 | 517.5-17.9 | 21.7-22.7 | 26-27.7 | 30.3-32.1 | 34.8-36.5 | 39.3-40.7 | 44.2-44.8 | 48.5-49.2 | |
| 3.0 | 148 300 | 137 400 | 121 900 | 102 100 | | | | | | 3.0 |
| 3.5 | 135 500 | 136 650 | 121 900 | 102 100 | | | | | | 3.5 |
| 4.0 | 123 300 | 125 300 | 121 450 | 102 050 | | | | | | 4.0 |
| 4.5 | 109 550 | 111 650 | 111 250 | 96 200 | 77 300 | | | | | 4.5 |
| 5.0 | 92 450 | 95 600 | 94 850 | 93 750 | 77 300 | | | | | 5.0 |
| 6.0 | 68 450 | 71 750 | 72 650 | 72 450 | 71 450 | 64 750 | 46 650 | | | 6.0 |
| 7.0 | 48 550 | 52 500 | 54 300 | 54 900 | 54 700 | 51 200 | 46 650 | | | 7.0 |
| 8.0 | 35 200 | 39 200 | 40 850 | 41 400 | 41 200 | 40 450 | 39 200 | 38 350 | 30 000 | 8.0 |
| 9.0 | 26 200 | 29 900 | 31 950 | 32 900 | 33 150 | 32 800 | 32 050 | 30 950 | 30 000 | 9.0 |
| 10.0 | 20 100 | 23 700 | 25 600 | 26 500 | 26 700 | 27 200 | 26 900 | 26 200 | 25 150 | 10.0 |
| 12.0 | | 15 950 | 17 700 | 18 500 | 19 050 | 19 150 | 19 200 | 18 250 | 17 800 | 12.0 |
| 14.0 | | 11 200 | 13 000 | 13 750 | 14 250 | 14 350 | 14 400 | 13 500 | 13 950 | 14.0 |
| 16.0 | | | 9 750 | 10 550 | 11 000 | 11 100 | 11 150 | 10 300 | 10 750 | 16.0 |
| 18.0 | | | 7 300 | 8 200 | 8 700 | 8 800 | 8 800 | 8 000 | 8 450 | 18.0 |
| 20.0 | | | 2 100 | 6 350 | 6 950 | 7 050 | 7 150 | 6 300 | 6 750 | 20.0 |
| 22.0 | | | | 4 900 | 5 500 | 5 650 | 5 700 | 4 850 | 5 300 | 22.0 |
| 24.0 | | | | 2 050 | 4 300 | 4 450 | 4 550 | 3 750 | 4 150 | 24.0 |
| 26.0 | | | | | 3 350 | 3 500 | 3 600 | 2 800 | 3 250 | 26.0 |
| 28.0 | | | | | 1 350 | 2 700 | 2 800 | 2 050 | 2 450 | 28.0 |
| 30.0 | | | | | | 2 000 | 2 100 | 1 400 | 1 800 | 30.0 |
| 32.0 | | | | | | 1,450 | 1,550 | | 1,250 | 32.0 |
| 34.0 | | | | | | | 1,050 | | | 34.0 |

Note: Capacities depict multiple boom modes.

This information is not for crane operation. Operator must refer to the in-cab information for crane operation. Rated lifting capacities shown on fully extended outriggers do not exceed 75% of the tipping loads.

**16.3t Counterweight - Fully Extended Outriggers - 360° Rotation
(All Capacities Are Listed In Kilograms)**

| Radius (m) | Boom Length (m) | | | | | | | | | | | | Radius (m) | | |
|------------|-----------------|-----------|-----------|---------|-----------|-----------|-----------|-----------|-----------|-----------|-----------|---------|------------|-------|------|
| | 13.3 | 17.5-17.9 | 21.7-22.7 | 26-27.7 | 30.3-32.1 | 34.8-36.5 | 39.3-41.4 | 44.2-44.8 | 48.5-49.8 | 53.9-54.1 | 58.1-58.8 | 63-63.8 | | 68.0 | |
| 3.0 | 151 600 | 137 400 | 121 900 | 102 100 | | | | | | | | | | 3.0 | |
| 3.5 | 138 650 | 137 400 | 121 900 | 102 100 | | | | | | | | | | 3.5 | |
| 4.0 | 127 500 | 128 700 | 121 450 | 102 050 | | | | | | | | | | 4.0 | |
| 4.5 | 117 900 | 119 200 | 114 650 | 96 200 | 77 300 | | | | | | | | | 4.5 | |
| 5.0 | 108 900 | 110 950 | 109 450 | 95 950 | 77 300 | | | | | | | | | 5.0 | |
| 6.0 | 89 950 | 92 250 | 92 100 | 91 550 | 77 300 | 64 750 | 46 650 | | | | | | | 6.0 | |
| 7.0 | 70 250 | 73 500 | 74 450 | 74 250 | 73 350 | 64 750 | 46 650 | | | | | | | 7.0 | |
| 8.0 | 55 950 | 58 950 | 60 050 | 60 100 | 59 450 | 58 300 | 54 100 | 38 350 | 31 850 | | | | | 8.0 | |
| 9.0 | 44 000 | 47 450 | 48 850 | 49 300 | 49 150 | 48 450 | 46 650 | 38 350 | 31 850 | 25 000 | 16 050 | | | 9.0 | |
| 10.0 | 35 700 | 39 100 | 40 400 | 40 800 | 40 650 | 40 000 | 39 100 | 38 350 | 31 850 | 25 000 | 20 650 | 15 550 | | 10.0 | |
| 12.0 | | 28 100 | 29 500 | 29 900 | 30 750 | 30 500 | 29 900 | 29 000 | 29 400 | 25 000 | 20 650 | 16 650 | 13 650 | 12.0 | |
| 14.0 | | 21 050 | 22 800 | 23 500 | 23 600 | 23 450 | 23 750 | 23 250 | 22 400 | 21 700 | 20 650 | 16 650 | 13 650 | 14.0 | |
| 16.0 | | | 17 950 | 18 650 | 18 850 | 19 200 | 18 950 | 18 400 | 17 800 | 17 550 | 16 950 | 16 450 | 13 650 | 16.0 | |
| 18.0 | | | 14 500 | 15 250 | 15 700 | 15 700 | 15 750 | 15 050 | 15 450 | 14 250 | 14 650 | 14 100 | 13 600 | 18.0 | |
| 20.0 | | | 8 650 | 12 600 | 13 100 | 13 200 | 13 250 | 12 450 | 12 850 | 11 700 | 12 100 | 11 550 | 11 050 | 20.0 | |
| 22.0 | | | | 10 600 | 11 100 | 11 150 | 11 200 | 10 450 | 10 800 | 9 700 | 10 100 | 9 550 | 9 050 | 22.0 | |
| 24.0 | | | | 7 250 | 9 450 | 9 550 | 9 600 | 8 850 | 9 200 | 8 050 | 8 500 | 7 850 | 7 500 | 24.0 | |
| 26.0 | | | | | 8 100 | 8 200 | 8 250 | 7 550 | 7 900 | 6 750 | 7 200 | 6 600 | 6 100 | 26.0 | |
| 28.0 | | | | | 5 750 | 7 050 | 7 150 | 6 400 | 6 800 | 5 600 | 6 050 | 5 450 | 4 950 | 28.0 | |
| 30.0 | | | | | | 6 050 | 6 150 | 5 400 | 5 850 | 4 650 | 5 050 | 4 500 | 4 000 | 30.0 | |
| 32.0 | | | | | | | 5 200 | 5 300 | 4 550 | 5 000 | 3 800 | 4 200 | 3 650 | 3 150 | 32.0 |
| 34.0 | | | | | | | | 4 550 | 3 800 | 4 200 | 3 050 | 3 500 | 2 900 | 2 450 | 34.0 |
| 36.0 | | | | | | | | | 3 900 | 3 150 | 3 550 | 2 450 | 2 300 | 1 800 | 36.0 |
| 38.0 | | | | | | | | | | 2 550 | 3 000 | 1 850 | 2 300 | 1 750 | 38.0 |
| 40.0 | | | | | | | | | | | 2 050 | 2 450 | 1 800 | 1 250 | 40.0 |
| 42.0 | | | | | | | | | | | | 2 000 | 1 300 | | 42.0 |
| 44.0 | | | | | | | | | | | | | 1 600 | | 44.0 |

Note: Capacities depict multiple boom modes.

This information is not for crane operation. Operator must refer to the in-cab information for crane operation. Rated lifting capacities shown on fully extended outriggers do not exceed 75% of the tipping loads.

Metric Main Boom Lift Capacity Charts – Optional

| 36.3t Counterweight - Fully Extended Outriggers - 360° Rotation (All Capacities Are Listed In Kilograms) | | | | | | | | | | | | | | | |
|---|-----------------|-----------|-----------|---------|-----------|-----------|-----------|-----------|-----------|-----------|-----------|---------|------------|-------|------|
| Radius (m) | Boom Length (m) | | | | | | | | | | | | Radius (m) | | |
| | 13.3 | 17.5-17.9 | 21.7-22.7 | 26-27.7 | 30.3-32.1 | 34.8-36.5 | 39.3-41.4 | 44.2-44.8 | 48.5-49.8 | 53.9-54.1 | 58.1-58.8 | 63-63.8 | | 68.0 | |
| 3.0 | 154 450 | 137 400 | 121 900 | 102 100 | | | | | | | | | | 3.0 | |
| 3.5 | 142 050 | 137 400 | 121 900 | 102 100 | | | | | | | | | | 3.5 | |
| 4.0 | 131 000 | 131 800 | 121 450 | 102 050 | | | | | | | | | | 4.0 | |
| 4.5 | 121 200 | 122 450 | 114 650 | 96 200 | 77 300 | | | | | | | | | 4.5 | |
| 5.0 | 112 600 | 114 000 | 112 750 | 95 950 | 77 300 | | | | | | | | | 5.0 | |
| 6.0 | 98 300 | 99 900 | 98 800 | 95 950 | 77 300 | 64 750 | 46 650 | | | | | | | 6.0 | |
| 7.0 | 85 650 | 87 900 | 87 750 | 87 250 | 77 300 | 64 750 | 46 650 | | | | | | | 7.0 | |
| 8.0 | 73 950 | 76 300 | 76 200 | 75 850 | 74 400 | 64 750 | 54 100 | 38 350 | 31 850 | | | | | 8.0 | |
| 9.0 | 62 900 | 66 000 | 65 950 | 65 400 | 66 350 | 64 750 | 51 900 | 38 350 | 31 850 | 25 000 | 16 050 | | | 9.0 | |
| 10.0 | 52 850 | 55 700 | 56 600 | 56 650 | 56 100 | 55 100 | 48 200 | 38 350 | 31 850 | 25 000 | 20 650 | 15 550 | | 10.0 | |
| 12.0 | | 41 200 | 42 550 | 42 900 | 42 750 | 42 200 | 41 250 | 36 300 | 31 850 | 25 000 | 20 650 | 16 650 | 13 650 | 12.0 | |
| 14.0 | | 31 900 | 33 250 | 33 650 | 33 500 | 32 950 | 32 100 | 32 750 | 31 850 | 25 000 | 20 650 | 16 650 | 13 650 | 14.0 | |
| 16.0 | | | 26 900 | 27 350 | 27 200 | 27 300 | 27 350 | 26 500 | 25 850 | 25 000 | 20 650 | 16 650 | 13 650 | 16.0 | |
| 18.0 | | | 22 300 | 22 750 | 22 900 | 23 350 | 22 800 | 22 050 | 22 400 | 21 800 | 20 550 | 16 650 | 13 650 | 18.0 | |
| 20.0 | | | 16 250 | 19 250 | 20 000 | 19 850 | 19 300 | 19 650 | 18 900 | 18 300 | 18 350 | 16 650 | 13 650 | 20.0 | |
| 22.0 | | | | 17 050 | 17 250 | 17 100 | 17 300 | 16 900 | 16 200 | 16 150 | 16 000 | 15 550 | 13 650 | 22.0 | |
| 24.0 | | | | 13 450 | 15 050 | 14 950 | 15 250 | 14 800 | 14 100 | 14 100 | 14 450 | 13 950 | 13 500 | 24.0 | |
| 26.0 | | | | | 13 250 | 13 400 | 13 450 | 13 000 | 12 300 | 12 250 | 12 650 | 12 100 | 11 650 | 26.0 | |
| 28.0 | | | | | 10 950 | 12 050 | 11 900 | 11 450 | 10 900 | 10 750 | 11 100 | 10 550 | 10 150 | 28.0 | |
| 30.0 | | | | | | 10 750 | 10 600 | 10 150 | 10 150 | 9 450 | 9 800 | 9 250 | 8 800 | 30.0 | |
| 32.0 | | | | | | | 9 650 | 9 600 | 9 000 | 9 350 | 8 250 | 8 650 | 8 100 | 7 700 | 32.0 |
| 34.0 | | | | | | | | 8 700 | 8 000 | 8 400 | 7 350 | 7 750 | 7 200 | 6 700 | 34.0 |
| 36.0 | | | | | | | | 7 900 | 7 150 | 7 550 | 6 450 | 6 850 | 6 300 | 5 800 | 36.0 |
| 38.0 | | | | | | | | 4 550 | 6 300 | 6 750 | 5 650 | 6 050 | 5 500 | 5 000 | 38.0 |
| 40.0 | | | | | | | | | 5 600 | 6 050 | 4 900 | 5 350 | 4 800 | 4 300 | 40.0 |
| 42.0 | | | | | | | | | 3 900 | 5 400 | 4 250 | 4 700 | 4 150 | 3 700 | 42.0 |
| 44.0 | | | | | | | | | | 4 800 | 3 700 | 4 100 | 3 600 | 3 150 | 44.0 |
| 46.0 | | | | | | | | | | 3 200 | 3 150 | 3 600 | 3 050 | 2 600 | 46.0 |
| 48.0 | | | | | | | | | | | 2 700 | 3 100 | 2 600 | 2 150 | 48.0 |
| 50.0 | | | | | | | | | | | 2 300 | 2 700 | 2 150 | 1 700 | 50.0 |
| 52.0 | | | | | | | | | | | | | 2 300 | 1 300 | 52.0 |
| 54.0 | | | | | | | | | | | | | 1 950 | 950 | 54.0 |
| 56.0 | | | | | | | | | | | | | 1 100 | | 56.0 |

Note: Capacities depict multiple boom modes.

This information is not for crane operation. Operator must refer to the in-cab information for crane operation. Rated lifting capacities shown on fully extended outriggers do not exceed 75% of the tipping loads.

**46.3t Counterweight - Fully Extended Outriggers - 360° Rotation
(All Capacities Are Listed In Kilograms)**

| Radius (m) | Boom Length (m) | | | | | | | | | | | | Radius (m) | |
|------------|-----------------|-----------|-----------|---------|-----------|-----------|-----------|-----------|-----------|-----------|-----------|---------|------------|------|
| | 13.3 | 17.5-17.9 | 21.7-22.7 | 26-27.7 | 30.3-32.1 | 34.8-36.5 | 39.3-41.4 | 44.2-44.8 | 48.5-49.8 | 53.9-54.1 | 58.1-58.8 | 63-63.8 | | 68.0 |
| 3.0 | 155 650 | 137 400 | 121 900 | 102 100 | | | | | | | | | | 3.0 |
| 3.5 | 143 200 | 137 400 | 121 900 | 102 100 | | | | | | | | | | 3.5 |
| 4.0 | 132 450 | 133 100 | 121 450 | 102 050 | | | | | | | | | | 4.0 |
| 4.5 | 122 800 | 123 700 | 114 650 | 96 200 | 77 300 | | | | | | | | | 4.5 |
| 5.0 | 114 150 | 115 150 | 114 250 | 95 950 | 77 300 | | | | | | | | | 5.0 |
| 6.0 | 99 700 | 101 250 | 100 150 | 95 950 | 77 300 | 64 750 | 46 650 | | | | | | | 6.0 |
| 7.0 | 88 200 | 89 850 | 88 800 | 89 300 | 77 300 | 64 750 | 46 650 | | | | | | | 7.0 |
| 8.0 | 78 150 | 80 400 | 80 300 | 79 900 | 74 400 | 64 750 | 54 100 | 38 350 | 31 850 | | | | | 8.0 |
| 9.0 | 68 500 | 70 850 | 70 800 | 70 500 | 69 650 | 64 750 | 51 900 | 38 350 | 31 850 | 25 000 | 16 050 | | | 9.0 |
| 10.0 | 60 700 | 63 050 | 63 050 | 62 800 | 63 500 | 62 700 | 48 200 | 38 350 | 31 850 | 25 000 | 20 650 | 15 550 | | 10.0 |
| 12.0 | | 47 400 | 48 300 | 48 300 | 47 800 | 48 150 | 46 650 | 36 300 | 31 850 | 25 000 | 20 650 | 16 650 | 13 650 | 12.0 |
| 14.0 | | 37 250 | 38 500 | 38 700 | 38 850 | 38 300 | 37 400 | 33 350 | 31 850 | 25 000 | 20 650 | 16 650 | 13 650 | 14.0 |
| 16.0 | | | 31 350 | 31 800 | 31 650 | 31 200 | 30 350 | 30 800 | 28 800 | 25 000 | 20 650 | 16 650 | 13 650 | 16.0 |
| 18.0 | | | 26 100 | 26 550 | 26 500 | 26 000 | 26 600 | 25 800 | 25 150 | 23 800 | 20 550 | 16 650 | 13 650 | 18.0 |
| 20.0 | | | 19 650 | 22 650 | 22 600 | 23 200 | 22 700 | 21 950 | 21 500 | 21 700 | 18 850 | 16 650 | 13 650 | 20.0 |
| 22.0 | | | | 19 500 | 19 550 | 20 100 | 19 600 | 18 900 | 19 200 | 18 650 | 17 500 | 16 650 | 13 650 | 22.0 |
| 24.0 | | | | 16 150 | 17 750 | 17 600 | 17 150 | 17 450 | 16 750 | 16 150 | 16 150 | 15 700 | 13 650 | 24.0 |
| 26.0 | | | | | 15 750 | 15 600 | 15 150 | 15 450 | 14 800 | 14 350 | 14 250 | 14 600 | 13 650 | 26.0 |
| 28.0 | | | | | 13 250 | 13 850 | 14 000 | 13 750 | 13 100 | 13 050 | 12 850 | 12 900 | 12 450 | 28.0 |
| 30.0 | | | | | | 12 400 | 12 700 | 12 300 | 11 650 | 11 600 | 11 950 | 11 450 | 11 000 | 30.0 |
| 32.0 | | | | | | | 11 150 | 11 450 | 11 000 | 10 400 | 10 350 | 10 700 | 9 800 | 32.0 |
| 34.0 | | | | | | | | 10 350 | 9 950 | 9 300 | 9 300 | 9 600 | 8 650 | 34.0 |
| 36.0 | | | | | | | | 9 400 | 8 950 | 8 250 | 8 250 | 8 650 | 7 650 | 36.0 |
| 38.0 | | | | | | | | 6 400 | 8 100 | 7 700 | 7 450 | 7 750 | 6 900 | 38.0 |
| 40.0 | | | | | | | | | 7 350 | 7 200 | 6 650 | 7 050 | 6 100 | 40.0 |
| 42.0 | | | | | | | | | 5 550 | 6 750 | 5 900 | 6 300 | 5 350 | 42.0 |
| 44.0 | | | | | | | | | | 6 350 | 5 250 | 5 650 | 4 700 | 44.0 |
| 46.0 | | | | | | | | | | 4 700 | 4 700 | 5 100 | 4 150 | 46.0 |
| 48.0 | | | | | | | | | | | 4 150 | 4 550 | 3 600 | 48.0 |
| 50.0 | | | | | | | | | | | 3 700 | 4 050 | 3 100 | 50.0 |
| 52.0 | | | | | | | | | | | | 3 600 | 2 650 | 52.0 |
| 54.0 | | | | | | | | | | | | 3 200 | 2 250 | 54.0 |
| 56.0 | | | | | | | | | | | | 1 950 | 1 850 | 56.0 |
| 58.0 | | | | | | | | | | | | | 1 500 | 58.0 |
| 60.0 | | | | | | | | | | | | | 1 200 | 60.0 |

Note: Capacities depict multiple boom modes.

This information is not for crane operation. Operator must refer to the in-cab information for crane operation. Rated lifting capacities shown on fully extended outriggers do not exceed 75% of the tipping loads.

| 71.0t Counterweight - Fully Extended Outriggers - 360° Rotation (All Capacities Are Listed In Kilograms) | | | | | | | | | | | | | | | |
|---|-----------------|-----------|-----------|---------|-----------|-----------|-----------|-----------|-----------|-----------|-----------|---------|------------|--------|------|
| Radius (m) | Boom Length (m) | | | | | | | | | | | | Radius (m) | | |
| | 13.3 | 17.5-17.9 | 21.7-22.7 | 26-27.7 | 30.3-32.1 | 34.8-36.5 | 39.3-41.4 | 44.2-44.8 | 48.5-49.8 | 53.9-54.1 | 58.1-58.8 | 63-63.8 | | 68.0 | |
| 2.5 | 250 000* | | | | | | | | | | | | | 2.5 | |
| 3.0 | 230 000* | 137 400 | 121 900 | 102 100 | | | | | | | | | | 3.0 | |
| 3.5 | 146 000 | 137 400 | 121 900 | 102 100 | | | | | | | | | | 3.5 | |
| 4.0 | 135 100 | 135 550 | 121 450 | 102 050 | | | | | | | | | | 4.0 | |
| 4.5 | 125 600 | 126 300 | 114 650 | 96 200 | 77 300 | | | | | | | | | 4.5 | |
| 5.0 | 117 200 | 118 050 | 114 650 | 95 950 | 77 300 | | | | | | | | | 5.0 | |
| 6.0 | 103 050 | 104 100 | 103 300 | 95 950 | 77 300 | 64 750 | 46 650 | | | | | | | 6.0 | |
| 7.0 | 91 250 | 92 750 | 91 800 | 92 250 | 77 300 | 64 750 | 46 650 | | | | | | | 7.0 | |
| 8.0 | 81 600 | 83 350 | 82 300 | 82 800 | 74 400 | 64 750 | 54 100 | 38 350 | 31 850 | | | | | 8.0 | |
| 9.0 | 73 550 | 75 400 | 74 650 | 75 000 | 72 300 | 64 750 | 51 900 | 38 350 | 31 850 | 25 000 | 16 050 | | | 9.0 | |
| 10.0 | 66 800 | 68 700 | 68 650 | 68 350 | 67 650 | 64 750 | 48 200 | 38 350 | 31 850 | 25 000 | 20 650 | 15 550 | | 10.0 | |
| 12.0 | | 58 000 | 57 950 | 57 700 | 57 050 | 57 650 | 46 650 | 36 300 | 31 850 | 25 000 | 20 650 | 16 650 | 13 650 | 12.0 | |
| 14.0 | | 48 750 | 48 750 | 48 500 | 49 400 | 48 600 | 46 150 | 33 350 | 31 850 | 25 000 | 20 650 | 16 650 | 13 650 | 14.0 | |
| 16.0 | | | 41 650 | 40 650 | 41 350 | 40 550 | 41 250 | 30 800 | 28 800 | 25 000 | 20 650 | 16 650 | 13 650 | 16.0 | |
| 18.0 | | | 34 950 | 35 100 | 34 700 | 35 450 | 34 650 | 28 600 | 26 150 | 23 800 | 20 550 | 16 650 | 13 650 | 18.0 | |
| 20.0 | | | 28 050 | 30 050 | 29 750 | 30 450 | 29 700 | 26 650 | 23 800 | 22 300 | 18 850 | 16 650 | 13 650 | 20.0 | |
| 22.0 | | | | 26 850 | 26 900 | 26 500 | 25 700 | 25 000 | 21 800 | 20 650 | 17 500 | 16 650 | 13 650 | 22.0 | |
| 24.0 | | | | 22 900 | 23 700 | 23 300 | 22 600 | 23 150 | 20 050 | 19 000 | 16 300 | 16 050 | 13 650 | 24.0 | |
| 26.0 | | | | | 21 050 | 20 650 | 20 800 | 20 550 | 18 550 | 17 600 | 15 250 | 14 850 | 13 650 | 26.0 | |
| 28.0 | | | | | 18 900 | 18 450 | 19 000 | 18 350 | 17 150 | 16 350 | 14 300 | 13 700 | 13 650 | 28.0 | |
| 30.0 | | | | | | 17 000 | 17 150 | 16 450 | 15 900 | 15 200 | 13 400 | 12 850 | 12 750 | 30.0 | |
| 32.0 | | | | | | | 15 250 | 15 550 | 14 900 | 14 900 | 14 150 | 12 650 | 12 100 | 11 850 | 32.0 |
| 34.0 | | | | | | | | 14 150 | 13 500 | 13 850 | 13 250 | 11 900 | 11 400 | 11 000 | 34.0 |
| 36.0 | | | | | | | | 12 950 | 12 300 | 12 600 | 12 100 | 11 250 | 10 750 | 10 250 | 36.0 |
| 38.0 | | | | | | | | 9 300 | 11 700 | 11 500 | 11 000 | 10 550 | 10 150 | 9 600 | 38.0 |
| 40.0 | | | | | | | | | 11 200 | 10 550 | 10 050 | 9 900 | 9 600 | 8 950 | 40.0 |
| 42.0 | | | | | | | | | 7 900 | 9 700 | 9 100 | 9 150 | 9 050 | 8 350 | 42.0 |
| 44.0 | | | | | | | | | | 8 850 | 8 250 | 8 300 | 8 600 | 7 800 | 44.0 |
| 46.0 | | | | | | | | | | 8 150 | 7 600 | 7 650 | 7 950 | 7 350 | 46.0 |
| 48.0 | | | | | | | | | | | 7 000 | 7 000 | 7 350 | 6 850 | 48.0 |
| 50.0 | | | | | | | | | | | 6 600 | 6 600 | 6 700 | 6 300 | 50.0 |
| 52.0 | | | | | | | | | | | | 6 250 | 6 150 | 5 700 | 52.0 |
| 54.0 | | | | | | | | | | | | | 5 900 | 5 150 | 54.0 |
| 56.0 | | | | | | | | | | | | | 4 750 | 4 700 | 56.0 |
| 58.0 | | | | | | | | | | | | | | 4 250 | 58.0 |
| 60.0 | | | | | | | | | | | | | | 3 800 | 60.0 |
| 62.0 | | | | | | | | | | | | | | 3 450 | 62.0 |

Note: Capacities depict multiple boom modes.
 * Over rear intermediate outriggers additional equipment required.

This information is not for crane operation. Operator must refer to the in-cab information for crane operation. Rated lifting capacities shown on fully extended outriggers do not exceed 75% of the tipping loads.

Metric Manual & Hydraulic Offset Fly Attachment Lift Capacity Charts – Optional

16.3t Counterweight - Fully Extended Outriggers - 360° Rotation (All Capacities Are Listed In Kilograms)

Main Boom + 3.6m Offset Fly (Manual Offsets 2°, 15°, 30°, 45° & Hydraulic Offsets 2° - 45°)

| Radius (m) | Boom Length (m) | | | | | | | | | | | | Radius (m) | |
|------------|-----------------|--------|--------|--------|--------|-----------|-----------|-----------|-----------|-----------|-----------|---------|------------|------|
| | 13.3 | 17.5 | 21.7 | 26.2 | 30.3 | 34.8-35.1 | 39.3-39.4 | 44.2-44.4 | 48.5-49.2 | 53.9-54.1 | 58.1-58.8 | 63-63.8 | | 68.0 |
| 3.0 | 31 600 | 31 550 | 31 500 | 31 450 | | | | | | | | | | 3.0 |
| 3.5 | 31 600 | 31 550 | 31 500 | 31 450 | | | | | | | | | | 3.5 |
| 4.0 | 31 600 | 31 550 | 31 500 | 31 450 | | | | | | | | | | 4.0 |
| 4.5 | 31 600 | 31 550 | 31 500 | 31 450 | 31 450 | 26 500 | 19 950 | | | | | | | 4.5 |
| 5.0 | 31 600 | 31 550 | 31 500 | 31 450 | 31 450 | 26 500 | 19 950 | | | | | | | 5.0 |
| 6.0 | 31 600 | 31 550 | 31 500 | 31 450 | 31 450 | 26 500 | 22 750 | 23 650 | 15 300 | | | | | 6.0 |
| 7.0 | 31 600 | 31 550 | 31 500 | 31 450 | 30 350 | 26 500 | 22 750 | 23 650 | 15 300 | | | | | 7.0 |
| 8.0 | 31 600 | 31 550 | 31 500 | 31 450 | 28 150 | 26 500 | 22 750 | 23 650 | 24 300 | 21 200 | 16 650 | | | 8.0 |
| 9.0 | 30 800 | 31 550 | 29 850 | 29 350 | 26 050 | 26 500 | 22 750 | 23 650 | 24 300 | 21 200 | 16 550 | 14 450 | | 9.0 |
| 10.0 | 29 700 | 31 550 | 27 950 | 27 400 | 24 200 | 26 100 | 22 750 | 23 650 | 24 300 | 21 200 | 16 450 | 14 250 | 11 700 | 10.0 |
| 12.0 | 26 650 | 29 050 | 23 950 | 24 000 | 21 200 | 22 900 | 22 750 | 23 650 | 24 300 | 21 200 | 16 450 | 14 250 | 11 650 | 12.0 |
| 14.0 | | 22 100 | 20 850 | 21 250 | 18 900 | 20 300 | 21 750 | 22 850 | 21 950 | 21 200 | 16 450 | 14 250 | 11 650 | 14.0 |
| 16.0 | | 17 350 | 18 250 | 18 400 | 16 900 | 18 400 | 18 600 | 18 000 | 17 150 | 16 950 | 16 400 | 14 250 | 11 650 | 16.0 |
| 18.0 | | 14 100 | 14 900 | 15 000 | 15 250 | 15 500 | 15 450 | 14 650 | 15 000 | 13 800 | 13 750 | 13 250 | 11 650 | 18.0 |
| 20.0 | | | 12 350 | 12 450 | 12 950 | 12 900 | 12 850 | 12 050 | 12 400 | 11 250 | 11 550 | 11 000 | 10 500 | 20.0 |
| 22.0 | | | 10 400 | 10 450 | 10 900 | 10 900 | 10 850 | 10 050 | 10 350 | 9 200 | 9 550 | 8 950 | 8 400 | 22.0 |
| 24.0 | | | | 8 850 | 9 300 | 9 250 | 9 200 | 8 400 | 8 750 | 7 650 | 7 900 | 7 400 | 6 850 | 24.0 |
| 26.0 | | | | 7 550 | 8 000 | 7 950 | 7 900 | 7 100 | 7 450 | 6 250 | 6 600 | 6 000 | 5 500 | 26.0 |
| 28.0 | | | | | 6 900 | 6 800 | 6 800 | 5 950 | 6 300 | 5 100 | 5 450 | 4 850 | 4 350 | 28.0 |
| 30.0 | | | | | 5 900 | 5 850 | 5 800 | 4 950 | 5 300 | 4 100 | 4 500 | 3 900 | 3 400 | 30.0 |
| 32.0 | | | | | | 5 000 | 4 950 | 4 150 | 4 450 | 3 300 | 3 650 | 3 050 | 2 550 | 32.0 |
| 34.0 | | | | | | | 4 300 | 4 250 | 3 400 | 2 550 | 2 900 | 2 350 | 1 850 | 34.0 |
| 36.0 | | | | | | | | 3 600 | 2 800 | 1 950 | 2 300 | 1 700 | 1 200 | 36.0 |
| 38.0 | | | | | | | | 3 050 | 2 250 | 1 400 | 1 750 | 1 150 | | 38.0 |
| 40.0 | | | | | | | | 2 350 | 1 750 | 2 050 | 1 250 | | | 40.0 |
| 42.0 | | | | | | | | | 1 300 | 1 600 | | | | 42.0 |
| 44.0 | | | | | | | | | | 1 200 | | | | 44.0 |

Note: Capacities depict multiple boom modes.

This information is not for crane operation. Operator must refer to the in-cab information for crane operation. Rated lifting capacities shown on fully extended outriggers do not exceed 75% of the tipping loads.

| 71.0t Counterweight - Fully Extended Outriggers - 360° Rotation (All Capacities Are Listed In Kilograms) | | | | | | | | | | | | | | |
|---|-----------------|--------|--------|--------|--------|-----------|-----------|-----------|-----------|-----------|-----------|---------|--------|------------|
| Main Boom + 3.6m Offset Fly (Manual Offsets 2°, 15°, 30°, 45° & Hydraulic Offsets 2° - 45°) | | | | | | | | | | | | | | |
| Radius (m) | Boom Length (m) | | | | | | | | | | | | | Radius (m) |
| | 13.3 | 17.5 | 21.7 | 26.2 | 30.3 | 34.8-35.1 | 39.3-39.4 | 44.2-44.4 | 48.5-49.2 | 53.9-54.1 | 58.1-58.8 | 63-63.8 | 68.0 | |
| 3.0 | 31 600 | 31 550 | 31 500 | 31 450 | | | | | | | | | | 3.0 |
| 3.5 | 31 600 | 31 550 | 31 500 | 31 450 | | | | | | | | | | 3.5 |
| 4.0 | 31 600 | 31 550 | 31 500 | 31 450 | | | | | | | | | | 4.0 |
| 4.5 | 31 600 | 31 550 | 31 500 | 31 450 | 31 450 | 26 500 | 19 950 | | | | | | | 4.5 |
| 5.0 | 31 600 | 31 550 | 31 500 | 31 450 | 31 450 | 26 500 | 19 950 | | | | | | | 5.0 |
| 6.0 | 31 600 | 31 550 | 31 500 | 31 450 | 31 450 | 26 500 | 22 750 | 23 650 | 15 300 | | | | | 6.0 |
| 7.0 | 31 600 | 31 550 | 31 500 | 31 450 | 30 350 | 26 500 | 22 750 | 23 650 | 15 300 | | | | | 7.0 |
| 8.0 | 31 600 | 31 550 | 31 500 | 31 450 | 28 150 | 26 500 | 22 750 | 23 650 | 24 300 | 21 200 | 16 650 | | | 8.0 |
| 9.0 | 30 800 | 31 550 | 29 850 | 29 350 | 26 050 | 26 500 | 22 750 | 23 650 | 24 300 | 21 200 | 16 550 | 14 450 | 11 700 | 9.0 |
| 10.0 | 29 700 | 31 550 | 27 950 | 27 400 | 24 200 | 26 100 | 22 750 | 23 650 | 24 300 | 21 200 | 16 450 | 14 250 | 11 650 | 10.0 |
| 12.0 | 26 650 | 30 400 | 23 950 | 24 000 | 21 200 | 22 900 | 22 750 | 23 650 | 24 300 | 21 200 | 16 450 | 14 250 | 11 650 | 12.0 |
| 14.0 | | 28 050 | 20 850 | 21 250 | 18 900 | 20 300 | 21 750 | 23 050 | 24 050 | 21 200 | 16 450 | 14 250 | 11 650 | 14.0 |
| 16.0 | | 26 200 | 18 700 | 19 050 | 16 900 | 18 400 | 19 700 | 21 000 | 22 050 | 21 200 | 16 450 | 14 250 | 11 650 | 16.0 |
| 18.0 | | 24 650 | 16 700 | 17 350 | 15 250 | 16 700 | 18 050 | 19 300 | 20 350 | 21 050 | 16 450 | 14 250 | 11 650 | 18.0 |
| 20.0 | | | 15 100 | 15 750 | 13 850 | 15 250 | 16 600 | 17 800 | 18 850 | 19 600 | 16 450 | 14 250 | 11 650 | 20.0 |
| 22.0 | | | 13 750 | 14 300 | 12 700 | 14 050 | 15 350 | 16 550 | 17 550 | 18 250 | 16 250 | 14 250 | 11 650 | 22.0 |
| 24.0 | | | | 13 050 | 11 650 | 13 000 | 14 250 | 15 400 | 16 400 | 17 150 | 15 050 | 14 250 | 11 650 | 24.0 |
| 26.0 | | | | 12 000 | 10 750 | 12 050 | 13 250 | 14 400 | 15 400 | 16 150 | 14 050 | 14 050 | 11 650 | 26.0 |
| 28.0 | | | | | 10 000 | 11 200 | 12 400 | 13 500 | 14 500 | 15 250 | 13 100 | 12 950 | 11 650 | 28.0 |
| 30.0 | | | | | 9 350 | 10 450 | 11 650 | 12 700 | 13 700 | 14 350 | 12 250 | 11 950 | 11 650 | 30.0 |
| 32.0 | | | | | | 9 750 | 10 950 | 12 000 | 12 950 | 13 300 | 11 450 | 11 050 | 11 050 | 32.0 |
| 34.0 | | | | | | 9 200 | 10 300 | 11 350 | 12 250 | 12 400 | 10 750 | 10 300 | 10 250 | 34.0 |
| 36.0 | | | | | | | 9 700 | 10 750 | 11 650 | 11 550 | 10 100 | 9 650 | 9 500 | 36.0 |
| 38.0 | | | | | | | 9 200 | 10 200 | 11 100 | 10 600 | 9 550 | 9 050 | 8 850 | 38.0 |
| 40.0 | | | | | | | 5 650 | 9 700 | 10 200 | 9 600 | 8 900 | 8 550 | 8 200 | 40.0 |
| 42.0 | | | | | | | | 9 200 | 9 350 | 8 700 | 8 400 | 8 050 | 7 650 | 42.0 |
| 44.0 | | | | | | | | 8 800 | 8 500 | 7 900 | 7 850 | 7 600 | 7 100 | 44.0 |
| 46.0 | | | | | | | | | 7 800 | 7 200 | 7 200 | 7 200 | 6 600 | 46.0 |
| 48.0 | | | | | | | | | 4 850 | 6 550 | 6 500 | 6 800 | 6 150 | 48.0 |
| 50.0 | | | | | | | | | | 5 950 | 5 900 | 6 250 | 5 700 | 50.0 |
| 52.0 | | | | | | | | | | 5 500 | 5 450 | 5 650 | 5 200 | 52.0 |
| 54.0 | | | | | | | | | | 5 150 | 5 100 | 5 150 | 4 650 | 54.0 |
| 56.0 | | | | | | | | | | | 4 800 | 4 650 | 4 200 | 56.0 |
| 58.0 | | | | | | | | | | | | 4 200 | 3 750 | 58.0 |
| 60.0 | | | | | | | | | | | | 3 800 | 3 350 | 60.0 |
| 62.0 | | | | | | | | | | | | 2 650 | 2 950 | 62.0 |
| 64.0 | | | | | | | | | | | | | 2 600 | 64.0 |
| 66.0 | | | | | | | | | | | | | 2 300 | 66.0 |

Note: Capacities depict multiple boom modes.

This information is not for crane operation. Operator must refer to the in-cab information for crane operation. Rated lifting capacities shown on fully extended outriggers do not exceed 75% of the tipping loads.

Metric Manual Offset Fly Attachment Lift Capacity Charts – Optional

16.3t Counterweight - Fully Extended Outriggers - 360° Rotation
(All Capacities Are Listed In Kilograms)

68m Main Boom Length

| Radius (m) | 12.2m Manual Offset Fly | | | | 20.4m Manual Offset Fly | | | | Radius (m) |
|---------------|-------------------------|-------|-------|-------|-------------------------|-------|-------|-------|---------------|
| | 2° | 15° | 30° | 45° | 2° | 15° | 30° | 45° | |
| 14 | 6 750 | | | | | | | | 14 |
| 16 | 6 750 | | | | 4 550 | | | | 16 |
| 18 | 6 750 | 6 700 | | | 4 550 | | | | 18 |
| 20 | 6 750 | 6 700 | 6 600 | | 4 550 | | | | 20 |
| 22 | 6 750 | 6 700 | 6 600 | 6 450 | 4 550 | 4 550 | | | 22 |
| 24 | 6 750 | 6 700 | 6 600 | 6 450 | 4 550 | 4 550 | | | 24 |
| 26 | 6 050 | 6 700 | 6 600 | 6 450 | 4 550 | 4 550 | 4 450 | | 26 |
| 28 | 4 900 | 5 500 | 6 150 | 6 450 | 4 550 | 4 550 | 4 450 | | 28 |
| 30 | 3 900 | 4 500 | 5 050 | 5 500 | 4 350 | 4 550 | 4 450 | 4 350 | 30 |
| 32 | 3 050 | 3 600 | 4 100 | 4 500 | 3 500 | 4 400 | 4 450 | 4 350 | 32 |
| 34 | 2 350 | 2 800 | 3 300 | 3 650 | 2 750 | 3 600 | 4 450 | 4 350 | 34 |
| 36 | 1 700 | 2 150 | 2 550 | 2 900 | 2 100 | 2 850 | 3 650 | 4 300 | 36 |
| 38 | 1 150 | 1 550 | 1 950 | 2 250 | 1 550 | 2 250 | 3 000 | 3 550 | 38 |
| 40 | | 1 000 | 1 350 | 1 650 | 1 000 | 1 700 | 2 350 | 2 900 | 40 |
| 42 | | | | 1 100 | | 1 200 | 1 800 | 2 300 | 42 |
| 44 | | | | | | | 1 300 | 1 750 | 44 |
| 46 | | | | | | | | 1 250 | 46 |

This information is not for crane operation. Operator must refer to the in-cab information for crane operation. Rated lifting capacities shown on fully extended outriggers do not exceed 75% of the tipping loads.

| 71.0t Counterweight - Fully Extended Outriggers - 360° Rotation (All Capacities Are Listed In Kilograms) | | | | | | | | | |
|---|-------------------------|-------|-------|-------|-------------------------|-------|-------|-------|---------------|
| 68m Main Boom Length | | | | | | | | | |
| Radius (m) | 12.2m Manual Offset Fly | | | | 20.4m Manual Offset Fly | | | | Radius (m) |
| | 2° | 15° | 30° | 45° | 2° | 15° | 30° | 45° | |
| 14 | 6 750 | | | | | | | | 14 |
| 16 | 6 750 | | | | 4 550 | | | | 16 |
| 18 | 6 750 | 6 700 | | | 4 550 | | | | 18 |
| 20 | 6 750 | 6 700 | 6 600 | | 4 550 | | | | 20 |
| 22 | 6 750 | 6 700 | 6 600 | 6 450 | 4 550 | 4 550 | | | 22 |
| 24 | 6 750 | 6 700 | 6 600 | 6 450 | 4 550 | 4 550 | | | 24 |
| 26 | 6 750 | 6 700 | 6 600 | 6 450 | 4 550 | 4 550 | 4 450 | | 26 |
| 28 | 6 750 | 6 700 | 6 600 | 6 450 | 4 550 | 4 550 | 4 450 | | 28 |
| 30 | 6 750 | 6 700 | 6 600 | 6 450 | 4 550 | 4 550 | 4 450 | 4 350 | 30 |
| 32 | 6 750 | 6 700 | 6 600 | 6 450 | 4 550 | 4 550 | 4 450 | 4 350 | 32 |
| 34 | 6 750 | 6 700 | 6 600 | 6 450 | 4 550 | 4 550 | 4 450 | 4 350 | 34 |
| 36 | 6 750 | 6 700 | 6 600 | 6 450 | 4 550 | 4 550 | 4 450 | 4 350 | 36 |
| 38 | 6 750 | 6 700 | 6 600 | 6 450 | 4 550 | 4 550 | 4 450 | 4 350 | 38 |
| 40 | 6 750 | 6 700 | 6 600 | 6 450 | 4 550 | 4 550 | 4 450 | 4 250 | 40 |
| 42 | 6 750 | 6 700 | 6 600 | 6 450 | 4 550 | 4 550 | 4 450 | 4 200 | 42 |
| 44 | 6 750 | 6 700 | 6 600 | 6 450 | 4 550 | 4 550 | 4 450 | 4 100 | 44 |
| 46 | 6 400 | 6 550 | 6 600 | 6 450 | 4 550 | 4 550 | 4 450 | 4 050 | 46 |
| 48 | 5 950 | 6 100 | 6 200 | 6 300 | 4 550 | 4 550 | 4 400 | 4 000 | 48 |
| 50 | 5 550 | 5 650 | 5 800 | 5 850 | 4 550 | 4 550 | 4 300 | 3 950 | 50 |
| 52 | 5 150 | 5 250 | 5 400 | 5 450 | 4 550 | 4 550 | 4 200 | 3 900 | 52 |
| 54 | 4 800 | 4 900 | 5 000 | 5 050 | 4 550 | 4 550 | 4 150 | 3 850 | 54 |
| 56 | 4 450 | 4 550 | 4 650 | 4 700 | 4 400 | 4 550 | 4 100 | 3 800 | 56 |
| 58 | 4 100 | 4 200 | 4 300 | 4 350 | 4 100 | 4 300 | 4 000 | 3 800 | 58 |
| 60 | 3 700 | 3 850 | 4 000 | 4 000 | 3 800 | 3 950 | 3 950 | 3 750 | 60 |
| 62 | 3 300 | 3 450 | 3 550 | 3 600 | 3 500 | 3 700 | 3 850 | 3 700 | 62 |
| 64 | 2 950 | 3 050 | 3 200 | 3 200 | 3 250 | 3 400 | 3 550 | 3 650 | 64 |
| 66 | 2 600 | 2 700 | 2 800 | | 2 900 | 3 150 | 3 300 | 3 350 | 66 |
| 68 | 2 300 | 2 400 | 2 450 | | 2 600 | 2 800 | 3 000 | 3 050 | 68 |
| 70 | 2 000 | 2 100 | 2 150 | | 2 300 | 2 500 | 2 700 | 2 750 | 70 |
| 72 | 1 700 | 1 800 | 1 800 | | 2 000 | 2 200 | 2 350 | 2 400 | 72 |
| 74 | 1 450 | 1 500 | | | 1 750 | 1 900 | 2 050 | 2 050 | 74 |
| 76 | | | | | 1 500 | 1 650 | 1 750 | | 76 |
| 78 | | | | | 1 250 | 1 400 | 1 450 | | 78 |
| 80 | | | | | 1 050 | 1 150 | 1 200 | | 80 |

This information is not for crane operation. Operator must refer to the in-cab information for crane operation. Rated lifting capacities shown on fully extended outriggers do not exceed 75% of the tipping loads.

**71.0t Counterweight - Fully Extended Outriggers - 360° Rotation
(All Capacities Are Listed In Kilograms)**

| 68m Main Boom Length | | | | | | | | | |
|----------------------|-----------------------|-------|-------|-------|-------------------------|-------|-------|-------|------------|
| Radius (m) | 28m Manual Offset Fly | | | | 35.7m Manual Offset Fly | | | | Radius (m) |
| | 2° | 15° | 30° | 45° | 2° | 15° | 30° | 45° | |
| 20 | 3 200 | | | | | | | | 20 |
| 22 | 3 200 | 3 150 | | | 2 400 | | | | 22 |
| 24 | 3 200 | 3 150 | | | 2 400 | | | | 24 |
| 26 | 3 200 | 3 150 | | | 2 400 | 2 400 | | | 26 |
| 28 | 3 200 | 3 150 | | | 2 400 | 2 400 | | | 28 |
| 30 | 3 200 | 3 150 | 3 050 | | 2 400 | 2 400 | | | 30 |
| 32 | 3 200 | 3 150 | 3 050 | 2 950 | 2 400 | 2 400 | 2 300 | | 32 |
| 34 | 3 200 | 3 150 | 3 050 | 2 950 | 2 400 | 2 400 | 2 300 | | 34 |
| 36 | 3 200 | 3 150 | 3 050 | 2 950 | 2 400 | 2 400 | 2 300 | 2 200 | 36 |
| 38 | 3 200 | 3 150 | 3 050 | 2 950 | 2 400 | 2 400 | 2 300 | 2 200 | 38 |
| 40 | 3 200 | 3 150 | 3 050 | 2 950 | 2 400 | 2 400 | 2 300 | 2 200 | 40 |
| 42 | 3 200 | 3 150 | 3 050 | 2 950 | 2 400 | 2 400 | 2 300 | 2 200 | 42 |
| 44 | 3 200 | 3 150 | 3 050 | 2 950 | 2 400 | 2 400 | 2 300 | 2 200 | 44 |
| 46 | 3 200 | 3 150 | 3 050 | 2 950 | 2 400 | 2 400 | 2 300 | 2 200 | 46 |
| 48 | 3 200 | 3 150 | 3 050 | 2 950 | 2 400 | 2 400 | 2,300 | 2 200 | 48 |
| 50 | 3 200 | 3 150 | 3 050 | 2 950 | 2 400 | 2 400 | 2 300 | 2 200 | 50 |
| 52 | 3 200 | 3 150 | 3 050 | 2 950 | 2 400 | 2 400 | 2 300 | 2 200 | 52 |
| 54 | 3 200 | 3 150 | 3 050 | 2 950 | 2 400 | 2 400 | 2 300 | 2 200 | 54 |
| 56 | 3 200 | 3 150 | 3 050 | 2 950 | 2 400 | 2 400 | 2 300 | 2 200 | 56 |
| 58 | 3 200 | 3 150 | 3 050 | 2 950 | 2 400 | 2 400 | 2 300 | 2 200 | 58 |
| 60 | 3 200 | 3 150 | 3 050 | 2 950 | 2 400 | 2 400 | 2 250 | 2 150 | 60 |
| 62 | 3 200 | 3 150 | 3 050 | 2 950 | 2 400 | 2 350 | 2 150 | 2 100 | 62 |
| 64 | 2 950 | 3 150 | 3 050 | 2 950 | 2 400 | 2 250 | 2 100 | 2 000 | 64 |
| 66 | 2 700 | 2 850 | 2 950 | 2 850 | 2 300 | 2 150 | 2 000 | 1 950 | 66 |
| 68 | 2 450 | 2 650 | 2 800 | 2 800 | 2 150 | 2 050 | 1 900 | 1 850 | 68 |
| 70 | 2 250 | 2 400 | 2 550 | 2 600 | 1 950 | 1 950 | 1 850 | 1 800 | 70 |
| 72 | 1 950 | 2 200 | 2 300 | 2 350 | 1 750 | 1 850 | 1 750 | 1 750 | 72 |
| 74 | 1 700 | 1 900 | 2 100 | 2 150 | 1 550 | 1 700 | 1 700 | 1 650 | 74 |
| 76 | 1 450 | 1 650 | 1 800 | 1 850 | 1 350 | 1 500 | 1 650 | 1 600 | 76 |
| 78 | 1 200 | 1 400 | 1 550 | 1 550 | 1 150 | 1 300 | 1 450 | 1 500 | 78 |
| 80 | 1 000 | 1 150 | 1 250 | 1 300 | | 1 100 | 1 250 | 1 300 | 80 |
| 82 | | | 1 000 | | | | 1 050 | 1 100 | 82 |

This information is not for crane operation. Operator must refer to the in-cab information for crane operation. Rated lifting capacities shown on fully extended outriggers do not exceed 75% of the tipping loads.

Metric Hydraulic Offset Fly Attachment Lift Capacity Charts – Optional

16.3t Counterweight - Fully Extended Outriggers - 360° Rotation
(All Capacities Are Listed In Kilograms)

68m Main Boom Length

| Radius (m) | 12.2m Hydraulic Offset Fly | | | 20.4m Hydraulic Offset Fly | | | Radius (m) |
|---------------|----------------------------|-----------|-----------|----------------------------|-----------|-----------|---------------|
| | 2° - 15° | 15° - 30° | 30° - 45° | 2° - 15° | 15° - 30° | 30° - 45° | |
| 12 | 6 700 | | | | | | 12 |
| 14 | 6 700 | | | 4 550 | | | 14 |
| 16 | 6 700 | 6 700 | | 4 550 | | | 16 |
| 18 | 6 700 | 6 700 | | 4 550 | | | 18 |
| 20 | 6 700 | 6 600 | 6 600 | 4 550 | 4 550 | | 20 |
| 22 | 6 700 | 6 600 | 6 450 | 4 550 | 4 550 | | 22 |
| 24 | 6 700 | 6 600 | 6 450 | 4 550 | 4 550 | | 24 |
| 26 | 6 050 | 6 600 | 6 450 | 4 550 | 4 450 | 4 450 | 26 |
| 28 | 4 900 | 5 500 | 6 150 | 4 550 | 4 450 | 4 450 | 28 |
| 30 | 3 900 | 4 500 | 5 050 | 4 350 | 4 450 | 4 350 | 30 |
| 32 | 3 050 | 3 600 | 4 100 | 3 500 | 4 400 | 4 350 | 32 |
| 34 | 2 350 | 2 800 | 3 300 | 2 750 | 3 600 | 4 350 | 34 |
| 36 | 1 700 | 2 150 | 2 550 | 2 100 | 2 850 | 3 650 | 36 |
| 38 | 1 150 | 1 550 | 1 950 | 1 550 | 2 250 | 3 000 | 38 |
| 40 | | 1 000 | 1 350 | 1 000 | 1 700 | 2 350 | 40 |
| 42 | | | | | 1 200 | 1 800 | 42 |
| 44 | | | | | | 1 300 | 44 |

This information is not for crane operation. Operator must refer to the in-cab information for crane operation. Rated lifting capacities shown on fully extended outriggers do not exceed 75% of the tipping loads.

71.0t Counterweight - Fully Extended Outriggers - 360° Rotation
(All Capacities Are Listed In Kilograms)

68m Main Boom Length

| Radius (m) | 12.2m Hydraulic Offset Fly | | | 20.4m Hydraulic Offset Fly | | | Radius (m) |
|---------------|----------------------------|-----------|-----------|----------------------------|-----------|-----------|---------------|
| | 2° - 15° | 15° - 30° | 30° - 45° | 2° - 15° | 15° - 30° | 30° - 45° | |
| 12 | 6 700 | | | | | | 12 |
| 14 | 6 700 | | | 4 550 | | | 14 |
| 16 | 6 700 | 6 700 | | 4 550 | | | 16 |
| 18 | 6 700 | 6 700 | | 4 550 | | | 18 |
| 20 | 6 700 | 6 600 | 6 600 | 4 550 | 4 550 | | 20 |
| 22 | 6 700 | 6 600 | 6 450 | 4 550 | 4 550 | | 22 |
| 24 | 6 700 | 6 600 | 6 450 | 4 550 | 4 550 | | 24 |
| 26 | 6 700 | 6 600 | 6 450 | 4 550 | 4 450 | 4 450 | 26 |
| 28 | 6 700 | 6 600 | 6 450 | 4 550 | 4 450 | 4 450 | 28 |
| 30 | 6 700 | 6 600 | 6 450 | 4 550 | 4 450 | 4 350 | 30 |
| 32 | 6 700 | 6 600 | 6 450 | 4 550 | 4 450 | 4 350 | 32 |
| 34 | 6 700 | 6 600 | 6 450 | 4 550 | 4 450 | 4 350 | 34 |
| 36 | 6 700 | 6 600 | 6 450 | 4 550 | 4 450 | 4 350 | 36 |
| 38 | 6 700 | 6 600 | 6 450 | 4 550 | 4 450 | 4 350 | 38 |
| 40 | 6 700 | 6 600 | 6 450 | 4 550 | 4 450 | 4 250 | 40 |
| 42 | 6 700 | 6 600 | 6 450 | 4 550 | 4 450 | 4 200 | 42 |
| 44 | 6 700 | 6 600 | 6 450 | 4 550 | 4 450 | 4 100 | 44 |
| 46 | 6 400 | 6 550 | 6 450 | 4 550 | 4 450 | 4 050 | 46 |
| 48 | 5 950 | 6 100 | 6 200 | 4 550 | 4 400 | 4 000 | 48 |
| 50 | 5 550 | 5 650 | 5 800 | 4 550 | 4 300 | 3 950 | 50 |
| 52 | 5 150 | 5 250 | 5 400 | 4 550 | 4 200 | 3 900 | 52 |
| 54 | 4 800 | 4 900 | 5 000 | 4 550 | 4 150 | 3 850 | 54 |
| 56 | 4 450 | 4 550 | 4 650 | 4 400 | 4 100 | 3 800 | 56 |
| 58 | 4 100 | 4 200 | 4 300 | 4 100 | 4 000 | 3 800 | 58 |
| 60 | 3 700 | 3 850 | 4 000 | 3 800 | 3 950 | 3 750 | 60 |
| 62 | 3 300 | 3 450 | 3 550 | 3 500 | 3 700 | 3 700 | 62 |
| 64 | 2 950 | 3 050 | 3 200 | 3 250 | 3 400 | 3 550 | 64 |
| 66 | 2 600 | 2 700 | 2 800 | 2 900 | 3 150 | 3 300 | 66 |
| 68 | 2 300 | 2 400 | 2 450 | 2 600 | 2 800 | 3 000 | 68 |
| 70 | 2 000 | 2 100 | 2 100 | 2 300 | 2 500 | 2 700 | 70 |
| 72 | 1 700 | 1 800 | 1 750 | 2 000 | 2 200 | 2 350 | 72 |
| 74 | 1 450 | 1 500 | | 1 750 | 1 900 | 2 050 | 74 |
| 76 | | | | 1 500 | 1 650 | 1 700 | 76 |
| 78 | | | | 1 250 | 1 400 | 1 400 | 78 |
| 80 | | | | 1 050 | 1 150 | 1 050 | 80 |

This information is not for crane operation. Operator must refer to the in-cab information for crane operation. Rated lifting capacities shown on fully extended outriggers do not exceed 75% of the tipping loads.

| 71.0t Counterweight - Fully Extended Outriggers - 360° Rotation (All Capacities Are Listed In Kilograms) | | | | | | | |
|---|--------------------------|-----------|-----------|----------------------------|-----------|-----------|---------------|
| 68m Main Boom Length | | | | | | | |
| Radius (m) | 28m Hydraulic Offset Fly | | | 35.7m Hydraulic Offset Fly | | | Radius (m) |
| | 2° - 15° | 15° - 30° | 30° - 45° | 2° - 15° | 15° - 30° | 30° - 45° | |
| 16 | 3 150 | | | | | | 16 |
| 18 | 3 150 | | | | | | 18 |
| 20 | 3 150 | | | 2 400 | | | 20 |
| 22 | 3 150 | 3 150 | | 2 400 | | | 22 |
| 24 | 3 150 | 3 150 | | 2 350 | 2 350 | | 24 |
| 26 | 3 150 | 3 050 | 3 050 | 2 350 | 2 350 | | 26 |
| 28 | 3 150 | 3 050 | 3 050 | 2 350 | 2 350 | | 28 |
| 30 | 3 150 | 3 050 | 3 050 | 2 350 | 2 300 | 2 300 | 30 |
| 32 | 3 150 | 3 050 | 3 050 | 2 350 | 2 300 | 2 300 | 32 |
| 34 | 3 150 | 3 050 | 3 050 | 2 350 | 2 300 | 2 300 | 34 |
| 36 | 3 150 | 3 050 | 3 050 | 2 350 | 2 300 | 2 300 | 36 |
| 38 | 3 150 | 3 050 | 3 050 | 2 350 | 2 300 | 2 300 | 38 |
| 40 | 3 150 | 3 050 | 3 050 | 2 350 | 2 300 | 2 300 | 40 |
| 42 | 3 150 | 3 050 | 3 050 | 2 350 | 2 300 | 2 300 | 42 |
| 44 | 3 150 | 3 050 | 3 050 | 2 350 | 2 300 | 2 300 | 44 |
| 46 | 3 150 | 3 050 | 3 050 | 2 350 | 2 300 | 2 300 | 46 |
| 48 | 3 150 | 3 050 | 3 050 | 2 350 | 2 300 | 2 300 | 48 |
| 50 | 3 150 | 3 050 | 3 050 | 2 350 | 2 300 | 2 300 | 50 |
| 52 | 3 150 | 3 050 | 3 050 | 2 350 | 2 300 | 2 300 | 52 |
| 54 | 3 150 | 3 050 | 3 050 | 2 350 | 2 300 | 2 300 | 54 |
| 56 | 3 150 | 3 050 | 3 050 | 2 350 | 2 300 | 2 300 | 56 |
| 58 | 3 150 | 3 050 | 3 050 | 2 350 | 2 300 | 2 250 | 58 |
| 60 | 3 150 | 3 050 | 3 050 | 2 350 | 2 250 | 2 150 | 60 |
| 62 | 3 150 | 3 050 | 3 000 | 2 350 | 2 150 | 2 100 | 62 |
| 64 | 2 950 | 3 050 | 2 950 | 2 250 | 2 100 | 2 000 | 64 |
| 66 | 2 700 | 2 850 | 2 850 | 2 150 | 2 000 | 1 950 | 66 |
| 68 | 2 450 | 2 650 | 2 800 | 2 050 | 1 900 | 1 850 | 68 |
| 70 | 2 250 | 2 400 | 2 550 | 1 950 | 1 850 | 1 800 | 70 |
| 72 | 1 950 | 2 200 | 2 300 | 1 750 | 1 750 | 1 750 | 72 |
| 74 | 1 700 | 1 900 | 2 100 | 1 550 | 1 700 | 1 650 | 74 |
| 76 | 1 450 | 1 650 | 1 800 | 1 350 | 1 500 | 1 600 | 76 |
| 78 | 1 200 | 1 400 | 1 550 | 1 150 | 1 300 | 1 450 | 78 |
| 80 | 1 000 | 1 150 | 1 250 | | 1 100 | 1 250 | 80 |
| 82 | | | 1 000 | | | 1 050 | 82 |

This information is not for crane operation. Operator must refer to the in-cab information for crane operation. Rated lifting capacities shown on fully extended outriggers do not exceed 75% of the tipping loads.

This Page Intentionally Blank

This Page Intentionally Blank

Link-Belt Construction Equipment Company Lexington, Kentucky www.linkbelt.com

®Link-Belt is a registered trademark. Copyright 2015. We are constantly improving our products and therefore reserve the right to change designs and specifications.